

## **APPENDIX K MINERAL TITLES CONSULTATION**

2 August 2017  
**Modelling Resources Pty Ltd**  
 PO Box 785  
 West Perth WA 6872

**Notification: Proposed Wellington Solar Farm**

To whom it may concern,

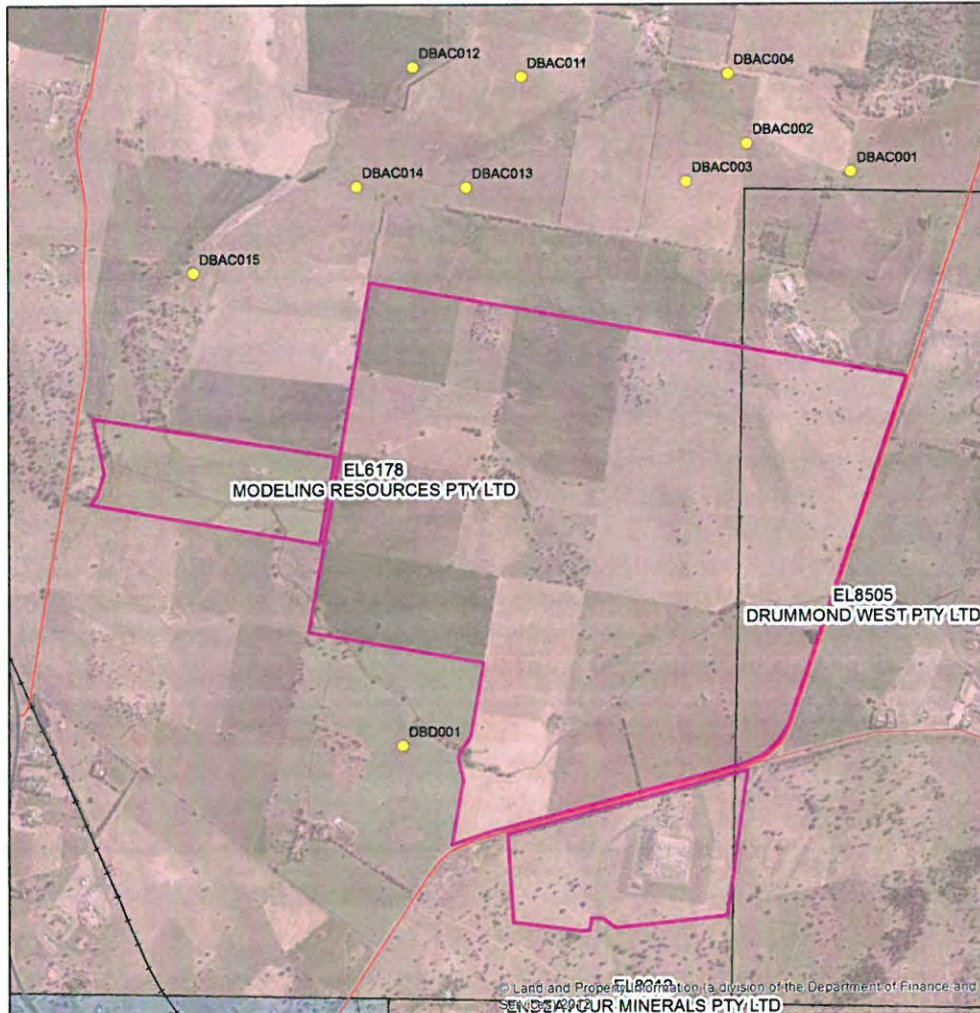
First Solar Australia is proposing to deliver the Wellington Solar Farm, a 180 megawatt (MW) capacity photovoltaic (PV) solar power project located approximately two kilometres north east of Wellington in New South Wales (NSW). The 490-hectare site selected for the Wellington Solar Farm is situated on Goolma Road and was chosen for its availability of existing transmission capacity on-site (avoiding the need to build new transmission lines), its excellent solar resource, and its predominantly clear flat land. These factors make it an ideal location for a solar power project. We understand Modelling Resources Pty Ltd have Mineral Titles (EL 6178) which include the proposed project site (Lots 89, 90, 91, 92, 99, 102, 103, 104 of DP2987, Lot 1 of DP34690, Lot 1 of DP520396 and Lot 2 of DP807187) and are writing to inform you of the project and seek your input.

The Wellington Solar Farm is currently in the initial stages of planning, and First Solar is committed to directly engaging with residents and other stakeholders to ensure they are well informed through-out the planning process and questions are addressed.

Proposed Project Timeline:

	Timing	Planning Milestones
<b>COMMUNITY CONSULTATION</b>	April 2017	Preparation of Constraints Mapping and Scoping Document
	June 2016	Application to DPE for SEARs
	August 2016	Submission of Network Connection Application
	Q3 2017	Preparation of Development Application
	September 2017	Exhibition of Environmental Impact Statement
	October 2017	Preparation of Submission Report
	December 2017	Project Approval Received
	January 2018	Construction Period Commences
	December 2018	Construction Complete
	January 2019	Commercial Operation

Proposed Project Location:



**Legend**

- Metallic & Industrial Min bores
- Proposed Wellington Solar Farm
- Minor roads
- Current Mineral Titles

© State of New South Wales through NSW Department of Planning & Environment – Division of Resources & Geoscience 2017. You must obtain permission from the Department to copy, distribute, display or store in electronic form, any part of this publication, except as permitted under the Copyright Act 1968 (Cwth).

**DISCLAIMER**

The information in these materials is protected by copyright, and is confidential until the time that Department of Planning & Environment publishes that information. The recipient is not permitted to use, disclose or reproduce the information in these materials except for land use and planning purposes. Any unauthorised use, copying or reproduction without obtaining the relevant permissions from the Department will constitute an infringement of copyright. The information contained in this publication is based on knowledge and understanding at time of writing (July 2017). The Department excludes all liability for the accuracy or completeness of the information, or for any injury, loss, or damage whatsoever (including without limitation liability for negligence and consequential losses) suffered by any person acting, or purporting to act, in reliance upon anything contained herein. Users rely on and use this information at their own risk.

Map produced by LUTA GSNSW Date Saved: 7/07/2017 8:30:04 AM

Path: G:\Geosurvey\MIN\LU\MINLU\_Landuse\LU\_ARCGIS\USERS\AH\ELMAN\Bases Map\_AH\March17.mxd



First Solar (Australia) Pty Ltd  
Level 3, 16 Spring Street,  
Sydney NSW, 2000

For more information on the Wellington Solar Farm Project or to provide comments:

**Visit:** [www.wellingtonsolarfarm.com.au](http://www.wellingtonsolarfarm.com.au)

**Call:** 02 9002 7700

**Email:** [WellingtonSolarFarm@firstsolar.com](mailto:WellingtonSolarFarm@firstsolar.com)

Due to the timing requirements of our development application we request you provide any comments on the proposal by Close Of Business August 16 2017. Please feel free to contact me via the below number if you would like to discuss or arrange a face to face meeting.

Kind regards,

Anna Cain  
Project Manager – Wellington Solar Farm  
0437263054  
First Solar (Australia) Pty Ltd.



First Solar (Australia) Pty Ltd  
Level 3, 16 Spring Street,  
Sydney NSW, 2000

2 August 2017  
**Drummond West Pty Ltd**  
26 Richardson Street  
West Perth WA 6005

### Notification: Proposed Wellington Solar Farm

To whom it may concern,

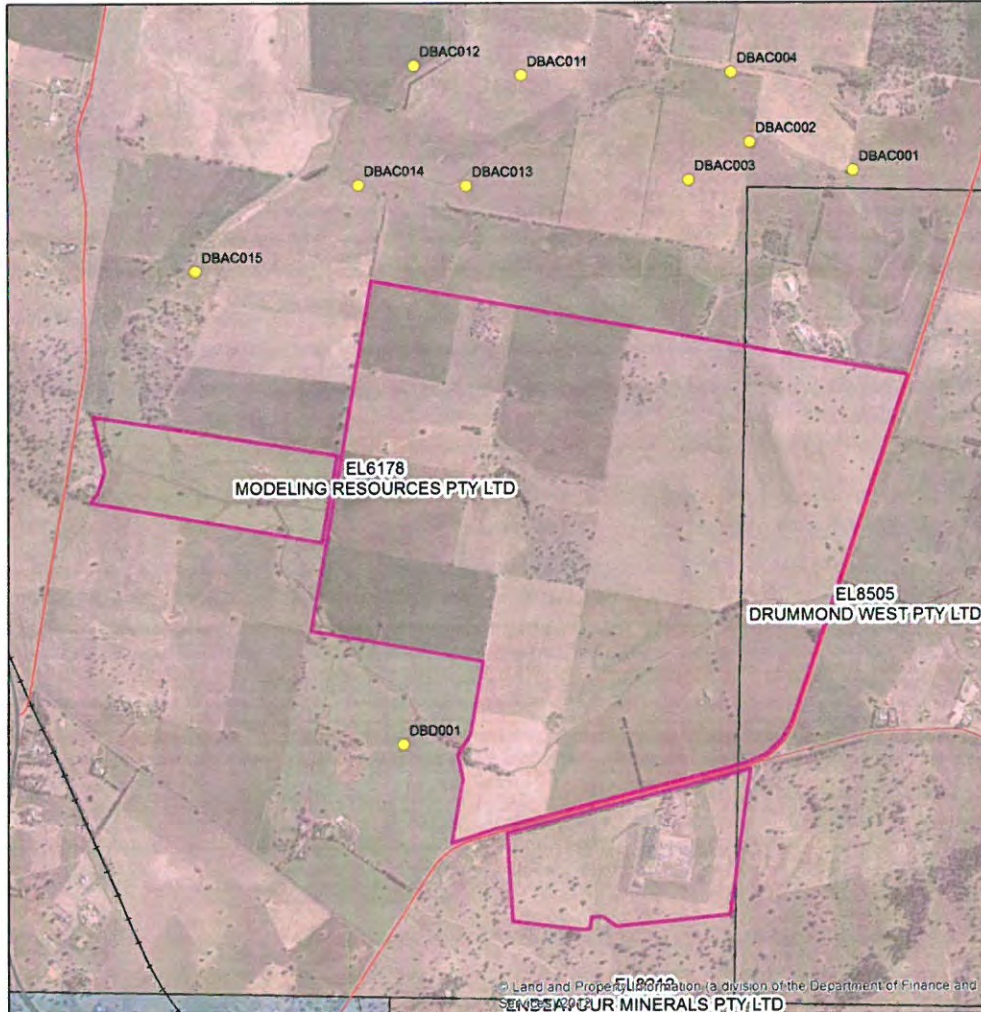
First Solar Australia is proposing to deliver the Wellington Solar Farm, a 180 megawatt (MW) capacity photovoltaic (PV) solar power project located approximately two kilometres north east of Wellington in New South Wales (NSW). The 490-hectare site selected for the Wellington Solar Farm is situated on Goolma Road and was chosen for its availability of existing transmission capacity on-site (avoiding the need to build new transmission lines), its excellent solar resource, and its predominantly clear flat land. These factors make it an ideal location for a solar power project. We understand Drummond West Pty Ltd have Mineral Titles (EL 8505) which include the proposed project site (Lots 89, 90, 91, 92, 99, 102, 103, 104 of DP2987, Lot 1 of DP34690, Lot 1 of DP520396 and Lot 2 of DP807187) and are writing to inform you of the project and seek your input.

The Wellington Solar Farm is currently in the initial stages of planning, and First Solar is committed to directly engaging with residents and other stakeholders to ensure they are well informed through-out the planning process and questions are addressed.

Proposed Project Timeline:

	Timing	Planning Milestones
COMMUNITY CONSULTATION	April 2017	Preparation of Constraints Mapping and Scoping Document
	June 2016	Application to DPE for SEARs
	August 2016	Submission of Network Connection Application
	Q3 2017	Preparation of Development Application
	September 2017	Exhibition of Environmental Impact Statement
	October 2017	Preparation of Submission Report
	December 2017	Project Approval Received
	January 2018	Construction Period Commences
	December 2018	Construction Complete
	January 2019	Commercial Operation

Proposed Project Location:



**Legend**

- Metallic & Industrial Min bores
- Proposed Wellington Solar Farm
- Minor roads
- Current Mineral Titles

© State of New South Wales through NSW Department of Planning & Environment – Division of Resources & Geoscience 2017. You must obtain permission from the Department to copy, distribute, display or store in electronic form, any part of this publication, except as permitted under the Copyright Act 1968 (Cwlth).

**DISCLAIMER**

The information in these materials is protected by copyright, and is confidential until the time that Department of Planning & Environment publishes that information. The recipient is not permitted to use, disclose or reproduce the information in these materials except for land use and planning purposes. Any unauthorised use, copying or reproduction without obtaining the relevant permissions from the Department will constitute an infringement of copyright. The information contained in this publication is based on knowledge and understanding at time of writing (July 2017). The Department excludes all liability for the accuracy or completeness of the information, or for any injury, loss, or damage whatsoever (including without limitation liability for negligence and consequential losses) suffered by any person acting, or purporting to act, in reliance upon anything contained herein. Users rely on and use this information at their own risk.

Map produced by LUTA GSNSW Date Saved: 7/07/2017 8:30:04 AM

Path: G:\Geosurvey\MINLU\MINLU\_Landuse\LU\_ARCGIS\USERS\AHELMAN\Base Map\_AHMarch17.mxd



First Solar (Australia) Pty Ltd  
Level 3, 16 Spring Street,  
Sydney NSW, 2000

For more information on the Wellington Solar Farm Project or to provide comments:

**Visit:** [www.wellingtonsolarfarm.com.au](http://www.wellingtonsolarfarm.com.au)

**Call:** 02 9002 7700

**Email:** [WellingtonSolarFarm@firstsolar.com](mailto:WellingtonSolarFarm@firstsolar.com)

Due to the timing requirements of our development application we request you provide any comments on the proposal by Close Of Business August 16 2017. Please feel free to contact me via the below number if you would like to discuss or arrange a face to face meeting.

Kind regards,

  
Anna Cain

Project Manager – Wellington Solar Farm

0437263054

First Solar (Australia) Pty Ltd.