

14 August 2019

Wellington Local Aboriginal Lands Council

Via email: wellingtonlalc@yahoo.com



canberra

unit 8, 27 yallourn st
(po box 62)
fyshwick act 2609
t 02 6280 5053

bega

89-91 auckland st
(po box 470)
bega nsw 2550
t 02 6492 8333

brisbane

suite 4, level 5
87 wickham terrace
spring hill qld 4000
t 07 3129 7633

newcastle

2/54 hudson st
hamilton nsw 2303
t 02 4929 2301

sydney

unit 18, level 3
21 mary st
surry hills nsw 2010
t 02 8202 8333

wagga wagga

suite 1, 39 fitzmaurice st
(po box 5464)
wagga wagga nsw 2650
t 02 6971 9696
f 02 6971 9693

ngh@nghenvironmental.com.au
www.nghenvironmental.com.au



To whom it may concern,

RE – Wellington Solar Farm (SSD-8573) Notice of development footprint modification

As you would be aware, you are a Registered Aboriginal Party (RAP) for the Wellington Solar Farm project that was granted State Significant Development (SSD) planning approval on the 25 May 2018 for the construction and operation of a 174 megawatt (MW) photovoltaic (pv) solar farm and associated infrastructure including access tracks, overhead transmission lines, battery storage facility, substation and transformers. The Wellington Solar Farm will be located about 2 km north-east of Wellington in the Dubbo Regional Local Government Area (LGA).

Recently NGH Environmental was informed that a modification to the development footprint is required to connect the solar farm to the existing adjacent substation. The modification will impact approximately 1.8 hectares as shown in Figure 1 with the proposed transmission line roughly following an existing fence line before connecting to the south-western side of the substation.

A desktop review was undertaken to assess and identify if the proposed modification development footprint had been previously subject to assessment and if there are any known Aboriginal sites or objects located within or in proximity to the proposed modification development footprint.

The result of that assessment is that the proposed development footprint extension has been sufficiently assessed and surveyed during the field work previously conducted for both the Wellington Solar Farm and Wellington North Solar Plant projects by NGH archaeologists with yourselves and other Aboriginal community representatives. It should be noted that the Registered Aboriginal Parties for both projects were the same and therefore we believe review of field assessment data from both projects is considered to be acceptable in this instance. During the previous surveys conducted in proximity to the substation the landforms in the proposed modification development footprint and generally surrounding the existing substation were deemed to have low archaeological sensitivity and to have been highly disturbed and modified by the construction and maintenance of the existing substation and its associated transmission lines.

The desktop assessment, combined with the review of previous field data and results, have concluded that the proposed modification development footprint has previously been adequately assessed by archaeologist with Aboriginal community representatives and does not require further field assessment. No Aboriginal objects/sites or areas of potential archaeological deposit were identified within or adjacent to the proposed modification development footprint.

The desktop review and assessment of the proposed modification concluded that the development footprint will not impact upon previously recorded Aboriginal sites or areas of potential archaeological deposit. The desktop review and assessment noted that the area was deemed during previous investigations of the area to have low archaeological sensitivity and to have been highly disturbed. Therefore, the proposed modification to the development footprint in no way alters or affects the assessment or recommendations in the Wellington Solar Farm Aboriginal Cultural Heritage Assessment Report (NGH 2018) or Cultural Heritage Management Plan (CHMP) that has been developed for the project.

This letter is provided to ensure you are informed about the proposed changes to the development footprint. Please also be advised that we propose to write a small chapter in the modification report detailing the above assessment outcome and this will be submitted to the NSW Department of Planning, Industry and Environment (DPIE) for approval of the modification. Should you have any questions or concerns regarding this update please don't hesitate to contact me.

Yours Sincerely,

A handwritten signature in black ink, appearing to read 'Kirsten Bradley', with a long horizontal flourish extending to the right.

Kirsten Bradley
Senior Heritage Consultant
NGH Environmental

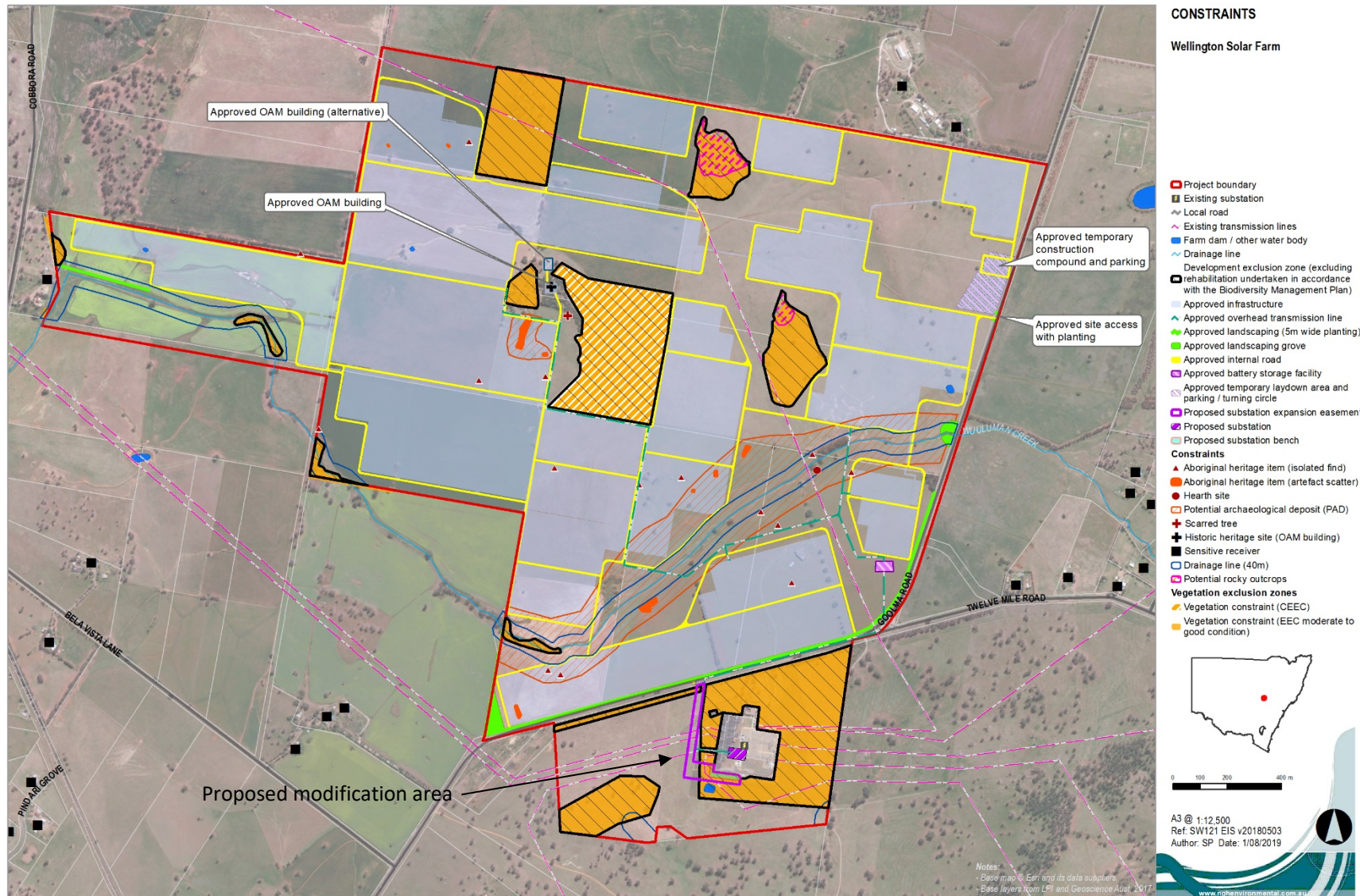


Figure 1. Proposed modification.