

APPENDIX J MODELING RESOURCES CORRESPONDENCE

Anna Cain

From: Anna Cain
Sent: Wednesday, 9 August 2017 3:29 PM
To: 'clive.atkinson@everlake.com'
Subject: Modelling Resources
Attachments: 20170802-EL6178 Notification-OUT.pdf

Hi Clive,

Thanks for your time on the phone this afternoon.

As discussed, I am looking to speak with someone from Modelling Resources about a solar farm I am developing on some land on which Modelling Resources holds a minerals license. I sent a letter last week and wish to follow up either via phone or via email to ensure that the appropriate person has had a chance to review the letter and provide comment. I've attached a copy of this letter to this email.

On the phone you indicated that Gordan Barns is the appropriate person to follow up with. Could you please forward my contact information to Gordon?

Kind regards,

Anna

Anna Cain

Manager, Project Development – BD APAC

anna.cain@firstsolar.com

First Solar (Australia) Pty Ltd, Level 3, 16 Spring Street, Sydney NSW, 2000 Australia

www.firstsolar.com | T: +61 2 9002 7713 | M: +61 437 263 054

2 August 2017
Modelling Resources Pty Ltd
PO Box 785
West Perth WA 6872

Notification: Proposed Wellington Solar Farm

To whom it may concern,

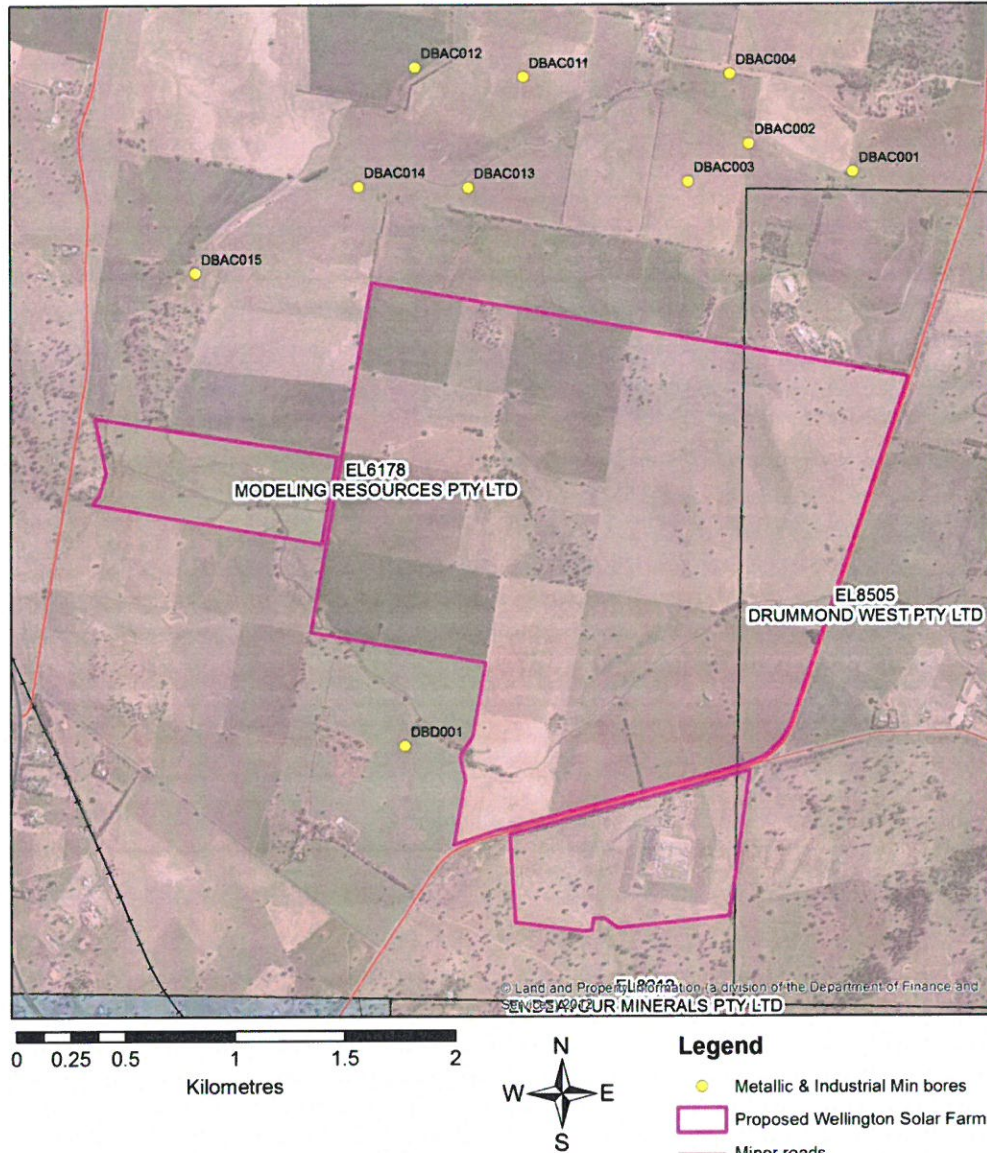
First Solar Australia is proposing to deliver the Wellington Solar Farm, a 180 megawatt (MW) capacity photovoltaic (PV) solar power project located approximately two kilometres north east of Wellington in New South Wales (NSW). The 490-hectare site selected for the Wellington Solar Farm is situated on Goolma Road and was chosen for its availability of existing transmission capacity on-site (avoiding the need to build new transmission lines), its excellent solar resource, and its predominantly clear flat land. These factors make it an ideal location for a solar power project. We understand Modelling Resources Pty Ltd have Mineral Titles (EL 6178) which include the proposed project site (Lots 89, 90, 91, 92, 99, 102, 103, 104 of DP2987, Lot 1 of DP34690, Lot 1 of DP520396 and Lot 2 of DP807187) and are writing to inform you of the project and seek your input.

The Wellington Solar Farm is currently in the initial stages of planning, and First Solar is committed to directly engaging with residents and other stakeholders to ensure they are well informed through-out the planning process and questions are addressed.

Proposed Project Timeline:

	Timing	Planning Milestones
COMMUNITY CONSULTATION	April 2017	Preparation of Constraints Mapping and Scoping Document
	June 2016	Application to DPE for SEARs
	August 2016	Submission of Network Connection Application
	Q3 2017	Preparation of Development Application
	September 2017	Exhibition of Environmental Impact Statement
	October 2017	Preparation of Submission Report
	December 2017	Project Approval Received
	January 2018	Construction Period Commences
	December 2018	Construction Complete
	January 2019	Commercial Operation

Proposed Project Location:



© State of New South Wales through NSW Department of Planning & Environment – Division of Resources & Geoscience 2017. You must obtain permission from the Department to copy, distribute, display or store in electronic form, any part of this publication, except as permitted under the Copyright Act 1968 (Cwth).

DISCLAIMER

The information in these materials is protected by copyright, and is confidential until the time that Department of Planning & Environment publishes that information. The recipient is not permitted to use, disclose or reproduce the information in these materials except for land use and planning purposes. Any unauthorised use, copying or reproduction without obtaining the relevant permissions from the Department will constitute an infringement of copyright. The information contained in this publication is based on knowledge and understanding at time of writing (July 2017). The Department excludes all liability for the accuracy or completeness of the information, or for any injury, loss, or damage whatsoever (including without limitation liability for negligence and consequential losses) suffered by any person acting, or purporting to act, in reliance upon anything contained herein. Users rely on and use this information at their own risk.

Map produced by LUTA GSNSW Date Saved: 7/07/2017 8:30:04 AM

Path: G:\Geosurvey\MIN\MINLU_Landuse\LU_ARCGIS\USERS\AH\ELMAN\Bse Map_AHMarch17.mxd



First Solar (Australia) Pty Ltd
Level 3, 16 Spring Street,
Sydney NSW, 2000

For more information on the Wellington Solar Farm Project or to provide comments:

Visit: www.wellingtonsolarfarm.com.au

Call: 02 9002 7700

Email: WellingtonSolarFarm@firstsolar.com

Due to the timing requirements of our development application we request you provide any comments on the proposal by Close Of Business August 16 2017. Please feel free to contact me via the below number if you would like to discuss or arrange a face to face meeting.

Kind regards,



Anna Cain
Project Manager – Wellington Solar Farm
0437263054
First Solar (Australia) Pty Ltd.

Anna Cain

From: Anna Cain
Sent: Monday, 14 August 2017 3:44 PM
To: 'gbarnes@modelingresources.com.au'
Cc: Wellington Solar Farm
Subject: Wellington Solar

Dear Gordon,

Thanks for your time on the phone last week to discuss my correspondence about the Wellington solar farm First Solar is developing and how affects your minerals exploration activities. I understand that Modeling Resources are doing test around the area but don't have any immediate plans to test the proposed solar farm development area, however, you might bring this forward to align with the solar farm development timeline.

To support this, First Solar will update you at key project milestones (Planning Application Submission, Grid Connection Offer to Connect, Planning Approval, etc). This notification will include an update of the project's timeline to assist you with planning your tests.

Should you have any follow up questions or input, please email wellingtonsolarfarm@firstsolar.com.

Kind regards,
Anna

Anna Cain

Manager, Project Development – BD APAC
anna.cain@firstsolar.com

First Solar (Australia) Pty Ltd, Level 3, 16 Spring Street, Sydney NSW, 2000 Australia
www.firstsolar.com | T: +61 2 9002 7713 | M: +61 437 263 054

Anna Cain

From: David Berrie <berrie@magmaticresources.com>
Sent: Tuesday, 15 August 2017 4:46 PM
To: Anna Cain
Cc: David Richardson; Gordon Barnes
Subject: Wellington Solar Farm

Dear Anna,

I refer to your letter dated 2nd August 2017 and your subsequent conversations with Gordon Barnes concerning the proposed Solar Farm.

Please note that Modeling Resources Pty. Ltd. is a wholly owned subsidiary of Magmatic Resources Limited a company listed on the ASX.

EL 6178 forms part of our Wellington North Project and we have yet to conduct any exploration on that tenement or any of our Wellington North Project. In our Prospectus we used to list on the ASX we state that we intend to carry out work on that Project and as such we have a legal obligation to do so.

We are in the process of assessing the impact that the proposed Solar Farm will have on our exploration efforts and will conduct that assessment in due course.

We note that on your proposed timeline you are preparing your Development Application which once granted will give you unfettered right to construct the Solar Farm. In those circumstances we advise that it may be necessary to lodge objections to the grant of the proposed Solar Farm as its construction will preclude exploration on the area of the Farm.

Accordingly, we reserve all our rights to make an objection and would ask that you provide us with notice of your intention to lodge your Development Application as required by the relevant legislation.

Regards

David Berrie
Non-Executive Chairman
Magmatic Resources Limited
A: Level 1, 11 Lucknow Place, West Perth WA 6005
P: PO Box 785, West Perth WA 6872
O: +61 (8) 6102 2709
M: +61 418 980 289
E: berrie@magmaticresources.com



Anna Cain

From: Anna Cain
Sent: Wednesday, 16 August 2017 10:29 AM
To: 'David Berrie'
Cc: David Richardson; Gordon Barnes
Subject: RE: Wellington Solar Farm

Hi David,

Thanks for your email and appreciate your position.

As discussed with Gordon Barnes, we will note your interest in our stakeholder register and provide updates at key project milestones and in the event of any changes to timelines. We will notify you of our intention to lodge the project's Development Application.

Kind regards,

Anna

Anna Cain
Manager, Project Development – BD APAC
M +61437263054

From: David Berrie [mailto:berrie@magmaticresources.com]
Sent: Tuesday, 15 August 2017 4:46 PM
To: Anna Cain <Anna.Cain@firstsolar.com>
Cc: David Richardson <richardson@magmaticresources.com>; Gordon Barnes <gbarnes@magmaticresources.com>
Subject: Wellington Solar Farm

Dear Anna,

I refer to your letter dated 2nd August 2017 and your subsequent conversations with Gordon Barnes concerning the proposed Solar Farm.

Please note that Modeling Resources Pty. Ltd. is a wholly owned subsidiary of Magmatic Resources Limited a company listed on the ASX.

EL 6178 forms part of our Wellington North Project and we have yet to conduct any exploration on that tenement or any of our Wellington North Project. In our Prospectus we used to list on the ASX we state that we intend to carry out work on that Project and as such we have a legal obligation to do so.

We are in the process of assessing the impact that the proposed Solar Farm will have on our exploration efforts and will conduct that assessment in due course.

We note that on your proposed timeline you are preparing your Development Application which once granted will give you unfettered right to construct the Solar Farm. In those circumstances we advise that it may be necessary to lodge objections to the grant of the proposed Solar Farm as its construction will preclude exploration on the area of the Farm.

Accordingly, we reserve all our rights to make an objection and would ask that you provide us with notice of your intention to lodge your Development Application as required by the relevant legislation.

Regards

David Berrie

Non-Executive Chairman

Magmatic Resources Limited

A: Level 1, 11 Lucknow Place, West Perth WA 6005

P: PO Box 785, West Perth WA 6872

O: +61 (8) 6102 2709

M: +61 418 980 289

E: berrie@magmaticresources.com



From: [Gordon Barnes](#)
To: [Mirjam Tome](#)
Subject: Re: Wellington Solar Farm
Date: Friday, October 20, 2017 3:21:05 PM
Attachments: [WellingtonSolarFarm.pdf](#)

Hi Mirjam

Please see attached map that shows the location of the proposed solar farm in relation to EL6178. You might be interested in reviewing the site below. It is the NSW geoscience online mapping tool where you can review minerals related activity in NSW. You can zoom into the Wellington area and load relevant layers: mineral titles, administrative boundaries, geology, geophysics etc:

<https://minview.geoscience.nsw.gov.au/>

Regards,
Gordon

On 20 October 2017 at 14:04, Mirjam Tome <Mirjam.Tome@firstsolar.com> wrote:

Hi Gordon,

Thanks for your time on the phone just now.

As discussed, I understand that the Montefiores Pit (Naima Quarry) does not have anything to do with your Exploration Licence EL 6178.

In regards to the your exploration plans for the Wellington Solar Farm site, I understand that Modeling Resources doesn't have any immediate plans to explore the site. However, you might wish to complete some preliminary testing and you are currently reviewing regional geophysical data which has been collected by previous explorers. This study will be completed in the next two weeks and will determine your decision to complete soil sampling on the site.

You also mentioned that you appreciate First Solar's early consultation regarding the proposed Wellington Solar Farm as you ran into issues with one of your other licences due to the lack of consultation from another developer of a project near Parkes.

We are committed to keep you informed of the project and its process and as mentioned during our conversation, construction of the proposed Wellington Solar Farm is anticipated

to start in Q1 2019.

I would like to overlay your exploration licence EL6178 footprint over our proposed Wellington Solar Farm to understand the impact one might have on the other. Would you be able to provide me with a map of the boundaries of your licence EL 6178.

Kind Regards,
Mirjam

Mirjam Tome

Manager, Project Development APAC

First Solar (Australia) Pty Ltd, [Level 3 16 Spring St, Sydney, NSW 2000 Australia](#)

www.firstsolar.com | p: [+61 2 9002 7713](tel:+61290027713) | m: [+61 416 802 790](tel:+61416802790) | mirjam.tome@firstsolar.com



--

Gordon Barnes

General Manager Exploration

Magmatic Resources Ltd

W: www.magmaticresources.com

A: Unit 1, 2 Gateway Crescent, Orange NSW 2800

P: PO Box 8029, Orange East NSW 2800

M: +61 419 399 414

P: +61 2 6362 0716

E: gbarnes@magmaticresources.com



From: Mirjam Tome
To: [Gordon Barnes \(gbarnes@modelingresources.com.au\)](mailto:gbarnes@modelingresources.com.au)
Subject: Wellington Solar Farm
Date: Friday, October 20, 2017 2:04:00 PM

Hi Gordon,

Thanks for your time on the phone just now.

As discussed, I understand that the Montefiores Pit (Naima Quarry) does not have anything to do with your Exploration Licence EL 6178.

In regards to the your exploration plans for the Wellington Solar Farm site, I understand that Modeling Resources doesn't have any immediate plans to explore the site. However, you might wish to complete some preliminary testing and you are currently reviewing regional geophysical data which has been collected by previous explorers. This study will be completed in the next two weeks and will determine your decision to complete soil sampling on the site.

You also mentioned that you appreciate First Solar's early consultation regarding the proposed Wellington Solar Farm as you ran into issues with one of your other licences due to the lack of consultation from another developer of a project near Parkes.

We are committed to keep you informed of the project and its process and as mentioned during our conversation, construction of the proposed Wellington Solar Farm is anticipated to start in Q1 2019.

I would like to overlay your exploration licence EL6178 footprint over our proposed Wellington Solar Farm to understand the impact one might have on the other. Would you be able to provide me with a map of the boundaries of your licence EL 6178.

Kind Regards,
Mirjam

Mirjam Tome

Manager, Project Development APAC

First Solar (Australia) Pty Ltd, Level 3 16 Spring St, Sydney, NSW 2000 Australia
www.firstsolar.com | p: +61 2 9002 7713 | m: +61 416 802 790 | mirjam.tome@firstsolar.com



From: Mirjam Tome
To: [Gordon Barnes \(gbarnes@modelingresources.com.au\)](mailto:gbarnes@modelingresources.com.au)
Subject: Wellington Solar Farm Planning Update
Date: Friday, 8 December 2017 2:13:00 PM
Attachments: [20171208_WSF_EL6178_Notification_EIS.pdf](#)

Hi Gordon,

We would like to inform you that the Development Application and Environmental Impact Statement for the proposed Wellington Solar Farm has been submitted to the Department of Planning and Environment.

Please refer to the attached letter for further information.

Kind Regards,
Mirjam

Mirjam Tome

Manager, Project Development APAC

First Solar (Australia) Pty Ltd, Level 3 16 Spring St, Sydney, NSW 2000 Australia
www.firstsolar.com | p: +61 2 9002 7713 | m: +61 416 802 790 | mirjam.tome@firstsolar.com





First Solar (Australia) Pty Ltd
Level 3, 16 Spring Street,
Sydney NSW, 2000

8 December 2017

Gordon Barnes
Modelling Resources Pty Ltd
PO Box 785
West Perth WA 6872

Planning Update: Proposed Wellington Solar Farm

Dear Gordon,

First Solar Australia would like to inform you that the Development Application for the proposed Wellington Solar Farm was submitted to the Department of Planning and Environment (DPE) on Thursday, 30th November 2017.

First Solar Australia is proposing to deliver the Wellington Solar Farm, a 174 megawatt (MW) capacity photovoltaic (PV) solar power project located approximately two kilometres north east of Wellington in New South Wales (NSW). The 490-hectare site selected for the Wellington Solar Farm is situated on Goolma Road and was chosen for its availability of existing transmission capacity on-site (avoiding the need to build new transmission lines), its excellent solar resource and its predominantly clear flat land. These factors make it an ideal location for a solar power project.

First Solar submitted an application for the Secretary's Environmental Assessment Requirements (SEARs) to the Department of Planning and Environment for the proposed Wellington Solar Farm on 20th June 2017. SEARs were issued on 21st July 2017. The Environmental Impact Statement (EIS) has now been prepared. Following the public exhibition of the EIS, the Department of Planning will determine the development approval. Pending approval, construction would commence mid next year.

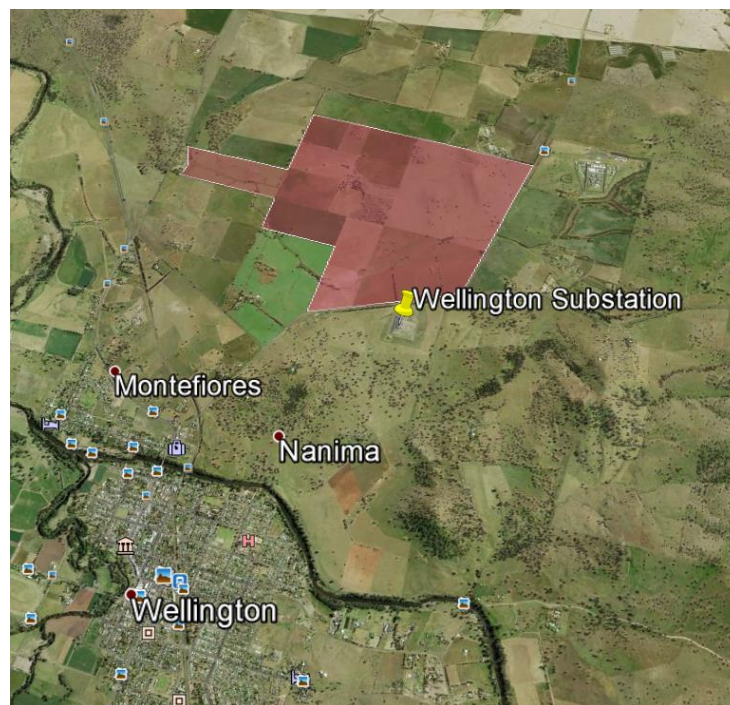
The development application and EIS is available to view on the Department of Planning and Environment's website and will be on public exhibition from 14th December 2017. Please access this information using the link below:

http://majorprojects.planning.nsw.gov.au/index.pl?action=view_job&job_id=8573

Submissions on the Wellington Solar Farm can be submitted to the Department of Planning and Environment directly. Information on providing a submission is available from the below link:

<https://www.planningportal.nsw.gov.au/understanding-planning/major-projects>

Proposed Project Location (shaded in pink):



Proposed Project Timeline:

COMMUNITY CONSULTATION	Timing	Planning Milestones
	Nov 2017	Development Application submitted to DPE
	Dec 2017	Exhibition of Environmental Impact Statement
	Feb 2018	Preparation of Submission Report by DPE
	Mar 2018	Project Approval Received
	Jul 2018	Estimated Construction Period Commences
	Jul 2019	Estimated Construction Complete
	Jul 2019	Estimated Commercial Operation



First Solar (Australia) Pty Ltd
Level 3, 16 Spring Street,
Sydney NSW, 2000

For more information on the proposed Wellington Solar Farm or to provide comments on the proposal and to register for regular updates please:

Call: 02 9002 7713

Email: WellingtonSolarFarm@firstsolar.com

Website: www.wellingtonsolarfarm.com.au

Kind regards,

Mirjam Tome
Project Development Manager