

APPENDIX K DRUMMOND WEST CORRESPONDENCE



First Solar (Australia) Pty Ltd
Level 3, 16 Spring Street,
Sydney NSW, 2000

2 August 2017
Drummond West Pty Ltd
26 Richardson Street
West Perth WA 6005

Notification: Proposed Wellington Solar Farm

To whom it may concern,

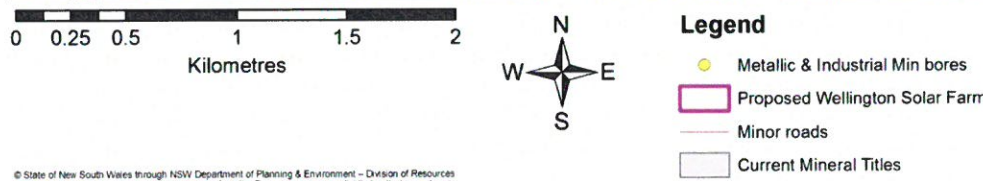
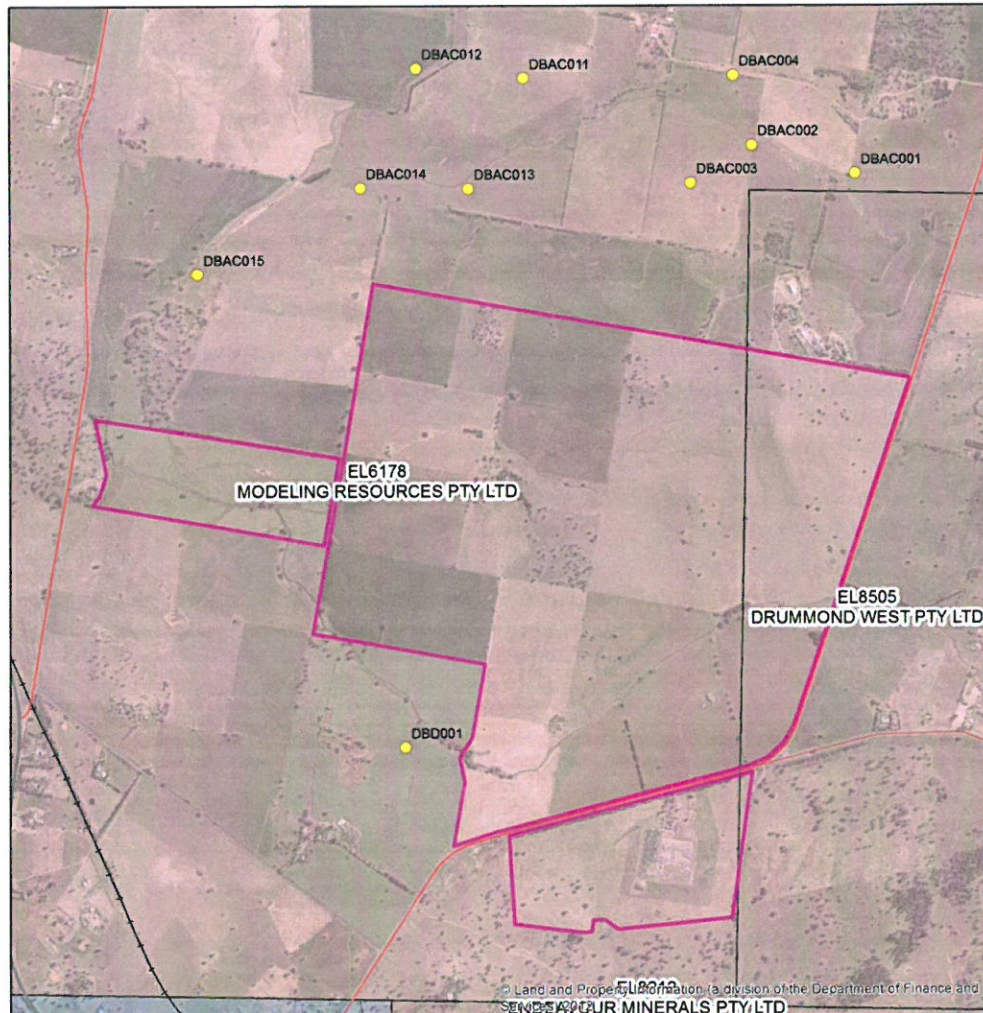
First Solar Australia is proposing to deliver the Wellington Solar Farm, a 180 megawatt (MW) capacity photovoltaic (PV) solar power project located approximately two kilometres north east of Wellington in New South Wales (NSW). The 490-hectare site selected for the Wellington Solar Farm is situated on Goolma Road and was chosen for its availability of existing transmission capacity on-site (avoiding the need to build new transmission lines), its excellent solar resource, and its predominantly clear flat land. These factors make it an ideal location for a solar power project. We understand Drummond West Pty Ltd have Mineral Titles (EL 8505) which include the proposed project site (Lots 89, 90, 91, 92, 99, 102, 103, 104 of DP2987, Lot 1 of DP34690, Lot 1 of DP520396 and Lot 2 of DP807187) and are writing to inform you of the project and seek your input.

The Wellington Solar Farm is currently in the initial stages of planning, and First Solar is committed to directly engaging with residents and other stakeholders to ensure they are well informed through-out the planning process and questions are addressed.

Proposed Project Timeline:

	Timing	Planning Milestones
COMMUNITY CONSULTATION	April 2017	Preparation of Constraints Mapping and Scoping Document
	June 2016	Application to DPE for SEARs
	August 2016	Submission of Network Connection Application
	Q3 2017	Preparation of Development Application
	September 2017	Exhibition of Environmental Impact Statement
	October 2017	Preparation of Submission Report
	December 2017	Project Approval Received
	January 2018	Construction Period Commences
	December 2018	Construction Complete
	January 2019	Commercial Operation

Proposed Project Location:



© State of New South Wales through NSW Department of Planning & Environment – Division of Resources & Geoscience 2017. You must obtain permission from the Department to copy, distribute, display or store in electronic form, any part of this publication, except as permitted under the Copyright Act 1968 (Cwlth).

DISCLAIMER
 The information in these materials is protected by copyright, and is confidential until the time that Department of Planning & Environment publishes that information. The recipient is not permitted to use, disclose or reproduce the information in these materials except for land use and planning purposes. Any unauthorised use, copying or reproduction without obtaining the relevant permissions from the Department will constitute an infringement of copyright. The information contained in this publication is based on knowledge and understanding at time of writing (July 2017). The Department excludes all liability for the accuracy or completeness of the information, or for any injury, loss, or damage whatsoever (including without limitation liability for negligence and consequential losses) suffered by any person acting, or purporting to act, in reliance upon anything contained herein. Users rely on and use this information at their own risk.

Map produced by LUTA GSNSW Date Saved: 7/07/2017 8:30:04 AM
 Path: G:\Geosurvey\MINLUMINLU_Landuse\LU_ARCGIS\USERS\AHELMAN\Base Map_AHMarch17.mxd





First Solar (Australia) Pty Ltd
Level 3, 16 Spring Street,
Sydney NSW, 2000

For more information on the Wellington Solar Farm Project or to provide comments:


Visit: www.wellingtonsolarfarm.com.au

Call: 02 9002 7700

Email: WellingtonSolarFarm@firstsolar.com

Due to the timing requirements of our development application we request you provide any comments on the proposal by Close Of Business August 16 2017. Please feel free to contact me via the below number if you would like to discuss or arrange a face to face meeting.

Kind regards,


Anna Cain
Project Manager – Wellington Solar Farm
0437263054
First Solar (Australia) Pty Ltd.

Anna Cain

From: Anna Cain
Sent: Wednesday, 9 August 2017 3:42 PM
To: 'ernas@impactminerals.com.au'
Subject: Drummond West
Attachments: 20170802-EL8505 Notification-OUT.pdf

Hi Erna,

Thanks for your time on the phone this afternoon. As discussed, I am looking to speak with Dr Mike Jones. Eden Hodson from UTM Global, the Titles Agent for Drummond West passed on your number as the best way to contact him. I sent a letter last week and wish to follow up either via phone or via email to ensure that the appropriate person has had a chance to review the letter and provide comment. I've attached a copy of this letter to this email.

I look forward to hearing from Dr Jones or an appropriate person in due course.

Kind regards,

Anna

Anna Cain

Manager, Project Development – BD APAC
anna.cain@firstsolar.com

First Solar (Australia) Pty Ltd, Level 3, 16 Spring Street, Sydney NSW, 2000 Australia
www.firstsolar.com | T: +61 2 9002 7713 | M: +61 437 263 054

Anna Cain

From: Mike Jones <MikeJ@impactminerals.com.au>
Sent: Tuesday, 15 August 2017 2:25 PM
To: Anna Cain
Subject: Impact Minerals

Anna

Thanks for the email.

I left a message this morning for you. Lets talk when we can!

Best regards

Mike

Dr Mike Jones
Managing Director

impact.
MINERALS

26/28 Richardson Street West Perth

P +61 8 6454 6666

M 0427471548

E mikej@impactminerals.com.au

W www.impactminerals.com.au



Anna Cain

From: Mike Jones <MikeJ@impactminerals.com.au>
Sent: Wednesday, 23 August 2017 4:21 PM
To: Anna Cain
Cc: Leo Horn
Subject: Re: Impact Minerals and the Solar Farm at Wellington
Attachments: image001.png; image002.png

Anna

Thanks for the email. We shall stay in touch.

Best regards

Mike

Dr Mike Jones

Managing Director

impact.
MINERALS

26/28 Richardson Street West Perth
P +61 8 6454 6666

M 0427471548

E mikej@impactminerals.com.au

W www.impactminerals.com.au



From: Anna Cain <Anna.Cain@firstsolar.com>
Date: Wednesday, 23 August 2017 at 2:11 pm
To: Mike Jones <mikej@impactminerals.com.au>
Subject: RE: Impact Minerals

Dear Mike,

Thanks for your time on the phone in the last two weeks to discuss my correspondence about the Wellington solar farm First Solar is developing and how affects your minerals exploration activities. I understand that your company are doing test around the area but don't have any immediate plans to test the proposed solar farm development area, however, you might bring this forward to align with the solar farm development timeline.

To support this, First Solar will update you at key project milestones (Planning Application Submission, Grid Connection Offer to Connect, Planning Approval, etc). This notification will include an update of the project's timeline to assist you with planning your tests.

Should you have any follow up questions or input, please email wellingtonsolarfarm@firstsolar.com.

Kind regards,
Anna

Anna Cain

Manager, Project Development – BD APAC
M +61437263054

From: Mike Jones [<mailto:MikeJ@impactminerals.com.au>]
Sent: Tuesday, 15 August 2017 2:25 PM
To: Anna Cain <Anna.Cain@firstsolar.com>
Subject: Impact Minerals

Anna

Thanks for the email.

I left a message this morning for you. Lets talk when we can!

Best regards

Mike
Dr Mike Jones
Managing Director

impact.
MINERALS

26/28 Richardson Street West Perth
P +61 8 6454 6666
M 0427471548
E mikej@impactminerals.com.au
W www.impactminerals.com.au



Anna Cain

From: Anna Cain
Sent: Wednesday, 23 August 2017 4:12 PM
To: 'Mike Jones'
Subject: RE: Impact Minerals

Dear Mike,

Thanks for your time on the phone in the last two weeks to discuss my correspondence about the Wellington solar farm First Solar is developing and how affects your minerals exploration activities. I understand that your company are doing test around the area but don't have any immediate plans to test the proposed solar farm development area, however, you might bring this forward to align with the solar farm development timeline.

To support this, First Solar will update you at key project milestones (Planning Application Submission, Grid Connection Offer to Connect, Planning Approval, etc). This notification will include an update of the project's timeline to assist you with planning your tests.

Should you have any follow up questions or input, please email wellingtonsolarfarm@firstsolar.com.

Kind regards,
Anna

Anna Cain
Manager, Project Development – BD APAC
M +61437263054

From: Mike Jones [mailto:MikeJ@impactminerals.com.au]
Sent: Tuesday, 15 August 2017 2:25 PM
To: Anna Cain <Anna.Cain@firstsolar.com>
Subject: Impact Minerals

Anna

Thanks for the email.

I left a message this morning for you. Lets talk when we can!

Best regards

Mike
Dr Mike Jones
Managing Director

impact.
MINERALS

26/28 Richardson Street West Perth
P +61 8 6454 6666
M 0427471548
E mikej@impactminerals.com.au
W www.impactminerals.com.au

MEMBER



**GOLD
INDUSTRY
GROUP**

From: Mirjam Tome
To: ["mikej@impactminerals.com.au"](mailto:mikej@impactminerals.com.au)
Subject: Wellington Solar Farm Planning Update
Date: Friday, 8 December 2017 2:16:00 PM
Attachments: [20171208_Wellington Solar Farm-EL8505 Notification EIS.pdf](#)

Hi Mike,

We would like to inform you that the Development Application and Environmental Impact Statement for the proposed Wellington Solar Farm has been submitted to the Department of Planning and Environment.

Please refer to the attached letter for further information.

Kind Regards,
Mirjam

Mirjam Tome

Manager, Project Development APAC

First Solar (Australia) Pty Ltd, Level 3 16 Spring St, Sydney, NSW 2000 Australia
www.firstsolar.com | p: +61 2 9002 7713 | m: +61 416 802 790 | mirjam.tome@firstsolar.com





First Solar (Australia) Pty Ltd
Level 3, 16 Spring Street,
Sydney NSW, 2000

8 December 2017

Mike Jones
Impact Minerals
26/28 Richardson Street
West Perth WA 6005

Planning Update: Proposed Wellington Solar Farm

Dear Mike,

First Solar Australia would like to inform you that the Development Application for the proposed Wellington Solar Farm was submitted to the Department of Planning and Environment (DPE) on Thursday, 30th November 2017.

First Solar Australia is proposing to deliver the Wellington Solar Farm, a 174 megawatt (MW) capacity photovoltaic (PV) solar power project located approximately two kilometres north east of Wellington in New South Wales (NSW). The 490-hectare site selected for the Wellington Solar Farm is situated on Goolma Road and was chosen for its availability of existing transmission capacity on-site (avoiding the need to build new transmission lines), its excellent solar resource and its predominantly clear flat land. These factors make it an ideal location for a solar power project.

First Solar submitted an application for the Secretary's Environmental Assessment Requirements (SEARs) to the Department of Planning and Environment for the proposed Wellington Solar Farm on 20th June 2017. SEARs were issued on 21st July 2017. The Environmental Impact Statement (EIS) has now been prepared. Following the public exhibition of the EIS, the Department of Planning will determine the development approval. Pending approval, construction would commence mid next year.

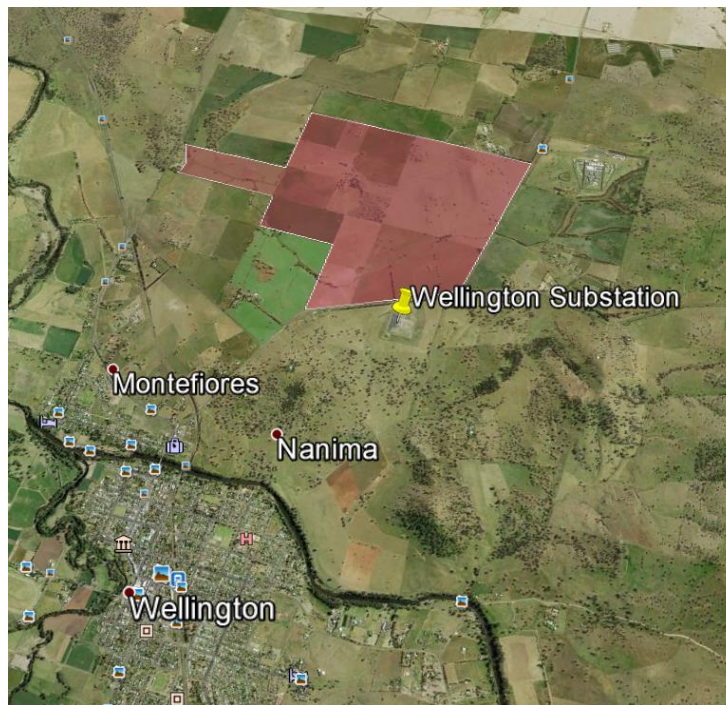
The development application and EIS is available to view on the Department of Planning and Environment's website and will be on public exhibition from 14th December 2017. Please access this information using the link below:

http://majorprojects.planning.nsw.gov.au/index.pl?action=view_job&job_id=8573

Submissions on the Wellington Solar Farm can be submitted to the Department of Planning and Environment directly. Information on providing a submission is available from the below link:

<https://www.planningportal.nsw.gov.au/understanding-planning/major-projects>

Proposed Project Location (shaded in pink):



Proposed Project Timeline:

	Timing	Planning Milestones
COMMUNITY CONSULTATION	Nov 2017	Development Application submitted to DPE
	Dec 2017	Exhibition of Environmental Impact Statement
	Feb 2018	Preparation of Submission Report by DPE
	Mar 2018	Project Approval Received
	Jul 2018	Estimated Construction Period Commences
	Jul 2019	Estimated Construction Complete
	Jul 2019	Estimated Commercial Operation



First Solar (Australia) Pty Ltd
Level 3, 16 Spring Street,
Sydney NSW, 2000

For more information on the proposed Wellington Solar Farm or to provide comments on the proposal and to register for regular updates please:

Call: 02 9002 7713

Email: WellingtonSolarFarm@firstsolar.com

Website: www.wellingtonsolarfarm.com.au

Kind regards,

A handwritten signature in blue ink, appearing to read "Mirjam Tome".

Mirjam Tome
Project Development Manager