

WHO ARE WE?



Lightsource BP is a global market leader in the funding, development and long-term management of large-scale solar projects and smart energy solutions. We work closely with local businesses and communities to supply clean, dependable and competitively priced energy. We're dedicated to securing a low-carbon future, and to meeting the dual challenge of an increased demand for energy alongside a need to reduce emissions, in the UK and worldwide.

COMMUNITY ENGAGEMENT

It's important to us that the local community are fully informed of the plans for the site, and have the opportunity to comment and learn about the proposal. We will be holding an information event to provide details about our project ideas at this stage, and we welcome your feedback.

The information event will be held on:

Thursday, 1st August 2019, at:

Ystradowen Community Centre
38 New Rd, Cwmllynfell,
Swansea, SA9 2YY

Drop in any time between 3.30pm and 6.00pm



FIND OUT MORE

If you have queries in relation to this project, please contact the project team by calling **0333 200 0755**, or emailing info@lightsourcebp.com, quoting "Bryn Henllys Extension".



t 0333 200 0755
e info@lightsourcebp.com
www.lightsourcebp.com

COMMUNITY INFORMATION PACK

PROPOSED BRYN HENLLYS EXTENSION SOLAR FARM NEAR THE VILLAGE OF CWM-TWRCH UCHAF, SWANSEA








STATISTICS

Lightsource BP is working on a proposal for a solar farm near the village of Cwm-twrch Uchaf, Swansea. We will fund and operate the proposed solar farm, which will connect into the local electricity network, and have an output power capacity of 9.9MW (Megawatts).

This proposal is an extension of a consented 20MW development on land at Bryn Henllys Open Cast Mine, which was approved by the planning committee in June 2018, but has not yet been built. We're now working with the land owner to bring both sites to completion, and we're undertaking a wide range of environmental assessments to help shape our plans. These include landscape and visual, heritage and archaeology, ecology and ornithology, hydrology and more.

A key part of developing plans for the new solar farm is engaging with local communities, so we're holding an information event to display our plans and gather feedback. Members of the Lightsource BP team will be on hand to answer any questions about the new proposal from local residents and interested parties.

-  **8,840 MWh** (Megawatts hours) supplied per year
-  Equivalent to the energy needs of **2,679** households
-  **65** acres of land
-  **3,372** tonnes of carbon emissions saved
-  Equivalent to taking over **717** cars off the road

Get involved!

COMMUNITY INFORMATION EVENT

Thursday, 1st August 2019, at:

Ystradowen Community Centre
38 New Rd, Cwmllynfell,
Swansea, SA9 2YY

Drop in any time between 3.30pm and 6.00pm.
If you are unable to attend and wish to discuss the project further, please contact us on **0333 200 0755**.



t 0333 200 0755
e info@lightsourcebp.com
www.lightsourcebp.com

OUR INITIAL THOUGHTS

Proposed Bryn Henllys Extension solar farm near the village of Cwm-twrch Uchaf, Swansea

We're still developing this proposal, and our plans will evolve based on local input and the results of our ecological, landscape and heritage assessments. These are our current thoughts. For further details, please join us at our community info event on Thursday 1st August. Drop in between 3.30pm and 6.00pm.

Opencast Works

Evidence suggests that opencast working operations shown present across the majority of the site ceased in 2003 and restoration of the site followed. We are currently awaiting a pre-application response and further information from the Coal Authority.

Agricultural Land Grading

We have conducted an Agricultural Land Classification Survey which has classified the fields as Grade 4, which is lower grade land with severe limitations that significantly restrict the range of crops and potential yields.

Boosting Biodiversity

As passive installations, solar farms offer a great opportunity to include habitat enhancement measures into the proposal. A bespoke Biodiversity Management Plan will be developed to guide the enhancement of existing habitats and creation of new habitats to support local wildlife. As part of this initiative, our planting, seeding and habitat creation plans will focus on native species and will aim at providing favourable habitat conditions for a range of species, including amphibians, small mammals and invertebrates.

Increasing Biodiversity

We are keen to hear from and work with any local beekeepers and land management organisations to support wildlife and boost the habitats local to the proposed installation.

Green Open Spaces

The installation has been designed to leave wide spaces around the site boundaries and between the row of panels to avoid shading the panels, which will leave the majority of the fenced solar array area as uncovered grassland.

Access ★

Proposed construction and operational access will be from minor road Palleg Road, located to the east of the Site, which is the approved access to the adjacent Bryn Henllys consented solar farm site.

Continued Agricultural Use

The site is currently used for sheep grazing. Our proposal includes plans to create a meadow grassland which can be grazed by sheep, so the land under the solar farm will maintain an agricultural purpose.



Existing Vegetation

While developing the layout we have maintained the existing boundary vegetation onsite.



New Vegetation Planting

We will submit a detailed planting plan as part of the planning application, which will focus on bolstering the existing vegetation which already screens the installation from the surrounding area, and increasing the biodiversity values on the site via varied planting.



Brecon Beacons National Park

Waunlwyd Farm

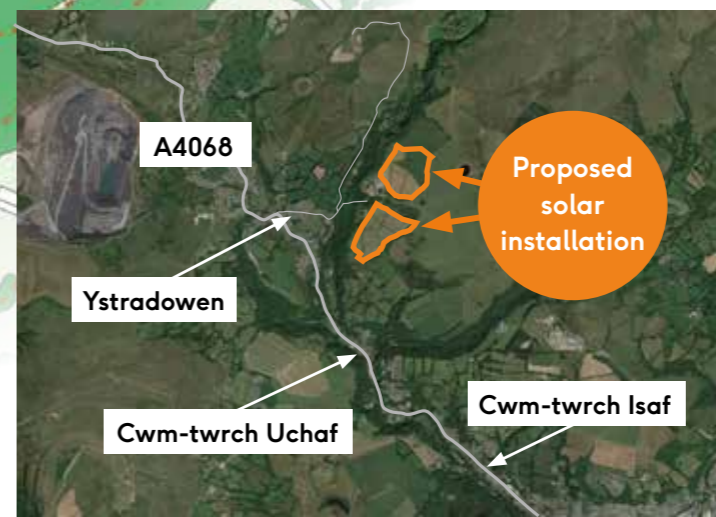
Ystradowen

A4068

Consented Site

Footpath [- - -]

Byway [- -]



FAQS

Why is this project important?

Solar is a passive form of technology, generating electricity without creating any waste products or pollutants. This makes it an ideal energy source for the UK, as the 2020 targets for renewable energy and carbon emission reductions approach.

How will the equipment be protected?

The solar installation will be enclosed by a timber and wire agricultural fence about 2 metres in height, and CCTV cameras will monitor the boundary fence and area within the solar farm. These will be specifically positioned to make sure they do not impinge on the privacy of residents.

How are the panels kept clean?

Generally, rainfall helps to keep the panels free of dust and dirt. Several times a year, the panels will be thoroughly cleaned using specialist equipment, to make sure the installation is in the best possible condition.

Do solar installations pose a health risk?

No - solar is a passive technology which doesn't produce any harmful by-products. All electrical equipment we use meets the Electromagnetic Compatibility (EMC) Directive and are CE marked.

Will the solar installation cause traffic disruption?

Once the solar installation is in place it requires very little maintenance and approximately monthly visits in regular cars or 4x4s would cause no traffic disruption. Whilst the solar installation is being constructed, a traffic management plan will be put in place.