

Wellington North Solar Farm – Heritage Management Plan

FINAL

June 2022

Prepared by Umwelt (Australia) Pty Limited on behalf of Lightsource bp Renewable Energy Investments Limited



WELLINGTON NORTH SOLAR FARM

Heritage Management Plan

FINAL

Prepared by

Umwelt (Australia) Pty Limited

on behalf of

Lightsource bp Renewable Energy Investments
Limited (LSbp)

Project Director: Malinda Facey

Project Manager: Nathan Baker

Technical Director: Nicola Roche

Technical Manager: Ildike Piercy

Report No. 21894/R05

Date: June 2022



QMS Certification Services

This report was prepared using
Umwelt's ISO 9001 certified
Quality Management System.

Acknowledgement of Country

Umwelt and Lightsource bp would like to acknowledge the traditional custodians of the Dubbo and Wellington area and pay respect to their cultural heritage, beliefs and continuing relationship with the land.

Umwelt and Lightsource bp would also like to acknowledge the post-contact experiences of Aboriginal people who have attachment to the Wellington area.

We pay our respect to the Elders – past, present and future – for they hold the memories, traditions, culture and hopes of Aboriginal people in the area.

Disclaimer

This document has been prepared for the sole use of the authorised recipient and this document may not be used, copied or reproduced in whole or part for any purpose other than that for which it was supplied by Umwelt (Australia) Pty Ltd (Umwelt). No other party should rely on this document without the prior written consent of Umwelt.

Umwelt undertakes no duty, nor accepts any responsibility, to any third party who may rely upon or use this document. Umwelt assumes no liability to a third party for any inaccuracies in or omissions to that information. Where this document indicates that information has been provided by third parties, Umwelt has made no independent verification of this information except as expressly stated.

©Umwelt (Australia) Pty Ltd

Document Status

Rev No.	Reviewer		Approved for Issue	
	Name	Date	Name	Date
01	Nicola Roche	3 February 2022	Malinda Facey/Nathan Baker	3 February 2022
02	Ildike Piercy	22 February 2022	Malinda Facey/Nathan Baker	1 March 2022
03	Ildike Piercy	27 April 2022	Malinda Facey/Nathan Baker	27 April 2022
04	Ildike Piercy	29 June 2022	Malinda Facey/Nathan Baker	30 June 2022

Table of Contents

1.0	Introduction	1
1.1	Purpose of this Heritage Management Plan	2
1.1.1	HMP Preparation	3
1.1.2	Consultation	4
1.1.3	Application of the HMP	4
1.2	Overview of the Development	4
1.2.1	Development Setting	4
1.3	Development Area	7
1.4	Components and Features	9
1.5	Construction	10
1.5.1	Early Works – Construction Activities	10
1.5.2	Main Works – Construction activities	11
1.6	Operation	11
1.7	Decommissioning	12
2.0	Legislative Context	13
2.1	Environmental Planning and Assessment Act 1979	13
2.2	National Parks and Wildlife Act 1974	13
2.3	Native Title Act 1993 (Commonwealth)	14
2.4	Heritage Act 1977	14
2.4.1	State Heritage Register	14
2.4.2	State Agency Heritage Registers	14
2.4.3	Archaeological Relics	15
2.5	Local Environmental Plan	15
2.6	The Burra Charter	15
3.0	Aboriginal Party Consultation	17
3.1	Consultation Regarding the HMP	17
4.0	Previous Aboriginal Cultural Heritage Assessment	18
5.0	Previous Historical Heritage Assessment	21
6.0	Significance Assessment	24
6.1	Aboriginal Cultural Heritage	24
6.2	Historical (non-Aboriginal) Cultural Heritage	27
6.2.1	Noonee Nyrang Homestead	27
6.2.2	Other Heritage Items	28

7.0	Management Strategies	29
7.1	Aboriginal Heritage Management	29
7.1.1	Mitigation Measures	29
7.1.2	Identification of Previously Unknown Aboriginal Cultural Heritage Sites	34
7.2	Historical Heritage Management	36
7.2.1	Mitigation Measures	36
7.2.2	Identification of Previously Unknown Historical Heritage Sites	37
7.3	Training Requirements	37
8.0	Review and Improvement	40
9.0	Closing	41

Figures

Figure 1.1	Regional Context	6
Figure 1.2	Development Area	8
Figure 4.1	Aboriginal Cultural Heritage Sites and Artefacts (within Development)	20
Figure 5.1	Historical Heritage Sites and Artefacts (within Development)	23
Figure 7.1	Heritage Sites (within Development) to be Fenced or Salvaged	39

Tables

Table 1.1	Relevant HMP Development Consent Conditions (SSD 8895)	2
Table 3.1	Summary Aboriginal Party Consultation	17
Table 6.1	Summary of Archaeological Significance for Newly Recorded Sites within the Development Area (NGH 2018)	25
Table 6.2	State Heritage Inventory listing for the Noonee Nyrang Homestead (NGH 2019a)	28
Table 7.1	Sites to be Avoided and Protected	30
Table 7.2	Items subject to archaeological salvage (surface collection)	31

Appendices

Appendix 1	DPIE Approval of Experts
Appendix 2	Stakeholder Consultation
Appendix 3	AHIMS Search Results
Appendix 4	Heritage Mitigation Strategies (Consolidated)

1.0 Introduction

Lightsource Development Services Australia Pty Ltd, a wholly owned subsidiary of Lightsource bp Renewable Energy Investments Limited (LSbp) received development consent for the Wellington North Solar Farm (SSD 8895) in April 2021.

LSbp is a global leader in the development and management of solar energy projects, and a 50:50 joint venture with bp. Its purpose is to deliver affordable and sustainable solar power for businesses and communities around the world. LSbp is active in 14 countries, across six continents, however are continuing to rapidly expand globally. LSbp provides a full service to its customers, from initial site selection, financing and permitting through to construction, long-term operation and decommissioning. Of the 14 countries LSbp is active in, it currently has seven in-country Environmental Planning and Sustainability teams (Australia, Brazil, Netherlands, Republic of Ireland, Spain, United Kingdom and USA).

The development is located approximately seven kilometres (km) northeast of Wellington in New South Wales (NSW). It is wholly within the Dubbo Regional Local Government Area (LGA). The development involves the construction, operation and decommissioning of a 330 megawatt (MW) ac/415 MW peak solar farm and associated infrastructure.

The development consent was granted by a delegate of the Minister for Planning and Public Spaces under section 4.38 of the NSW *Environmental Planning and Assessment Act 1979* (EP&A Act).

This Heritage Management Plan (HMP) has been prepared to address the requirements of the development consent and to ensure appropriate management of heritage within the development area. The HMP is informed by the:

- Aboriginal Cultural Heritage Assessment report (ACHAR) prepared for the Wellington North Solar Farm in 2018 by NGH Environmental (NGH).
- Addendum Aboriginal Cultural Heritage Assessment Report for the Wellington North Solar Farm subsequently prepared in 2019 by NGH.

The purpose of the ACHAR was to provide an assessment of the Aboriginal cultural values associated with the development and to assess the cultural and scientific significance of any Aboriginal heritage sites identified. The addendum ACHAR documents the subsequent assessment undertaken for an additional 118.6 ha transmission line route to investigate the presence of any Aboriginal sites, assess impacts to cultural heritage values, and provide management strategies to mitigate any potential impacts within the additional area.

A historic heritage assessment was also prepared for the development by NGH in 2019 and the results of this report have also been incorporated into this HMP.

1.1 Purpose of this Heritage Management Plan

The SSD 8895 consent included several administrative and environmental conditions, as well as environmental management and reporting requirements, that necessitate the preparation of several post-approval management plans and strategies. This HMP has been prepared to meet the requirements of Condition 23 within Schedule 3 of the development consent.

The SSD 8895 consent also includes Condition 22 (Schedule 3) which stipulates that prior to undertaking any development activities that could directly or indirectly impact the Aboriginal heritage items identified within the development area, salvage and relocation of these items must be undertaken.

This HMP has been developed to meet the methodology requirements of Condition 22 (in addition to requirements specified under Condition 23) and identifies the mitigation measures for heritage sites within the development area that are required to be implemented to demonstrate that the relevant performance measures are achieved.

A compliance matrix for this HMP and Schedule 3 (Condition 22 and Condition 23) requirements is presented in **Table 1.1** below.

Table 1.1 Relevant HMP Development Consent Conditions (SSD 8895)

Schedule	Condition	Where Addressed in this HMP
3	Condition 22 The Applicant must ensure the development does not cause any direct or indirect impacts on the Aboriginal heritage items identified in Table 1 in Appendix 3 or located outside the approved development footprint.	Table 7.1, Section 7.2.1 and Appendix 3
	Prior to carrying out any development that could directly or indirectly impact the heritage items identified in Table 2 of Appendix 3, the Applicant must salvage and relocate the item/s that would be impacted to a suitable alternative location, in accordance with the <i>Code of Practice for Archaeological Investigation of Aboriginal Objects in NSW</i> (DECCW, 2010), or its latest version.	Table 7.2, Section 7.2.2 and Appendix 3
	Note: The location of the Aboriginal heritage items referred to in this condition are shown in the figure in Appendix 3.	Table 7.1, Table 7.2 and Appendix 3
3	Condition 23 Prior to carrying out any development that could directly or indirectly impact the heritage items identified in Appendix 3, the Applicant must prepare a Heritage Management Plan for the development to the satisfaction of the Planning Secretary. This plan must:	This HMP
	(a) be prepared by suitably qualified and experienced persons whose appointment has been endorsed by the Planning Secretary;	Appendix 1
	(b) be prepared in consultation with Heritage NSW, Aboriginal Stakeholders and Council;	Section 3.0 and Appendix 2
	(c) include a description of the measures that would be implemented for:	This HMP and Section 7.0
	protecting the Aboriginal heritage items identified in Table 1 in Appendix 3 or items located outside the approved development footprint, including fencing off the Aboriginal heritage items prior to carrying out any development that could directly or indirectly impact the heritage items located in Table 2 of Appendix 3;	Table 7.1 and Section 7.1.1.2

Schedule	Condition	Where Addressed in this HMP
	salvaging and relocating the Aboriginal heritage items located within the approved development footprint, as identified in Table 2 of Appendix 3;	Table 7.2 and Section 7.1.1.3
	a contingency plan and reporting procedure if: previously unidentified heritage items are found; or Aboriginal skeletal material is discovered	Sections 7.1.2 and 7.2.2
	ensuring workers on site receive suitable heritage inductions prior to carrying out any development on site, and that records are kept of these inductions;	Section 7.3
	ongoing consultation with Aboriginal stakeholders during the implementation of the plan; and	Sections 3.0, 7.1.1.1 and Appendix 2
	ensuring the project does not cause any direct or indirect impacts to the Noonee Nyrang Homestead, which has local heritage value under the Wellington LEP (Item I11).	Section 7.2
	(d) include a program to monitor and report on the effectiveness of these measures and any heritage impacts of the project.	Section 7.1.1.3
	Following the Planning Secretary's approval, the Applicant must implement the Heritage Management Plan	Section 7.0

The authors of this HMP also acknowledge that other relevant administrative and environmental conditions, as well as environmental management and reporting requirements, apply to this HMP and have been addressed throughout this document. Similarly, other management aspects dealt with in overarching environmental management documentation, strategies or plans e.g. the Environmental Management Strategy (EMS) are also referred to.

1.1.1 HMP Preparation

This HMP has been prepared by Ildike Piercy (Umwelt Principal Archaeologist) and Nicola Roche (Umwelt Manager, Cultural Heritage), with further support provided by Andrew Crisp (Senior Archaeologist, Cultural Heritage) and Tim Adams (Principal Archaeologist, Historical Heritage). Drafting input was provided by Umwelt's drafting team.

In accordance with Schedule 3, Condition 23(a) Umwelt requested the Secretary's endorsement of these persons to prepare this HMP. This request was provided 10 January 2022. The Department reviewed the nominations and supporting information and was satisfied that these experts are suitably qualified and experienced. Consequently, the Department advised that the Secretary approves the appointment of Nicola Roche, Ildike Piercy, Andrew Crisp and Tim Adams of Umwelt to prepare this HMP. Records of this endorsement are provided in **Appendix 1** of this HMP.

The HMP is informed by the Aboriginal Cultural Heritage Assessment report prepared for the Wellington North Solar Farm in 2018 by NGH and the Addendum Aboriginal Cultural Heritage Assessment for the Wellington North Solar Farm subsequently prepared in 2019 by NGH. During the process of the development of the ACHAR, information relevant to the assessment of Aboriginal cultural heritage values within the Project Area was provided by representatives of registered Aboriginal parties who participated in the survey with NGH. A historic heritage assessment was also prepared for the development by NGH in 2019 and the results incorporated into this HMP. Umwelt cannot comment on the qualifications and experience of these persons and their inputs/deliverables have been relied upon in the preparation of this HMP. Umwelt has however assumed that their expertise is of a professional standard as relevant to their role during the works undertaken, and reviewed these inputs to the extent needed to prepare this HMP.

1.1.2 Consultation

Schedule 3, Condition 23(b) of the development consent requires that the HMP be prepared in consultation with Heritage NSW, Aboriginal Stakeholders and Council.

The consultation with Heritage NSW and the registered Aboriginal parties is relevant, particularly to the management of potential environmental impacts to Aboriginal and non-Aboriginal heritage items and reflect the requirements of Condition 23 of Schedule 3.

Further information regarding consultation with registered Aboriginal parties is provided within **Section 3.0** of this HMP, with the full set of consultation records, also encompassing Heritage NSW and Dubbo Regional Council (Council) provided in **Appendix 2**.

1.1.3 Application of the HMP

This HMP applies to all employees, contractors and visitors during the construction, operation and decommissioning of the development, as described in SSD 8895. However, the greatest risk of harm to the identified Aboriginal or historical cultural heritage values and sites is during the construction (early and main works) phase of the project and as such is the focus of this HMP. During operations and maintenance, all heritage matters would be well understood, and salvage works completed, such that the potential for new heritage issues or constraints is unlikely. During decommissioning, the HMP would be revisited, re-evaluated and updated based on appropriate requirements, standards and guidelines that apply at the time.

The EMS identifies the key personnel and the environmental management responsibilities for the development under the LSbp Integrated Management System, however key heritage roles and responsibilities are identified in **Section 7.0** and **Appendix 4**.

Management measures developed for this HMP that will be implemented for construction, operation and decommissioning of the development are listed below, each of which are discussed in detail in **Section 7.0**.

- Aboriginal Heritage Management, including identification of previously unknown Aboriginal Cultural Heritage Sites, refer to **Section 7.1**.
- Historic Heritage Management, including identification of previously unknown Historical Heritage Sites, refer to **Section 7.2**.

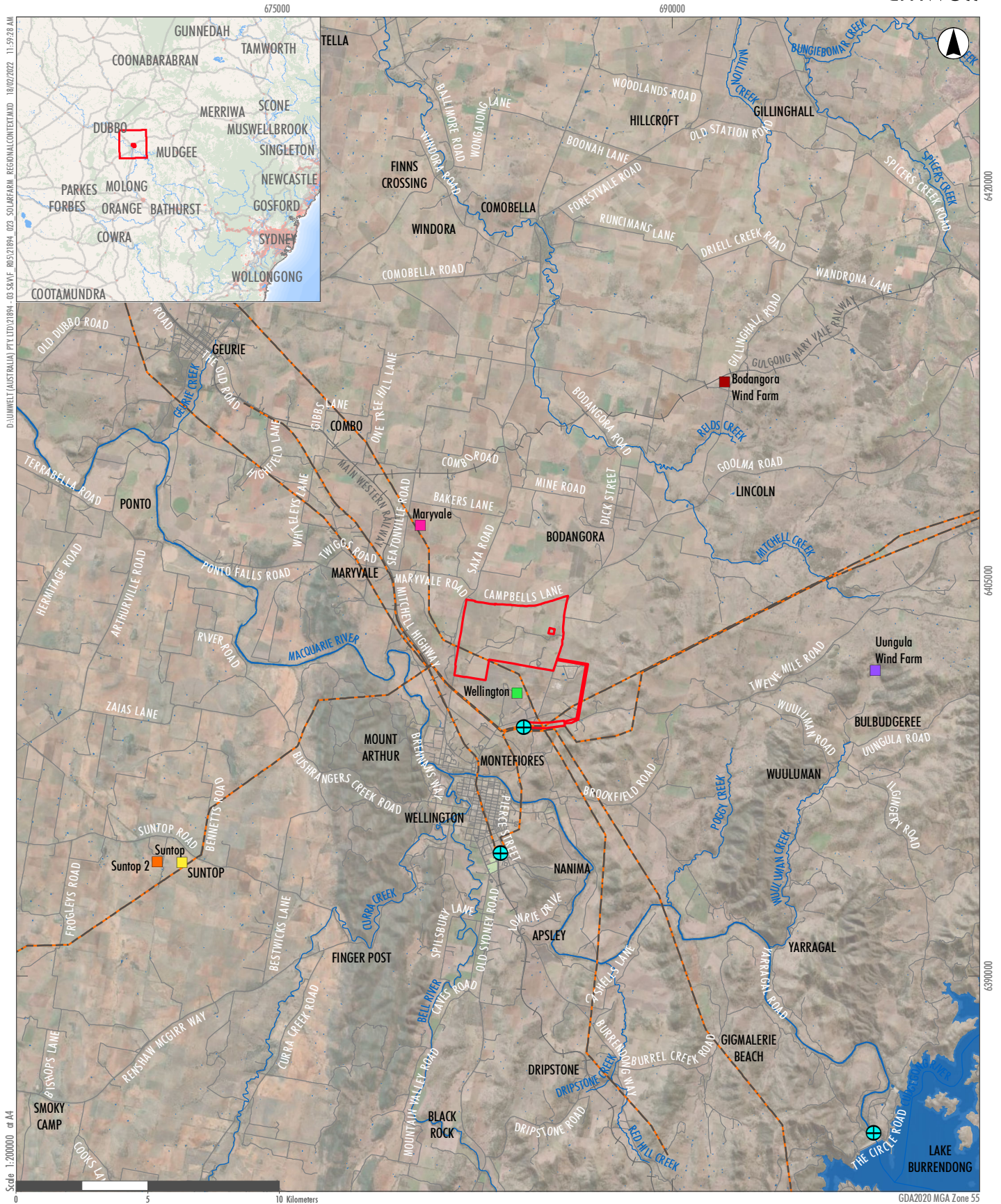
1.2 Overview of the Development

1.2.1 Development Setting

The development area is in a predominantly agricultural setting, approximately 3.4 km southeast of the village of Bodangora (refer to **Figure 1.1**). The nearest regional centre, Dubbo, is located approximately 40 km northwest of the development area. The development area is located immediately adjacent to the Wellington Correctional Centre and approximately 300 m northwest of the Macquarie Correctional Centre.

The development area is adjacent to the Wellington Solar Farm, which will be operational in early 2022 and is also owned by LSbp. The surrounding area is emerging as a key centre of renewable energy production in NSW, and forms part of the NSW Government's Central-West Orana Renewable Energy Zone (REZ). Three other solar farm projects have been approved within a 50 km radius of the development, including the Maryvale Solar Farm which is located approximately 2.5 km northwest of the development area. There are several wind farms in the vicinity of the Development and/or within the Central-West Orana REZ. Closest to the development are the Bodangora Wind Farm to the north-east (operational), and the Ungula Wind Farm to the east (approved, SSD 6687). Ungula Wind Farm is of particular relevance to the development with respect to potential cumulative impacts, if constructed concurrently.

The development area is zoned RU1 Primary Production and SP2 Electricity Supply and is comprised of gently undulating land which has been heavily disturbed by historical agricultural activity.



Legend

- ▭ Development Site
- ⊕ Existing Substation
- Existing Transmission Lines
- Road
- Railway Line
- Drainage Line
- Water Body

Nearby Renewable Energy Projects

- Maryvale Solar Farm
- Suntop Solar Farm
- Suntop Stage 2 Solar Farm
- Ungula Wind Farm
- Wellington Solar Farm
- Bodangora Wind Farm

FIGURE 1.1

Wellington North Solar Farm
Regional Context

1.3 Development Area

The development area is the total area of the development, including the development boundary. It comprises approximately 978 ha of freehold land, Crown land and road reserves contained within the development boundary.

The development area is comprised of three key components, including:

- Solar farm site
- Transmission line route

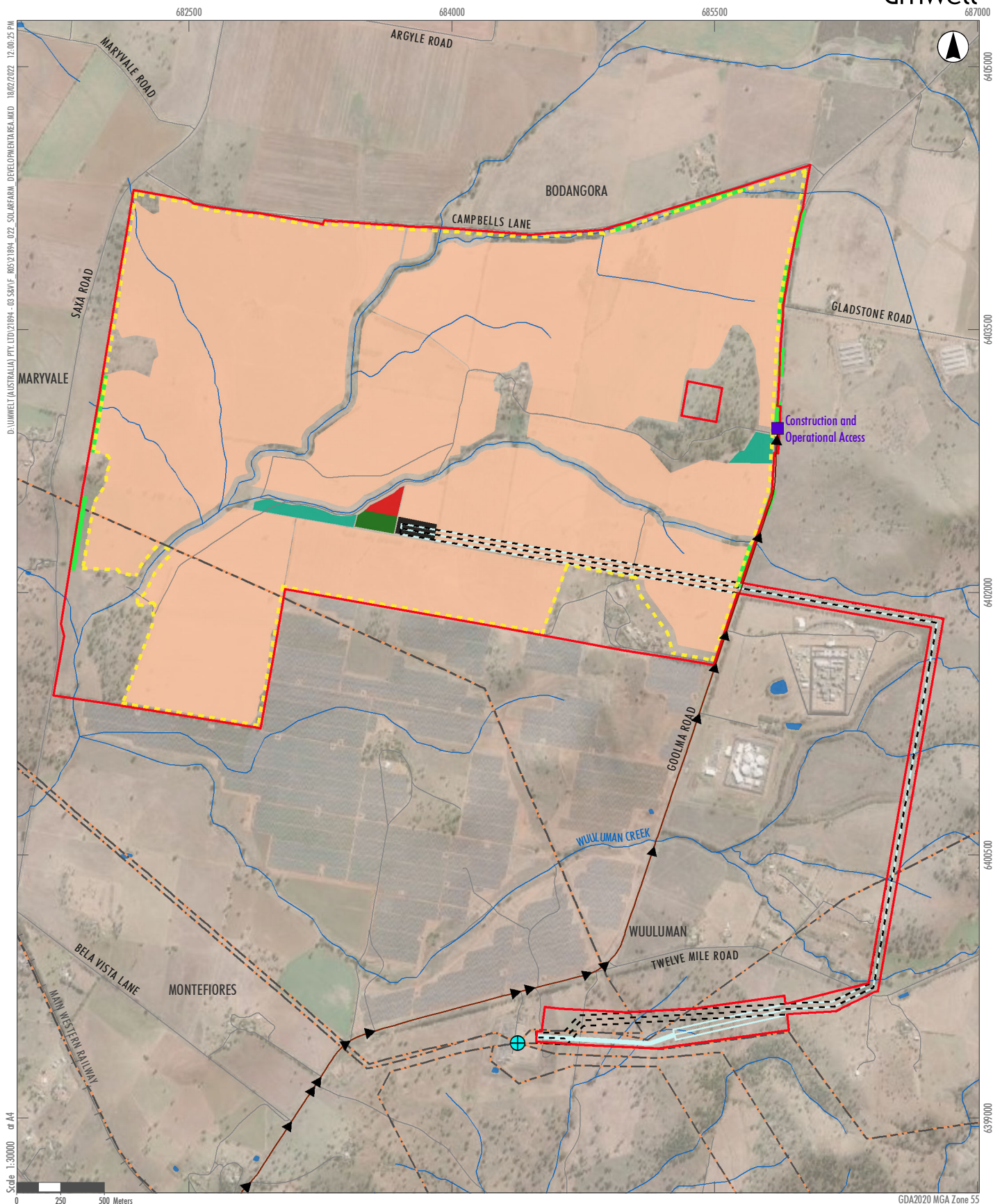
Transgrid Wellington substation connection, however the Transgrid infrastructure and assets, and most of the connection works would be approved and undertaken under Part 5, Division 5.1 of the *Environmental Planning and Assessment Act 1979* (EP&A Act) and therefore are not considered in this HMP.

The solar farm site contains all solar infrastructure and is made up of Lots 75-84 and 119-121 DP 2987, Lots 1 and 2 DP 1104720, Lot 3 DP 976701, Lot 1 DP 808748, Lot 100 DP 750760, Lot 1 DP 664645 and Lot 1 DP 1206579.

The transmission line route contains the transmission lines and associated transmission line infrastructure and is made up of Lot 106 DP 2987, Lot 73 DP 750760, Lot 2 DP 1053234, Lot 32 DP 622471, Lot 1 DP 1226751, Lot 1 DP 1249719 and Lot 7 DP 810725.

The new transmission lines will connect to Transgrid's Wellington substation, located approximately 2 km south of the development (Lot 1 DP 1226751).

The development area is shown below in **Figure 1.2**.



Legend

- | | | |
|---|--|---|
| Development Site | Construction Compound | Transmission Line Option A |
| ⊕ Existing Substation | Future Battery Storage | Transmission Line Option B |
| Existing Transmission Lines | Intersection Upgrade | ➔ Transport Route |
| Road | Operations and Maintenance Facility | Landscaping |
| Railway Line | Solar Arrays | Fence |
| Drainage Line | Substation | Construction and Operational Access |
| Water Body | | |

FIGURE 1.2

Wellington North Solar Farm
Development Area

1.4 Components and Features

The key components and features of the development include:

- approximately 1.2 million photovoltaic (PV) modules
- approximately 155 inverter stations
- underground electrical conduits and cabling to connect the solar panels, combiner boxes and inverters
- an onsite substation containing up to two transformers and associated switchgear, occupying an area of approximately 2 ha
- a 330Kv transmission line connecting to Transgrid's Wellington substation
- construction and operational access via a single access point off Goolma Road (also known as the primary site access)
- transmission line access points off Goolma Road and Twelve Mile Road
- road upgrades, including upgrades to facilitate construction and operational access
- internal access tracks and upgrades to existing access roads (including watercourse crossings), where required
- an office and amenities building, operations and maintenance building and car park
- perimeter security fencing and CCTV
- a landscaped vegetation buffer.

The PV modules will be mounted on either east-west horizontal tracking systems or north-orientated fixed-tilt structures and will have a maximum height of approximately 4 m. The current solar farm design has also identified the potential for bi-facial single-axis tracking modules; however, this is subject to change following detailed design.

The inverter stations will allow conversion of DC module output to AC electricity and transformation to medium voltage for site reticulation (typically 22kV or 33kV). The inverter stations will be approximately 3 m high.

The approved transmission line route is shown in **Figure 1.1** and **Figure 1.2**. The transmission line will have an associated easement up to 60 m wide. The approved development includes two overhead and/or underground options for the transmission line for the construction of the final 1.2 km of the transmission line (nearest to the Wellington substation). The two alternative transmission line routes (Option 1 and Option 2) are shown in **Figure 1.2**.

Water usage during the construction period will be minimal and will be primarily limited to dust suppression activities. Water will be sourced from onsite groundwater bores (subject to obtaining the necessary Water Access Licences) and/or a water filling station operated by Council. Use of the water filling station will be undertaken by arrangement with Council, and water would then be trucked to the development area. During operations, potable water supplies will be trucked to the development area and stored in tanks near the office and amenities building.

The approved development layout includes an area for a potential future battery energy storage system (BESS) however the construction or installation of a BESS will require a modification to SSD 8895 or separate development consent.

1.5 Construction

1.5.1 Early Works – Construction Activities

The early works phase of the development includes preparatory works which must occur prior to the commencement of main construction activities.

To comply with the conditions of the development consent, these early works are limited to:

- road upgrades required under Condition 6 of Schedule 3 of the development consent
- building/road dilapidation surveys
- vegetation buffer planting
- installation of fencing
- artefact survey and/or salvage
- overhead line safety marking
- geotechnical drilling
- surveying.

Early works are currently scheduled to start at the end of Q1/beginning of Q2 in 2022, and the construction period for these early works will be approximately three months. As per Condition 16 within Schedule 3 of the development consent, construction hours will generally be limited to Monday to Friday 7:00 am to 6:00 pm and Saturday 8:00 am to 1:00 pm, with no works on Sundays or Public Holidays. Some works outside these hours may occur as permitted by Condition 16 of Schedule 3. Early works will have a construction workforce of approximately 30 workers.

A key activity within the early works will be the road upgrades required at the intersection of Goolma Road and the construction and operational access. These works will consist of a new Basic Right Turn (BAR) Auxiliary Left Turn (AUL) treatment, designed and constructed in accordance with the Austroads Guide to Road Design (as amended by Transport for NSW supplements). The existing entry point on Goolma Road (immediately south of the new construction and operational access) will be closed and the road reserve will be re-instated to match the surrounding roadside landform.

With early works focusing on the road upgrades required under Condition 6 of Schedule 3 of the development consent some residual approved early work construction activities may occur during the main works period described below.

1.5.2 Main Works – Construction activities

Main works are currently scheduled to start at the end of Q2/beginning of Q3 in 2022. The main works construction period will last for up to 18 to 24 months, including a peak period of approximately nine months. Consistent with early works, the main works construction hours will generally be limited to Monday to Friday 7:00 am to 6:00 pm and Saturday 8:00 am to 1:00 pm, with no works on Sundays or Public Holidays. Some works outside these hours may, consistent with early works, occur as permitted by Condition 16 of Schedule 3. The development will generate around 400 direct full-time equivalent (FTE) jobs during construction, with a maximum of 250 at any one time.

- Construction activities will include:
- site establishment and enabling works including fencing, ground preparation, construction of the internal access tracks, preliminary civil works and drainage works
- installation of steel post and framing system for the solar panels
- installation of underground cabling and installation of power conversion (inverter) stations and footings
- installation of solar panels
- construction of the operations and maintenance facility
- construction of the on-site substation, transmission line and connection to Transgrid's Wellington substation.

During the peak period, the development is expected to generate up to 267 two-way construction traffic movements, including 55 heavy vehicle movements, 80 shuttle bus movements (associated with worker transport) and 132 light vehicles movements.

1.6 Operation

The expected operational life of the development is approximately 30 years, however infrastructure upgrades throughout the development lifecycle may extend its operational life. The key activities that would be undertaken during operation include:

- visual inspections, maintenance and cleaning of solar panels and the substation
- vegetation management, which may include:
 - grazing of sheep
 - mechanical vegetation maintenance
 - maintaining groundcover vegetation
 - maintenance of landscaping, including the vegetation buffer
- site security and operational response
- replacement of equipment and infrastructure
- pest plant and animal control.

The development will have around 2-4 full time staff during the operation and maintenance phase.

1.7 Decommissioning

At the end of the development's operational life, unless the Planning Secretary agrees otherwise, the solar farm infrastructure will be decommissioned and removed. This will include removal of solar panels and foundation posts, the substation and associated connections and underground cabling, the operations and maintenance facility, carpark and fencing.

Disturbed areas will be rehabilitated to ensure the development area is safe, stable and non-polluting. The development area will be restored to its pre-development agricultural land capability (at least Class 3).

2.0 Legislative Context

In relation to this HMP, the relevant statutory controls for the protection of Aboriginal heritage are the EP&A Act and the *NSW National Parks and Wildlife Act 1974* (the NPW Act). The relevant legislation for the protection of historical heritage is the *Heritage Act 1977*.

2.1 Environmental Planning and Assessment Act 1979

The EP&A Act regulates development activity in NSW. The Wellington North solar farm was approved as State Significant Development and will be subject to the provisions of Part 4 of the EP&A Act.

Division 4.41 (d) of the EP&A Act specifies that it is not necessary to obtain an Aboriginal heritage impact permit (AHIP) under Section 90 of the NPW Act for designated State Significant Development. Projects approved as State Significant Development under the EP&A Act are subject to conditions of approval issued by the Department of Planning, Industry and Environment (DPIE) and (where relevant) Aboriginal cultural heritage is addressed by appropriate conditions, as is the case for the development.

2.2 National Parks and Wildlife Act 1974

Heritage NSW is primarily responsible for regulating the management of Aboriginal cultural heritage in NSW under the NPW Act. The NPW Act is accompanied by the National Parks and Wildlife Regulation 2019 (the Regulation) and a range of codes and guides including the *Guide to Investigating, Assessing and Reporting on Aboriginal Cultural Heritage in NSW* (OEH, 2011), the Consultation Requirements and the Code of Practice (DECCW 2010b).

The NPW Act defines an Aboriginal object as:

...any deposit, object or material evidence (not being a handicraft made for sale) relating to the Aboriginal habitation of the area that comprises New South Wales.

Under Section 84 of the NPW Act, an Aboriginal Place must be declared by the Minister as a place that, in the opinion of the Minister, is or was of special significance with respect to Aboriginal culture. Section 86(4) of the NPW Act states that a person must not harm or desecrate an Aboriginal Place.

In accordance with Section 86(1) of the NPW Act, it is an offence to harm or desecrate a known Aboriginal object, whilst it is also an offence to harm an Aboriginal object under Section 86(2). As per the NPW Act **harm** to an object or place is defined as any act or omission that:

- “destroys, defaces or damages an object or place, or
- in relation to an object – moves the object from the land on which it had been situated, or
- is specified by the regulations, or
- causes or permits the object or place to be harmed in a manner referred to in paragraph (a), (b) or (c),

- but does not include any act or omission that:
 - desecrates the object or place (noting that desecration constitutes a separate offence to harm), or
 - is trivial or negligible, or
 - is excluded from this definition by the regulations”.

Section 87(1) of the NPW Act specifies that it is a defence to prosecution under Section 86(1) and Section 86(2) if the harm or desecration of an Aboriginal object was authorised by an Aboriginal Heritage Impact Permit (AHIP) and the activities were carried out in accordance with that AHIP. As noted above, is not necessary to obtain an AHIP under Section 90 of the NPW Act for designated State Significant Development.

2.3 Native Title Act 1993 (Commonwealth)

The *Native Title Act 1993* (NT Act) recognises that Aboriginal people have rights and interests to land and waters which derive from their traditional laws and customs. Native Title may be recognised in places where Indigenous people continue to follow their traditional laws and customs and have maintained a link with their traditional country. It can be negotiated through a Native Title Claim, Indigenous Land Use Agreement (ILUA) or future act agreements.

There are currently no Native Title claims or applications over the development area.

2.4 Heritage Act 1977

The *Heritage Act 1977* provides several mechanisms by which items and places of heritage significance may be protected. The Act provides protection of historic places, structures, relics, moveable objects and landscapes of significance. The *Heritage Act 1977* also affords protection to Aboriginal places of State heritage significance included on the State Heritage Register (SHR) or subject to an Interim Heritage Order.

2.4.1 State Heritage Register

The Heritage Council of NSW maintains the State Heritage Register. Only those items which are of state-level heritage significance in NSW are listed and inclusion on the SHR controls activities such as alteration, damage, demolition and development.

There are no SHR listed sites located within the development area.

2.4.2 State Agency Heritage Registers

Councils and state agencies in NSW are involved in the protection, management and conservation of heritage as both owners and as managers of the majority of heritage items and heritage conservation areas. (HCAs). As such, state agencies are required to keep a register of heritage places under their management in accordance with Section 170 of the *Heritage Act 1977*. LEPs, HCAs and Development Control Plans (DCPs) are prepared by councils to protect heritage items and heritage items are listed through a Heritage Schedule attached to the LEP. The Noonee Nyrang Homestead is included on the heritage schedule of the Wellington LEP as item I11.

Information on individual heritage listings is also available through the inventory sheets within the State Heritage Inventory (SHI) database administered by Heritage NSW. These sheets generally include a brief statement of the significance of the property, a description, photograph, and some include historic notes. The corresponding SHI inventory number for the Noonee Nyrang Homestead is #2640142.

2.4.3 Archaeological Relics

Part 6 Division 9 of the *Heritage Act 1977* protects archaeological ‘relics’ from being ‘exposed, moved, damaged or destroyed’ by the disturbance or excavation of land. This protection extends to the situation where a person has ‘reasonable cause to suspect’ that archaeological remains may be affected by the disturbance or excavation of the land. It applies to all land in NSW that is not included in the SHR. A ‘relic’ is defined by the *Heritage Act 1977* as:

Any deposit, object of material evidence which relates to the settlement of the area that comprises NSW, not being Aboriginal settlement, and has local or state significance.

Section 139 of the *Heritage Act 1977* requires any person who knows or has reasonable cause to suspect that their proposed works will expose or disturb a ‘relic’ to first obtain an Excavation Permit from the Heritage Council of NSW (pursuant to Section 140) unless there is an applicable exception (pursuant to Section 139(4)). In cases where a Section 139/140 permit is not required for projects assessed under Part 5.1 of the EP&A Act, works would need to be conducted in accordance with the intent of the *Heritage Act 1977*.

Section 146 of the *Heritage Act 1977* requires any person who is aware or believes that they have discovered or located a relic must notify the Heritage Council of NSW providing details of the location and other information required.

2.5 Local Environmental Plan

The Wellington Council Local Environmental Plan (LEP) 2012 identifies and protects heritage conservation areas and listed buildings/items, identifies environmentally sensitive land, and prescribes land use practices.

Heritage items (if any) are listed and described in Schedule 5 (Environmental Heritage) of that LEP.

There is one historical heritage site of local significance listed in the Wellington Council LEP 2012 located within the development area: the Noonee Nyrang Homestead (Item No. I 11).

2.6 The Burra Charter

The Australia ICOMOS (International Council on Monuments and Site) Charter for the conservation of places of cultural significance (the Burra Charter) (current edition 2013) sets a standard of practice for those who provide advice, make decisions about, or undertake works to places of cultural significance including owners, managers and custodians.

The Charter is not a statutory document but does provide specific guidance for physical and procedural actions that should occur in relation to significant places. A copy of the charter can be accessed at: <http://icomos.org/australia>

The historical archaeological assessment of the development area (NGH 2018) was prepared in accordance with the Burra Charter.

3.0 Aboriginal Party Consultation

Aboriginal people are the primary determinants of the significance of Aboriginal objects and/or places. Consultation with Aboriginal parties is therefore required to document the significance of Aboriginal objects and/or places and to obtain an Aboriginal cultural perspective on determining and carrying out appropriate strategies to mitigate impacts to Aboriginal heritage.

Consultation with Aboriginal parties regarding the development was undertaken previously during the preparation of the ACHAR (NGH 2018) and Addendum ACHAR (NHG 2019) in accordance with clause 80C (now Division 2, Clause 60) of the *National Parks and Wildlife Regulation 2010* and the *Aboriginal Cultural Heritage Consultation Requirements for Proponents* (DECCW 2010a) (the Consultation Requirements). All consultation undertaken for the Wellington North solar farm ACHAR is clearly outlined and documented in the original report (NGH 2018). Consultation with the Aboriginal community was continuous throughout the project.

Consultation regarding this HMP is a continuation of this process in accordance with the conditions of consent provided for the development (SSD 8895). On this basis, the registered Aboriginal parties consulted regarding this HMP were those consulted regarding the ACHAR; namely:

- Wellington Local Aboriginal Land Council
- Wellington Valley Wiradjuri Aboriginal Corporation
- Gallangabang Aboriginal Corporation
- Binjang Wellington Wiradjuri Heritage Survey Notification.

3.1 Consultation Regarding the HMP

This HMP has been provided to all registered Aboriginal parties with an invitation to review and comment on all aspects of the document. Any comments received from the registered Aboriginal parties in response to the HMP are summarised in **Table 3.1** and included in full in **Appendix 2**.

Table 3.1 Summary Aboriginal Party Consultation

Comment	Response
Wellington Valley Wiradjuri Aboriginal Corporation Consultation	Wellington Valley Wiradjuri Aboriginal Corporation agree to the content as presented in the proposed Lightsource bp Wellington North Solar Farm, DRAFT Heritage Management Plan, Dated: March 2022
Gallangabang Aboriginal Corporation Consultation	No response received
Binjang Wellington Wiradjuri Heritage Survey Notification Consultation	No response received
Wellington Local Aboriginal Land Council Consultation	No response received

Consultation with the RAP groups will be on-going throughout the construction (and later the decommissioning) of the development, as documented throughout this HMP.

4.0 Previous Aboriginal Cultural Heritage Assessment

NGH prepared an ACHAR for the development in 2018 and an addendum ACHAR in 2019. The ACHARs were prepared as part of the broader Environmental Impact Statement (EIS) for the development.

The purpose of the ACHAR and addendum ACHAR was to provide an assessment of the Aboriginal cultural values associated with the development, assess the cultural and scientific significance of any Aboriginal heritage sites, assess impacts to cultural heritage values, and provide management strategies to mitigate any potential impacts. Results of both ACHARs have been synthesised and provided below.

A combined total of nine new artefact scatters and 30 isolated stone artefacts were identified within the development area from the two surveys undertaken as part of the ACHAR (NGH 2018) and addendum ACHAR (NGH 2019). Two possible scarred trees were also recorded (refer to **Figure 4.1** below).

The details of all sites and the artefact records for the isolated finds are provided in Section 4.3, Table 6 within the original ACHAR (NGH 2018) and Section 3.4 within the Addendum ACHAR (NGH 2019). Over half of the artefacts recorded (n=51; 51.5%) during the surveys were located along creeks/drainage lines and their associated flats. The concentration of artefacts (n=44) in the northern portion of the tributary of Wuuluman Creek and its associated flats within site Wellington Nth AFT 9 indicates that this area was likely occupied on more than one occasion at low intensity. The presence of stone artefacts in low densities across the remainder of the development area is likely to represent the opportunistic use and movement of people through the landscape. The area was likely used intermittently over a period of time for camping, hunting and with groups moving through the landscape gathering resources.

The artefacts recorded during the surveys were manufactured primarily from volcanic material (n=51; 51.5%) and quartz (n=18; 18.1%) both of which are common resources within the region. Smaller numbers of chert (n=11; 11.1%), basalt (n=6; 6.1%), fine-grained siliceous (n=6; 6.1%), quartzite (n=6; 6.1%) and glass (n=1; 1.0%) artefacts were also recorded suggesting these materials may have been brought into the area. The presence of flakes, cores, hammerstones and an axe blank indicates that tool manufacture likely occurred onsite. The high number of cores (n=28; 28.2%) may be representative of the high discard rate of raw material in the area.

It was noted by the Aboriginal representatives that the onsite outcropping stone was of poor quality and that it would not have been suitable for artefact manufacture. No evidence of quarrying from the outcrops was identified. The use of a volcanic material for the manufacture of the edge-grounded axes is common for the region however it should be noted that two grinding grooves have been recorded to date within the AHIMS search area. The recorded grinding groove sites are respectively recorded 13 km south-west and 17 km south-east of the development. This suggests that edge-grounded axes in the Wellington area may have been shaped and sharpened within the general area and used locally.

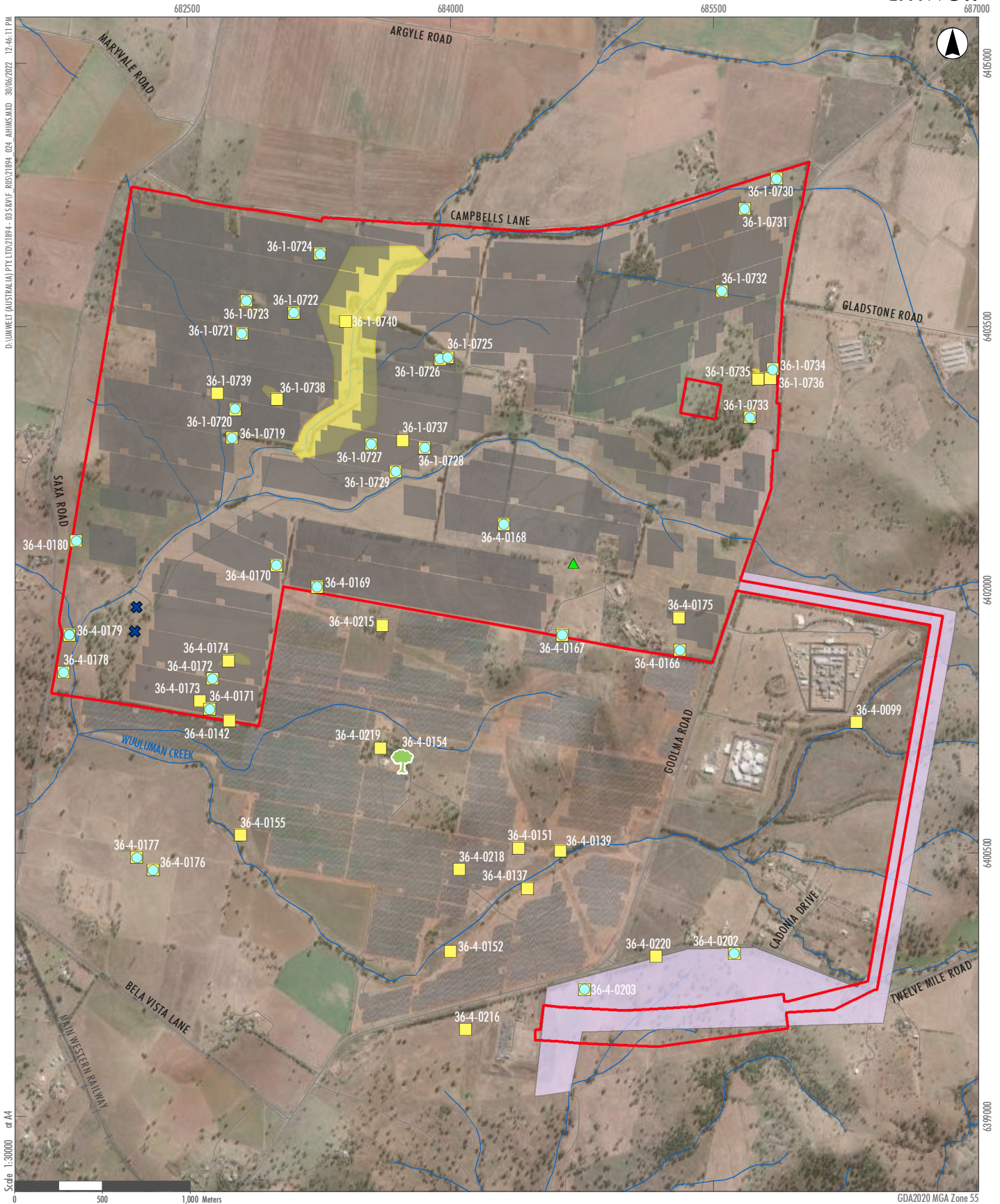
Given the level of clearing within the development area the presence of only two possible scarred trees is not surprising with few mature native trees remaining. Scarred trees provide a tangible link to the past and provide evidence of Aboriginal subsistence activities through the deliberate removal of bark or wood to create bowls or carrying dishes or shields. However, scarred trees as a site type are more ubiquitous across the broader region (n=22; 20.9%) likely due to them being more readily visible within the landscape.

The ACHAR (NGH 2018) and addendum ACHAR (NGH 2019) prepared for the development concluded that it is possible that additional stone artefacts and Aboriginal cultural material could occur within the development area. However, consideration must also be given to the level of disturbance of any such sites.

Consideration was also given to the potential for sub-surface archaeological deposits during the field assessments and discussions were held with the RAP representatives present to assess the potential for subsurface deposits across the development area. Based on a review of the land use history, an appraisal of the landscape, analysis of the regional geomorphology, level of disturbance, and the results from the field survey, it was concluded that there was negligible potential for the presence of intact subsurface deposits with high densities of objects or cultural material within the development area.

While the site Wellington Nth AFT9 was noted to have higher archaeological sensitivity given the number of artefacts present, the scatter is considered to be low density with an average of 1.2 surface artefacts per hectare. Additionally, the banks of the waterways that run through the site were inspected for any evidence of cultural layers or Aboriginal objects eroding from the deposits. No evidence for high density intact subsurface deposits was identified. It was therefore determined that while the site Wellington Nth AFT9 has higher archaeological sensitivity compared to the remainder of the development area, there was negligible potential for intact subsurface deposits. The Aboriginal party representatives present on the surveys together with the NGH Archaeologists concluded that subsurface testing was therefore not warranted.

The ACHAR further assessed the significance of these sites and provided recommendations for their management. These are discussed in **Section 6.1** and **Section 7.1.1** of this HMP.



- Legend**
- Development Site
 - Proposed Solar Panel Array
 - Road
 - Railway Line
 - Drainage Line
 - Transmission Line Area
 - Artefact Scatter
 - Heritage Items (NGH 2020)**
 - ▲ European Survey Marker Tree
 - Isolated Finds
 - ✕ Possible Scarred Tree
 - AHIMS Search**
 - Artefact
 - 🌳 Modified Tree (Carved or Scarred)

FIGURE 4.1

Results of the Aboriginal Cultural Heritage Assessment
Sites and Artefacts Identified within
the Development Area

5.0 Previous Historical Heritage Assessment

NGH prepared an Historic Archaeology Assessment report for the development in 2019 and the results presented below are replicated from this assessment. The historical heritage assessment report was prepared as part of the broader EIS for the development. The purpose was to identify any historical heritage items or sites within the development area, and if present, to provide an assessment of the associated cultural and scientific significance. The historical heritage assessment was undertaken in accordance with *Heritage Act 1977* and included statutory heritage register searches, background research, the creation of a predictive archaeological model for the development area as well as field survey and analysis of the results.

There is one historical heritage site of local significance listed on the Wellington LEP 2012 located within the development area: the Noonee Nyrang Homestead (LEP Item No. I11/SHI heritage item #2640142). The Noonee Nyrang homestead comprises a Federation style house and outhouse that includes a drop log buggy shed, stables, stallion yard and a large stone barn which predates the house. The property is historically important as the home was built for Mr W.G Smith who was prominent in the advancement and development of agriculture during the 19th and early 20th Century. The house has been modified with the addition of a timber wall at the rear of the house to enclose a courtyard to form an extra room which is now a renovated kitchen. Nyrang was held by the Smith family until purchased by Mr and Mrs Holmes in 1975 and renamed Noonee Nyrang. It is currently still privately owned by Tony and Penny Inder. Further detail on the Noonee Nyrang homestead and its historical context is provided in Section 3.2 of the Historical Archaeological Assessment (NGH 2019a).

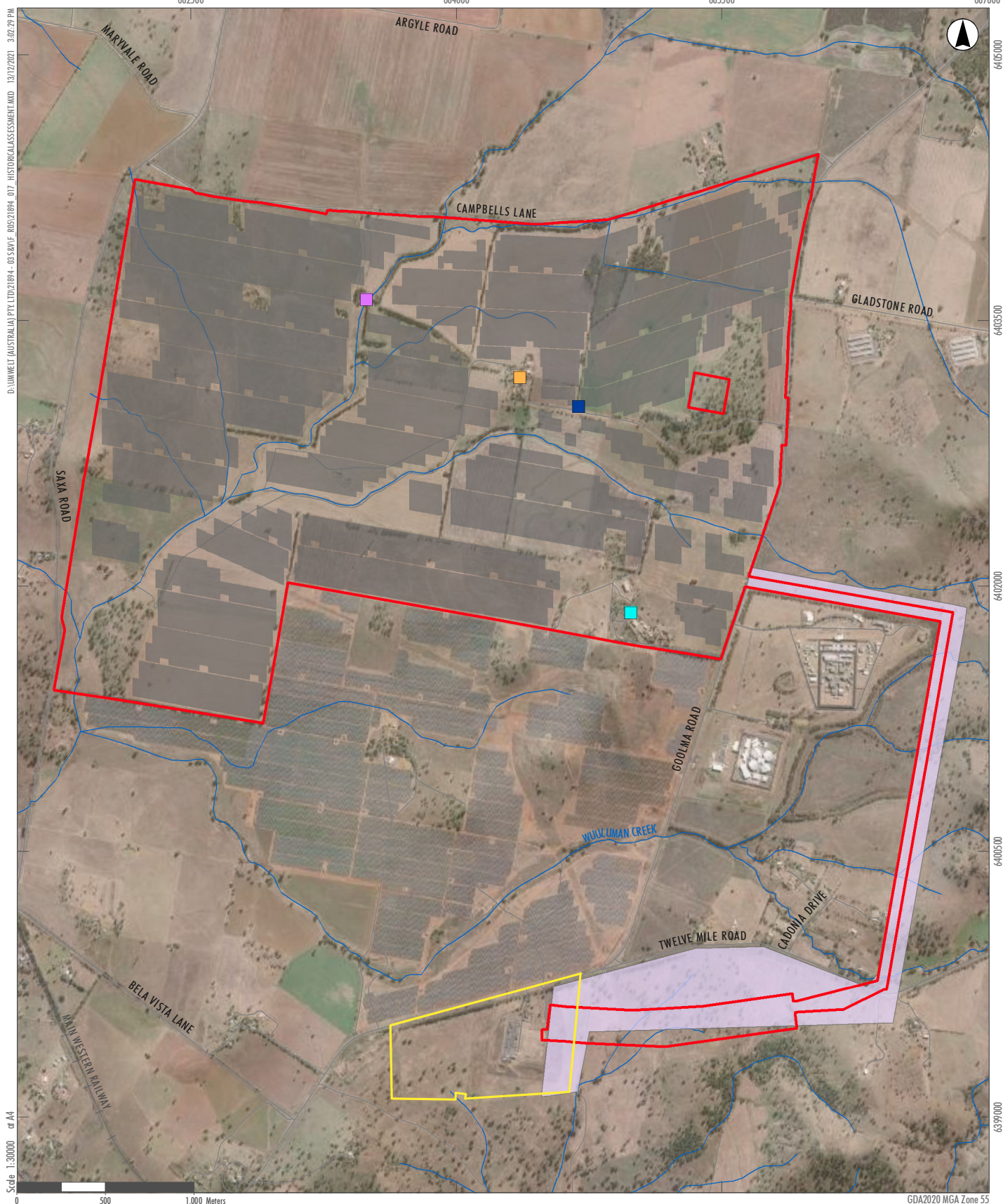
Several other non-listed historical items were also identified during the site survey including a European marker tree, stone trough and a culvert (refer **Figure 5.1** below). The stone trough and culvert are not included on the LEP listing for the Noonee Nyrang Homestead. They are constructed of local stone with the style and construction technique similar to the house, fence and stone barn, however with the addition of cemented mortar (as opposed to the lime-based mortar that was evident in the Noonee Nyrang Homestead). Council was provided with the information and given the opportunity to decide whether the trough and culvert should be included in the LEP listing. NGH has been advised by Council that these items hold no heritage significance at a local level and will not be included in the listing for the Noonee Nyrang Homestead.

The European survey marker consists of a single oval shaped scar facing north on a mature living Black Box tree. The tree is approximately 15 m in height and in good condition. The scar shows significant regrowth with evidence of this regrowth being cut away and left at the base of the tree to maintain the marker/scar. A single letter or number 'I' is observable within the scar face with any other markings if present covered by regrowth and unable to be seen. A metal nail and metal axe marks were also noted. Local Nanima Parish maps were inspected however the survey marker does not appear on any of the historic Parish maps inspected. NGH has been advised by Council that the survey marker tree holds no heritage significance at a local level and will not be included in the LEP as an item of significance.

The NSW Soil Conservation Centre (SCS) Wellington facility is also located within the development area. The SCS Wellington facility is not listed on the Wellington LEP. NGH has been advised by Council that the SCS has no heritage significance at a local level and will not be included in the LEP as an item of significance.

Background historical research was undertaken to identify any potential historical archaeology within the development area (NGH 2019a). This research involved review of a range of sources such as historic parish maps as well as secondary sources including heritage databases and records. The history of the region including landowners and land use can help to determine the type of historical archaeological features or deposits that might have been present within the development area. The development area is characterised as largely disturbed due to a longstanding history of agricultural activities with no evidence of any other structures or permanent features being constructed apart from the Noonee Nyrang Homestead and SCS Wellington facility. Accordingly, there is little evidence to suggest the existence of intact subsurface archaeological deposits within the development area, except within the immediate vicinity of the historic Noonee Nyrang Homestead. No indication of potential subsurface historical archaeological deposits was observed within the development area during the field survey either.

The Noonee Nyrang Homestead and its surrounding outbuildings (encompassing the courtyard, sheds, stock yard and gardens) present a high potential for historic archaeological subsurface deposits to occur. However, an exclusion zone around the homestead and the SCS Wellington facility has been included in the development design to prevent any harm or impact from occurring to the homestead or any associated archaeological deposits. Thus, there are no proposed impacts to historical subsurface archaeological deposits within the development area.



Legend

- Development Site
- Proposed Solar Panel Array
- Road
- Railway Line
- Drainage Line

Indicative Location of Heritage Items

- Noonee Nyrang Homestead
- Soil Conservation Research Facilities
- Stone Culvert
- Stone Trough

FIGURE 5.1

Results of the Historical Archaeological Assessment
Sites Identified within the Development Area

6.0 Significance Assessment

The assessment of significance of the Aboriginal sites within the development area was undertaken by NGH as part of the preparation of the ACHAR (NGH 2018). The assessment of significance for the historical heritage components within the development area was also undertaken by NGH as part of the preparation of the Historical Archaeological Assessment (NGH 2019). These assessments have been replicated below.

6.1 Aboriginal Cultural Heritage

As noted, in **Section 4.0**, nine new Aboriginal sites and 30 isolated artefacts were identified within the development area. Two possible scarred trees were also recorded along with the one European survey marker tree. An opportunity to identify cultural value was provided to the Aboriginal representatives during development of the ACHAR (NGH 2018) through the fieldwork and draft reporting process. Feedback about the cultural value of the sites from the Aboriginal representatives during the field survey indicated that all sites hold cultural value to the local Aboriginal community. The Aboriginal representatives also communicated the importance of the stone artefacts identified as representing tangible links to the original occupation and use of the landscape. It was requested that the artefacts be salvaged and collected prior to any ground disturbing works taking place.

NGH assessed the Aboriginal sites within the ACHAR (NGH 2018) and addendum ACHAR (NGH 2019) and determined that their potential to contribute further knowledge to the archaeological record of the region through research to was **low to moderate** (refer **Table 6.1** below) stating that while the presence of the sites can be used to assist in the development of site modelling for the local landscape, their scientific value for further research is limited. While the artefacts identified are intrinsically interesting in terms of their baseline technical information, the lack of a temporal context and the absence of information about local resources makes further conclusions about land use difficult. Their scientific value for further research is also limited due to the sparse distribution of the artefacts likely resulting from post-depositional disturbance or movement by non-Indigenous agricultural activities including clearing and ploughing.

The stone axes are considered of higher value due their relative rarity as a tool type compared to more common artefact types of flakes and cores. Axes are an indicator of a different tool use and activity, being mostly for the removal of wood from trees that could have been used for a variety of purposes such as carrying dishes, shields, spears and creating shelters as well as extraction of food such as possums and honey from tree hollows. The presence of five axes within the development area is indicative of woodworking activities having been undertaken within the area. Glass artefacts are also considered of higher value due to their rarity in the region. The presence of a single glass artefact within those identified within the development area is likely representative of the non-Indigenous contact period of occupation.

The only real potential area of research that could be facilitated by the artefacts identified would be to undertake residue analysis on the edge-ground axes to ascertain what materials were being processed with the tools. However, this is likely to be difficult as preservation of any residue on the axes is likely to be compromised by post depositional movement including pastoral and agricultural activity including potential contact with cereal crops and livestock.

The two possible scarred trees most likely represent the opportunistic use of resources while Aboriginal groups were moving through the landscape. While scarred trees are a common site type in the broader district, they are relatively rare within a 5 km buffer of the development area as the surrounding landscape has largely been cleared and modified through the agricultural development of the region. Thus, the two scarred trees recorded within the development area retain a high value as a representative example of this site type.

There are no aesthetic values associated with the archaeological site due largely to the modified and heavily disturbed landscape within the development footprint. No specific areas or items of historical value with a direct association with Aboriginal people were identified in the Project Area during the survey assessment. No comments specific to the historical value of the area were provided by the registered Aboriginal parties. There are no archival records of any major events or interactions between Aboriginal and non-Aboriginal people taking place within the development area or as collectively remembered by the Aboriginal representatives and community. There are no spiritual values associated with the development site as indicated by the Aboriginal Representatives who participated in the survey and reviewed the draft ACHAR (NGH 2018).

Table 6.1 Summary of Archaeological Significance for Newly Recorded Sites within the Development Area (NGH 2018)

AHIMS #	Site Name	Site Type	Local Archaeological Significance (ACHAR NGH 2018)
36-4-0173	Wellington Nth AFT1	Low density artefact scatter	Low
36-4-0174	Wellington Nth AFT2	Low density artefact scatter	Low to moderate
36-4-0175	Wellington Nth AFT3	Low density artefact scatter	Low
36-1-0735	Wellington Nth AFT4	Low density artefact scatter	Low
36-1-0736	Wellington Nth AFT5	Low density artefact scatter	Low to moderate
36-1-0737	Wellington Nth AFT6	Low density artefact scatter	Low
36-1-0738	Wellington Nth AFT7	Low density artefact scatter	Low
36-1-0739	Wellington Nth AFT8	Low density artefact scatter	Low
36-1-0740	Wellington Nth AFT9	Low density artefact scatter	Moderate
36-4-0176	Wellington Nth IF1	Isolated Find: Stone Artefact	Low
36-4-0177	Wellington Nth IF2	Isolated Find: Stone Artefact	Low
36-4-0178	Wellington Nth IF3	Isolated Find: Stone Artefact	Low
36-4-0179	Wellington Nth IF4	Isolated Find: Stone Artefact	Low

AHIMS #	Site Name	Site Type	Local Archaeological Significance (ACHAR NGH 2018)
36-4-0180	Wellington Nth IF5	Isolated Find: Stone Artefact	Low
36-4-0171	Wellington Nth IF6	Isolated Find: Stone Artefact	Low
36-4-0172	Wellington Nth IF7	Isolated Find: Stone Artefact	Low
36-4-0170	Wellington Nth IF8	Isolated Find: Stone Artefact	Low
36-4-0169	Wellington Nth IF9	Isolated Find: Stone Artefact	Low
36-4-0168	Wellington Nth IF10	Isolated Find: Stone Artefact	Low
36-4-0167	Wellington Nth IF11	Isolated Find: Stone Artefact	Low
36-4-0166	Wellington Nth IF12	Isolated Find: Stone Artefact	Low
36-1-0733	Wellington Nth IF13	Isolated Find: Stone Artefact	Low
36-1-0734	Wellington Nth IF14	Isolated Find: Stone Artefact	Low
36-1-0732	Wellington Nth IF15	Isolated Find: Stone Artefact	Low
36-1-0731	Wellington Nth IF16	Isolated Find: Stone Artefact	Low
36-1-0730	Wellington Nth IF17	Isolated Find: Stone Artefact	Low to moderate
36-1-0729	Wellington Nth IF18	Isolated Find: Stone Artefact	Low
36-1-0728	Wellington Nth IF19	Isolated Find: Stone Artefact	Low
36-1-0727	Wellington Nth IF20	Isolated Find: Stone Artefact	Low
36-1-0726	Wellington Nth IF21	Isolated Find: Stone Artefact	Low
36-1-0725	Wellington Nth IF22	Isolated Find: Stone Artefact	Low
36-1-0724	Wellington Nth IF23	Isolated Find: Stone Artefact	Low
36-1-0723	Wellington Nth IF24	Isolated Find: Stone Artefact	Low
36-1-0722	Wellington Nth IF25	Isolated Find: Stone Artefact	Low
36-1-0721	Wellington Nth IF26	Isolated Find: Stone Artefact	Low

AHIMS #	Site Name	Site Type	Local Archaeological Significance (ACHAR NGH 2018)
36-1-0720	Wellington Nth IF27	Isolated Find: Stone Artefact	Low
36-1-0719	Wellington Nth IF28	Isolated Find: Stone Artefact	Low
36-6-0203	Wellington Nth IF 29	Isolated Find: Stone Artefact	Low
36-6-0202	Wellington Nth IF 30	Isolated Find: Stone Artefact	Low
Not submitted to AHIMS as possible scarred tree. Approach discussed with RAPs onsite.	Wellington Nth ST1	Scarred Tree	Low
Not submitted to AHIMS as possible scarred tree. Approach discussed with RAPs onsite.	Wellington Nth ST2	Scarred Tree	Low

6.2 Historical (non-Aboriginal) Cultural Heritage

6.2.1 Noonee Nyrang Homestead

The Noonee Nyrang Homestead is listed as Item No. I11 on the LEP, located at 6444 Goolma Road, Bodangora (Lot 84, Deposited Plan 2987). Council manage a heritage inventory (State Heritage Inventory) database for heritage items listed on the Wellington LEP. The Noonee Nyrang Homestead State Heritage Inventory (SHI) heritage item ID is 2640142. The SHI inventory citation for the place includes an assessment of the significance of the place together with a statement of significance as presented in **Table 6.2**.

Table 6.2 State Heritage Inventory listing for the Noonee Nyrang Homestead (NGH 2019a)

SHI #2640142.	Noonee Nyrang Homestead State Heritage Inventory (SHI) listing
Physical Description	<p>The house was built about 1894 of locally quarried bluestone, random cut and rough hewn, tuckpointed with coloured mortar to give the appearance of even blocks. The high pitched roof is hipped with timber detailing and finials and five tall chimneys. The bull-nosed verandah roof is supported by timber posts with wrought iron brackets and panels.</p> <p>All interior joinery is cypress pine with white box doorsteps 7 panelled cedar doors. Ceilings are pressed metal and all the light fittings are original. Servant's call bells operated by battery are in place in the kitchen. The stone fence surrounding the house and native garden was built with stone from the underground tank excavation.</p> <p>The unusual garden sheds are circular corrugated iron. The buggy shed, stables and stallion yards are dropped log construction. The large and imposing stone barn possibly predates the house. The rafters in the barn are unmilled timber logs.</p>
Historical Notes of Provenance	<p>When Nanima Estate (known as "Towri Great Farm") was subdivided and auctioned in 1893 by Mrs C.H.R. Barton after the death of Mr C.H.R. Barton, Robert M. Smith the manager of "Towri" bought a portion which he called Nyrang.</p> <p>Nyrang was held by the Smith family until purchased by Mr and Mrs Keith Holmes in 1975 and renamed Noonee Nyrang.</p> <p>Noonee Nyrang is a historic part of the Wellington district being built in a period of development and expansion.</p>
Assessment of significance	<p>Criteria a): Historically of importance as the home built for Mr W.G Smith who was prominent in the advances and development of agriculture during the 19th and early 20th Century</p> <p>Criteria c): Built of locally quarried bluestone, random cut and rough hewn, Noonee Nyrang is an excellent example of a home built with Federation influence.</p> <p>The outhouses are of especial importance: the drop log buggy shed, stables and stallion yard and the large and imposing stone barn which predates the house</p>
Statement of Significance	<p>Historically of importance as the home built for Mr W.G Smith who was prominent in the advances and development of agriculture during the 19th and early 20th Century the residence is built of locally quarried bluestone, random cut and rough hewn and therefore Noonee Nyrang is an excellent example of a home built with Federation influence with local heritage significance.</p> <p>The outhouses are of especial importance: the drop log buggy shed, stables and stallion yard and the large and imposing stone barn which predates the house.</p>

6.2.2 Other Heritage Items

Council was provided with the information and given the opportunity to assess whether the survey marker tree, stone trough and culvert identified during the field surveys and the SCS Wellington facility should be included in their LEP listing as heritage items. NGH was advised by Council that these items hold no heritage significance at a local level and will not be included in the LEP as items of heritage significance. Accordingly, the survey marker tree, stone trough and culvert, and SCS Wellington facility hold no social, cultural, scientific, aesthetic, historic or spiritual values or associations (NGH 2019a).

7.0 Management Strategies

This section provides detailed management strategies to be applied to the development in accordance with the development consent (SSD8895).

These management strategies are also developed with reference to the results of the Aboriginal and historical (non-Aboriginal) surveys of the development area, the cultural and archaeological significance of the sites identified, and the assessment of potential impacts previously undertaken by NHG Environmental as part of their ACHAR (2018) and Historical Archaeological Assessment (2019). These management strategies will be provided in the draft HMP for review by the registered Aboriginal parties.

LSbp confirms that the HMP will be implemented following the Planning Secretary's approval.

A consolidated set of Aboriginal Cultural Heritage and Historic Heritage mitigation strategies for the development (including commitments for each development phase, responsibilities, timing and records) is provided in Appendix 4 of this HMP.

The implementation of these strategies, prior to early works is the responsibility of the LSbp Development Principal. The implementation of these strategies, during construction (early and main works) is the responsibility of the Engineer, Procurement & Construction (EPC) Site Manager and Health, Safety and Environment (HSE) Coordinator.

7.1 Aboriginal Heritage Management

A combined total of nine new artefact scatters, 30 isolated stone artefacts, and two possible scarred trees were identified within the development area. All items were assessed to be of low significance, except for three items which have low-moderate significance (Wellington North AFT2, AFT5 and IF17) and one of moderate significance (Wellington North AFT9).

Based on the land use history, an appraisal of the landscape, soil, level of disturbance and the results from the field survey, it was concluded by NGH (2018) that there was negligible potential for the presence of intact subsurface deposits with high densities of objects or cultural material within the development area. However, it was acknowledged that additional surface stone artefacts (comparable to those identified during the survey) could occur across the development area.

7.1.1 Mitigation Measures

The development will impact all nine artefact scatters and 27 out of the 30 isolated finds. The resulting impact to the associated scientific values of these artefacts and sites was assessed as 'Low' based on their significance and potential to contribute further information to the archaeological record of the region. It should be noted that the site Wellington Nth AFT9 will only be partially impacted. Specific measures have been developed as provided below to mitigate the approved impacts with reference to the type of site, site features, location and extent of impact. These measures were discussed and agreed with Aboriginal party representatives during the field work programs (NGH 2018).

7.1.1.1 Consultation with Registered Aboriginal Parties

Consultation will remain ongoing with the registered Aboriginal parties as detailed throughout this document and in accordance with the provisions of this HMP and the approval consent for the development (SSD 8895). This HMP has been provided to the relevant registered Aboriginal parties for review and approval.

In all subsequent sections where reference is made to the involvement of Aboriginal party representatives in mitigation and management works, LSbp will provide the opportunity for Aboriginal party representatives to participate in these works. However, in instances where Aboriginal parties have accepted the opportunity to undertake the works but do not attend, the works may proceed.

7.1.1.2 Avoidance and Protection

Of the sites identified by NGH, the development footprint has been designed with exclusion zones to avoid impacting three of the isolated finds and both scarred trees (refer **Table 7.1** below). A minimum 10 m buffer is to be fenced around each scarred tree to protect the tree canopy and root system and around the non-impacted portion of site Wellington Nth AFT9 (NGH 2018). Fencing can be of a temporary nature and must remain for the duration of the construction period, and during decommissioning. Standard high visibility fencing mesh should be used and each area should include signage identifying it as a 'No-Go' zone.

Marking out of the appropriate buffer zones for two scarred trees, three isolated finds and the non-impacted portion of Wellington Nth AFT9 should be undertaken by an archaeologist and two Aboriginal party representatives.

Table 7.1 NGH Identified Sites to be Avoided and Protected

AHIMS #	Site Name	Site Type	Mitigation Measure
36-4-0167	Wellington Nth IF11	Isolated Find: Stone Artefact	Avoidance and Fencing with a 5 m Buffer
36-4-0733	Wellington Nth IF13	Isolated Find: Stone Artefact	Avoidance and Fencing with a 5 m Buffer
36-4-0730	Wellington Nth IF17	Isolated Find: Stone Artefact	Avoidance and Fencing with a 5 m Buffer
36-1-0740	Wellington Nth AFT9	Low density artefact scatter	Fencing around portion not subject to disturbance, including a 10 m Buffer
Not submitted to AHIMS as possible scarred tree. Approach discussed with RAPs onsite.	Wellington Nth ST 1	Scarred Tree	Avoidance and Fencing with a 10 m buffer
Not submitted to AHIMS as possible scarred tree. Approach discussed with RAPs onsite.	Wellington Nth ST2	Scarred Tree	Avoidance and Fencing with a 10 m buffer

7.1.1.3 Archaeological Salvage (Surface Collection)

Collection of surface artefacts will be undertaken at all nine artefact scatter sites, and all 27 isolated finds will be collected (refer **Table 7.2** and **Figure 7.1**) prior to the commencement of ground disturbance works.

The surface collection will be undertaken in accordance with the following methodology:

- The distribution of artefacts will be assessed and where appropriate, artefacts may be grouped for the purposes of recording and analysis.
- All artefacts will be flagged and photographed and recorded in accordance with the *Code of Practice for Archaeological Investigation of Aboriginal Objects in NSW* (DECCW, 2010). The following features will be recorded as a minimum:
 - Artefact class
 - Raw material
 - Maximum dimension (with additional width and thickness measurements for complete artefacts)
 - For retouched artefacts – location and type of retouch
 - Presence of use-wear and/or residues
 - Photographic recording of diagnostic and selected artefacts
- The location of each scatter (including individual loci within larger scatters) or isolated artefact will be recorded and mapped using a hand-held 12 channel GPS (easting and northing).
- All collected material will be bagged separately in zip-lock bags, and each tagged with a label including a unique identifier number that allows for specific identification of the artefact or group of artefacts (where relevant) with reference to its collection location.
- AHIMS Aboriginal Site Impact Recording Forms will be completed for each salvaged site. Each form will then be lodged with Heritage NSW on the AHIMS database.

Table 7.2 Items subject to archaeological salvage (surface collection)

AHIMS #	Site Name	Site Type	Mitigation Measure
36-4-0173	Wellington Nth AFT1	Low density artefact scatter	Collection and Reburial
36-4-0174	Wellington Nth AFT2	Low density artefact scatter	Collection and Reburial
36-4-0175	Wellington Nth AFT3	Low density artefact scatter	Collection and Reburial
36-1-0735	Wellington Nth AFT4	Low density artefact scatter	Collection and Reburial
36-1-0736	Wellington Nth AFT5	Low density artefact scatter	Collection and Reburial
36-1-0737	Wellington Nth AFT6	Low density artefact scatter	Collection and Reburial
36-1-0738	Wellington Nth AFT7	Low density artefact scatter	Collection and Reburial
36-1-0739	Wellington Nth AFT8	Low density artefact scatter	Collection and Reburial
36-1-0740	Wellington Nth AFT9	Low density artefact scatter	Collection and Reburial of the portion of the site to be impacted
36-4-0176	Wellington Nth IF1	Isolated Find: Stone Artefact	Collection and Reburial
36-4-0177	Wellington Nth IF2	Isolated Find: Stone Artefact	Collection and Reburial

AHIMS #	Site Name	Site Type	Mitigation Measure
36-4-0178	Wellington Nth IF3	Isolated Find: Stone Artefact	Collection and Reburial
36-4-0179	Wellington Nth IF4	Isolated Find: Stone Artefact	Collection and Reburial
36-4-0180	Wellington Nth IF5	Isolated Find: Stone Artefact	Collection and Reburial
36-4-0171	Wellington Nth IF6	Isolated Find: Stone Artefact	Collection and Reburial
36-4-0172	Wellington Nth IF7	Isolated Find: Stone Artefact	Collection and Reburial
36-4-0170	Wellington Nth IF8	Isolated Find: Stone Artefact	Collection and Reburial
36-4-0169	Wellington Nth IF9	Isolated Find: Stone Artefact	Collection and Reburial
36-4-0168	Wellington Nth IF10	Isolated Find: Stone Artefact	Collection and Reburial
36-4-0166	Wellington Nth IF12	Isolated Find: Stone Artefact	Collection and Reburial
36-1-734	Wellington Nth IF14	Isolated Find: Stone Artefact	Collection and Reburial
36-1-0732	Wellington Nth IF15	Isolated Find: Stone Artefact	Collection and Reburial
36-1-0731	Wellington Nth IF16	Isolated Find: Stone Artefact	Collection and Reburial
36-1-0729	Wellington Nth IF18	Isolated Find: Stone Artefact	Collection and Reburial
36-1-0728	Wellington Nth IF19	Isolated Find: Stone Artefact	Collection and Reburial
36-1-0727	Wellington Nth IF20	Isolated Find: Stone Artefact	Collection and Reburial
36-1-0726	Wellington Nth IF21	Isolated Find: Stone Artefact	Collection and Reburial
36-1-0725	Wellington Nth IF22	Isolated Find: Stone Artefact	Collection and Reburial
36-1-0724	Wellington Nth IF23	Isolated Find: Stone Artefact	Collection and Reburial
36-1-0723	Wellington Nth IF24	Isolated Find: Stone Artefact	Collection and Reburial
36-1-0722	Wellington Nth IF25	Isolated Find: Stone Artefact	Collection and Reburial
36-1-721	Wellington Nth IF26	Isolated Find: Stone Artefact	Collection and Reburial
36-1-720	Wellington Nth IF27	Isolated Find: Stone Artefact	Collection and Reburial
36-1-0719	Wellington Nth IF28	Isolated Find: Stone Artefact	Collection and Reburial
36-6-0203	Wellington Nth IF 29 (Wellington North SF Additional Area IF1)	Isolated Find: Stone Artefact	Collection and Reburial
36-6-0202	Wellington Nth IF 30 (Wellington North SF Additional Area IF2)	Isolated Find: Stone Artefact	Collection and Reburial

All collected artefacts will be moved to a safe area within the property outside footprint of the construction works and reburied. The reburial location for the artefacts will be discussed and agreed with Aboriginal party representatives prior to being undertaken. The Aboriginal community also requested that a Cultural Smoking Ceremony take place to cleanse the salvaged artefacts and the reburial location.

The collection, relocation and reburial of the artefacts should be undertaken by a suitably qualified archaeologist with representatives of the registered Aboriginal parties present and in accordance with Requirement 26 of the *Code of practice for Archaeological Investigation of Aboriginal Objects in New South Wales* (DECCW, 2010). An additional site card will need to be completed once the artefacts are moved to record their new location on the AHIMS database.

7.1.1.4 Reporting on outcomes of surface collection

The surface collection works to be undertaken under this HMP will result in the recovery of archaeological material, namely stone artefacts. The analysis and interpretation of the results of the surface collection works is an integral component of this process. Following completion or conclusion of the surface collection works, the following will be completed:

- A short report will be compiled that presents the findings of the activities and will be completed in accordance with the *Guide to Investigating, Assessing and Reporting on Aboriginal Cultural Heritage in NSW* (OEH, 2011) and the *Code of practice for Archaeological Investigation of Aboriginal Objects in New South Wales* (DECCW, 2010) and will include:
 - A description of the results of the activities including general environmental information and development site context.
 - The results of the artefact recording and analysis of salvaged archaeological material including implications for further contributions to the broader archaeological record of the region.
 - Details of the new location for the collected artefacts and reburial process.

The report will be provided as a draft to the registered Aboriginal parties for review and comment. The finalised report will then be provided to Heritage NSW.

7.1.1.5 Monitoring Program

The aim of the monitoring program and reporting framework is to assess the effectiveness of the management plan and mitigation strategies and to identify whether there is a risk of harm to the identified Aboriginal or historical cultural heritage sites as a result of the development activities and to identify appropriate mitigation strategies, if required.

Monitoring Protocols for Aboriginal Sites Remaining In-Situ

A program of monitoring for those Aboriginal sites that will remain in-situ and not be impacted by the development works (refer **Table 7.1** above) will be undertaken. The purpose of this exercise is to document the condition of the site immediately before ground-breaking activities and construction take place to record their condition at the start of the works associated with the development and create a baseline from which any changes to their material components or condition can be gauged and whether these impacts or changes are related to construction activities or natural processes. Appropriate management measures can then be introduced if required.

Monitoring should be undertaken by the EPC HSE Coordinator and the opportunity to participate in monitoring should be provided to the relevant registered Aboriginal party representatives. The monitoring program needs to record the condition of each site prior to any ground disturbing works taking place (baseline check) and the condition of the site afterwards (post activity condition check).

Baseline Recording

The methodology for baseline recording (prior to the occurrence of ground disturbing activities in the vicinity of the site) involves documentation of site condition with the minimum information to be recorded comprising verification of the location of the site (including GPS coordinates) and content, provision of a

site plan (where relevant), completion of detailed digital photography and field notes documenting general condition to enable any future changes to be assessed. It is anticipated that baseline recording would be conducted concurrently with site protection works, as described in **Section 7.1.1.3**.

Ongoing Monitoring

There is no statutory requirement to undertake monitoring of the identified heritage sites however, Registered Aboriginal Parties (RAP) typically appreciate the opportunity to check and confirm that protective measures remain in place during project works.

Monitoring can be undertaken periodically as agreed with the relevant RAP via a vehicle survey with project/site staff and a RAP representative. Condition checks should involve evaluation of whether there has been any change to the site or its components, and if so information about the nature of changes should be recorded together with updated photographs. When undertaken, a record of the monitoring event should be created and retained with project documentation for completeness and provided to the registered Aboriginal parties and Heritage NSW.

If either direct or indirect harm to the site as a result of activities associated with the development is identified during monitoring, the activities resulting in the harm should cease in the vicinity of the site until appropriate mitigation measures to protect the site (such as additional fencing) can be implemented. A suitably qualified archaeologist and the registered Aboriginal parties should be consulted to develop appropriate additional mitigation and management measures in relation to the identified impact. A memorandum documenting the impact and including recommendations regarding additional mitigation/management of impact should be provided to the registered Aboriginal parties and Heritage NSW.

7.1.2 Identification of Previously Unknown Aboriginal Cultural Heritage Sites

During the development, it is possible that unexpected Aboriginal objects or sites or human skeletal remains may be discovered. Should this occur over the course of activities within the development area the following procedures will be applied. Explanations of these procedures will be included in site inductions as per the training requirements discussed in **Section 7.3** of this HMP.

7.1.2.1 Unexpected Finds

This procedure is applicable to all activities conducted by any personnel during the development that have the potential to uncover surface or sub-surface Aboriginal objects. Unexpected finds do not include objects/sites that have been previously identified during an archaeological assessment and are covered by relevant approvals.

Procedure

- The person who discovers or suspects they have discovered a potential Aboriginal object(s) during the proposed works will immediately notify the person in charge of the activity.
- The EPC Site Manager/EPC HSE must then suspend any relevant works at the location of the discovery and within 10 m of the extent of the suspected object(s). In the case of multiple objects, the 10 m area applies from the outermost of the cluster of objects.

- An area of 10 m radius is to be cordoned off by temporary fencing around the suspected Aboriginal heritage object(s).
- The EPC Site Manager/EPC HSE will take photos of the suspected Aboriginal heritage object(s) and send to LSbp, who will pass it on to a suitably qualified archaeologist who will provide preliminary advice on the find. Information about the location and condition of the site should also be provided. The archaeologist will then contact the relevant Aboriginal Group to advise them of the potential find and provide a copy of the photos and relevant information about the find.
- The Aboriginal heritage object or material must not be moved or disturbed until preliminary assessment has been undertaken by a cultural heritage specialist and written clearance of the site provided.
- Based on the results of the preliminary advice and identified significance of the suspected Aboriginal object(s), the following steps should be followed:
 - **Not an Aboriginal heritage item:** the archaeologist will provide written clearance of the site and works are able to recommence.
 - **Further confirmation required:** the archaeologist and representatives of the registered Aboriginal parties will be provided with the opportunity to inspect the object(s) to confirm its significance.
 - **Confirmed Aboriginal object(s):** If it is an Aboriginal item and further assessment is required, notification will be made to all relevant registered Aboriginal parties and Heritage NSW to provide information about the newly identified site and determine an appropriate management strategy.

7.1.2.2 Unexpected Finds (Suspected Human Skeletal Remains)

This procedure details the actions to be taken when suspected human skeletal remains are found during development activities. This information will be included in site inductions as per the training requirements discussed in **Section 7.3** of this HMP.

This procedure is applicable to all activities conducted by any personnel during the development that have the potential to uncover suspected human skeletal remains. All human skeletal remains (both Aboriginal and non-Aboriginal) are subject to statutory controls and protection.

Procedure

- When suspected human skeletal remains are exposed or uncovered, all work is to cease immediately in the near vicinity of the find location.
- An area of 20 m radius is to be cordoned off by temporary fencing around the outer extent of the exposed suspected human skeletal remains site.
- The EPC Site Manager / EPC HSE is to notify the New South Wales Police and the State Coroner's Office immediately.
- A suitably qualified person should inspect the remains and make a determination of whether the remains are human, and if so, the likely ancestry (Aboriginal or non-Aboriginal) and the antiquity (pre-contact, historical or forensic)
 - If the remains are forensic, the area is deemed a crime scene.

- If the remains are identified as Aboriginal, the site is to be secured and Heritage NSW and all registered Aboriginal parties are to be notified. Under Section 20 (1) of the *Aboriginal & Torres Strait Islander Heritage Protection Act 1986*, the Department of Agriculture, Water and Environment (DAWE) must also be notified.
- If the remains are non-Aboriginal (historical) remains, the site is to be secured and Heritage NSW is to be contacted.
- The above process functions only to appropriately identify the remains and secure the site. From this time, the management of the remains is to be determined through liaison with the appropriate stakeholders (including the NSW Police Force, forensic anthropologist, Heritage NSW and the registered Aboriginal parties).
- No works will be recommenced at the location of the remains until such time as the required management actions have been undertaken and written consent to recommence has been provided by the appropriate government authority (either NSW Police or Heritage NSW depending on the nature of the remains).

7.2 Historical Heritage Management

There is one historical heritage site of local significance listed on the Wellington LEP 2012 located within the development area: the Noonee Nyrang Homestead (LEP Item I11 / SHI #2640142).

7.2.1 Mitigation Measures

The following measures are to be implemented to ensure the protection of the Noonee Nyrang Homestead:

- All personal and contractors associated with the development made aware the location of the Noonee Nyrang Homestead and heritage status.
- The existing outbuildings and stone shed around the Noonee Nyrang Homestead should be maintained and not altered.
- An exclusion zone around the Noonee Nyrang Homestead and the SCS Wellington facility has been included in the development design to prevent any harm or impact from occurring to the homestead and SCS buildings, or any associated archaeological deposits. This exclusion zone should be explained during the heritage inductions and toolbox talks and all contractors and personal associated with the development made aware of it.

7.2.1.1 Other Heritage Items

The development will produce unavoidable impacts to both the stone trough and culvert, during which the unexpected finds protocol outlined in **Section 7.2.2** below should be followed in the instance of discovery of any other/additional potential heritage items.

NGH was advised by Council that the survey marker tree holds no heritage significance at a local level and will not be included in the LEP as an item of significance. Further, the DPIE April 2021 SSD Assessment Report stated that “*Heritage NSW and Council did not raise concerns regarding any impacts to the Noonee Nyrang Homestead and removal of the marker tree, stone trough and culvert*”. Based on the solar farm

design referenced in the preparation of this HMP the European survey marker tree will be impacted by the development and this is permissible with respect to the development consent. If future potential to avoid impacts to the European survey mark is identified, an exclusion zone could be established around the tree and the tree fenced with a buffer of 10 m, refer to **Figure 7.1** below.

This mitigation is not required under the development consent but could be implemented to avoid impacts, where reasonably practicable to do so.

The buildings associated with the SCS Wellington facility will not be impacted by the development as they are in the exclusion zone. The SCS Wellington facility should be avoided and all personal and contractors associated with the development made aware of its location. Should the scope of the development change so that impact is likely to occur, it is recommended consultation be undertaken with the Council to identify appropriate management and/or mitigation measures, if required.

7.2.2 Identification of Previously Unknown Historical Heritage Sites

An unexpected finds protocol will be followed at all stages of development to ensure that any unexpected historical finds, features or subsurface deposits are correctly managed and assessed should they be identified.

7.2.2.1 Procedure

- The person who discovers or suspects they have discovered a potential historical heritage item during the proposed works will immediately notify the person in charge of the activity.
- Works in the immediate vicinity of the item(s) will cease and the area around the item(s) will be cordoned off with temporary fencing.
- An area of 10m radius is to be cordoned off by temporary fencing around the suspected heritage item(s). In the case of multiple items, the 5 m area applies from the outermost of the cluster of items. The heritage item must not be moved or disturbed until preliminary assessment has been undertaken by a cultural heritage consultant.
- The EPC Site Manager/EPC HSE will then inform LSbp, whom will contact a suitably qualified cultural heritage consultant to evaluate the potential historical heritage item. Information about the location and condition of the site should also be provided. An inspection of the item(s) by the heritage consultant may be required to confirm the significance of the item(s).
- Where the item(s) are identified as having local or higher significance, the EPC Site Manager/EPC HSE will inform LSbp, whom will contact Heritage NSW to provide information about the newly identified site/material and determine an appropriate management strategy. Should it be determined that the material identified does not hold any significance, works may proceed and there are no further requirements.

7.3 Training Requirements

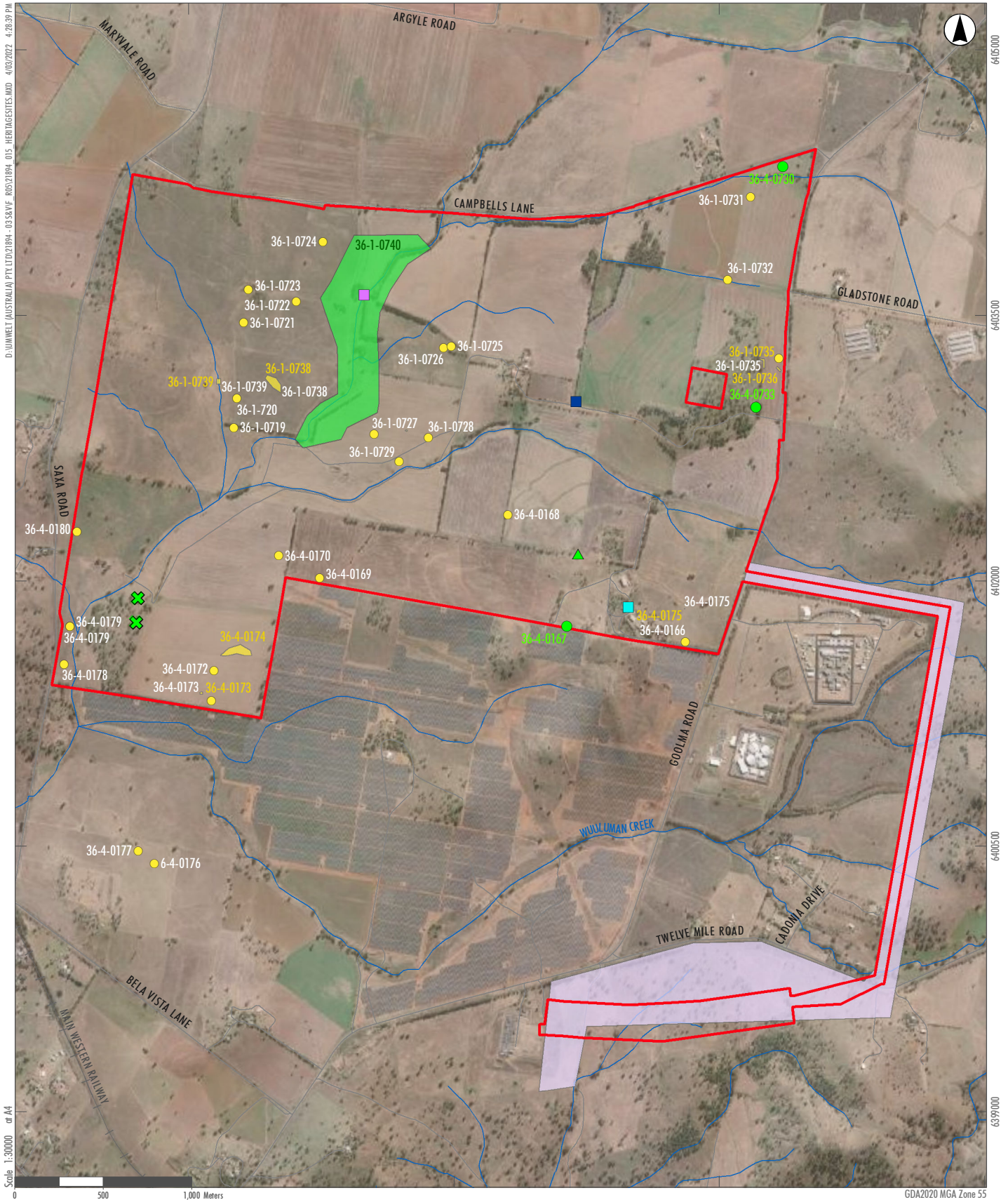
All site personnel including employees, subcontractors and visitors are to receive Aboriginal and historical cultural heritage awareness training during site inductions and toolbox talks. The training package will be developed in consultation with the registered Aboriginal parties and it is the responsibility of the EPC HSE

to do so. Further details regarding staff induction and training are also outlined in the EMS for the development. This training will assist to ensure that all personnel understand the importance of heritage issues and measures that have/will be implemented.

Specifically, the Aboriginal and historical cultural heritage awareness training should cover:

- Roles and responsibilities of personnel regarding protection of Aboriginal and historical cultural heritage.
- The location and types of heritage items found within the development area and surrounding areas.
- The means of identifying heritage items.
- Procedures to be followed in the event that unexpected finds are discovered.
- Procedures to be followed in the event that suspected human skeletal remains are discovered.

Records of all personnel undertaking the heritage awareness training will be maintained, including the content, date and name of trainer(s).



Legend

Development Site

Road

Railway Line

Drainage Line

Transmission Line Area

Indicative Location of Heritage Items

Soil Conservation Research Facilities

Stone Culvert

Stone Trough

Aboriginal Sites to be Salvaged

Isolated Finds

Artefact Scatter

Aboriginal Sites to be Fenced

European Survey Marker Tree

Isolated Finds

Possible Scarred Tree

Artefact Scatter

FIGURE 7.1

Heritage Sites within the Development Area to be Fenced and Salvaged

8.0 Review and Improvement

Condition 2 of Schedule 4 of the development consent states the following:

“The Applicant must:

(a) update the strategies, plans or programs required under this consent to the satisfaction of the Planning Secretary prior to carrying out any upgrading or decommissioning activities on site; and

(b) review and, if necessary, revise the strategies, plans or programs required under this consent to the satisfaction of the Planning Secretary within 1 month of:

- *the submission of an incident notification under condition 7 of Schedule 4;*
- *the submission of an audit report under condition 11 or 13 of Schedule 4; or*
- *any modification to the conditions of this consent.”*

Review of this HMP will be undertaken in accordance with Condition 2 of Schedule 4 of the development consent.

This HMP will be updated when deemed necessary and reviewed annually for the period of early works and then main works (i.e. the total construction of the development), to ensure the document remains current. The HMP would be revisited prior to decommissioning, as deemed necessary at the time. Any information regarding new sites recorded within the development area will be incorporated into the framework and the site’s significance will be evaluated. In addition, where strategies incorporated into this HMP require update or alteration based on outcomes of works undertaken, new developments on site or changes to the scope of the current development, this information will be considered as part of the review. The review would be conducted in consultation with the registered Aboriginal parties.

Review and improvement of this HMP will be designed to:

- Identify areas of opportunity for improvement when implementing the development’s heritage mitigation/management measures outlined in **Section 7.0**.
- Determine the cause or causes of non-conformances with the development consent and the heritage mitigation/management measures outlined in **Section 7.0**.
- Develop and implement a plan of corrective and preventative action to address any non-conformances and/or deficiencies with the development consent and the heritage mitigation/management measures outlined in **Section 7.0**.
- Verify the effectiveness of the corrective and preventative actions.
- Document any changes in procedures resulting from the improvement process and communicate these changes with all the responsible parties that are implementing this HMP.

This HMP may need to be revised if the development’s scope of works, or work methods, change, if the work methods are found to be ineffective, or if directed by the LSbp Principal. This will occur as needed and in accordance with the process outlined in the EMS. A copy of the updated HMP and changes will be distributed to all relevant stakeholders in accordance with the approved document control procedure identified in the EMS.

9.0 Closing

This HMP has been produced to address Schedule 3, Condition 22 and Condition 23 of State Significant development Consent 8895 issued for the Wellington North Solar Farm development.

The development area contains several Aboriginal cultural heritage sites and a historic homestead site listed as locally significant on NSW State Heritage Inventory (#2640142) and the Wellington LEP (Item I11).

Accordingly, a series of risk control measures and procedures has been outlined in **Section 7.0** in response to both Aboriginal and historical archaeological sites, either identified or as yet identified. Training and provision for review of the management and mitigation framework has also been made for the overall period of construction of the development to ensure all persons associated with the development remain aware of heritage issues and that this HMP remains current.

Whilst not expected, should any previously unidentified Aboriginal sites be encountered, the nominated responsible parties (refer **Section 7.0** and **Appendix 4**) will follow the procedures outlined in **Section 7.1.2** of this HMP.

10.0 References

Marquis-Kyle, P. and Walker, M., 1994. The Illustrated Burra Charter: Making good decisions about the care of important places. Sydney: Australian Heritage Commission.

NGH Environmental (2018). Wellington North Solar Farm Aboriginal Cultural Heritage Assessment Report, report prepared for Wellington North Solar Farm Pty Limited

NGH Environmental (2019). Wellington North Solar Farm Addendum Aboriginal Cultural Heritage Assessment Report, report prepared for Wellington North Solar Farm Pty Limited

NGH Environmental (2019a). Wellington North Solar Plant Historical Archaeological Assessment Report, report prepared for AGL Energy.

NSW Department of Planning, Industry and Environment (2021). Wellington North Solar Farm – State Significant Development Assessment 8895. Accessed from: dpie.nsw.gov.au

NSW Heritage Office (2001). Assessing Heritage Significance. NSW Heritage Manual 2.

OEH (1996). Archaeological assessments: archaeological assessment guidelines

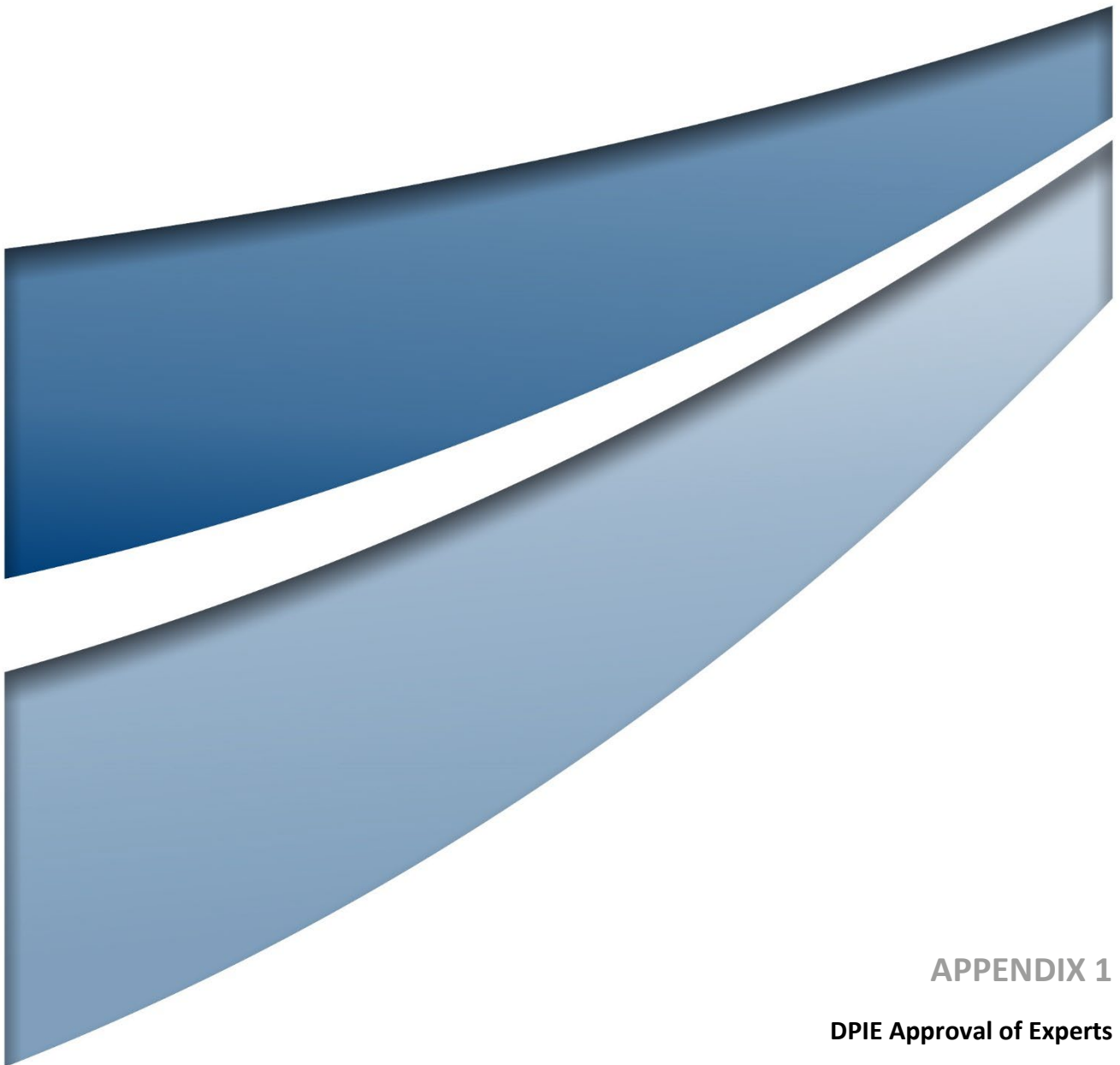
OEH (2009). Assessing Significance for Historical Archaeological Sites and 'Relics'.

OEH (2010a). Code of Practice for Archaeological Investigation of Aboriginal Objects in New South Wales.

OEH (2010b). Aboriginal Cultural Heritage Consultation Requirements for Proponents 2010.

OEH (2010c). Historical Archaeology Code of Practice.

OEH (2011). Guide to Investigating, Assessing and Reporting on Aboriginal Cultural Heritage in NSW



APPENDIX 1

DPIE Approval of Experts

Diana Mitchell
Principal Environmental Planner
Wellington North Solar Farm Pty Limited
717 Bourke Street
Docklands VIC 3008

20/01/2022

Dear Ms Mitchell

**Wellington North Solar Farm (SSD-8895)
Heritage Management Plan - Endorsement of persons to prepare plan**

I refer to your request dated 10 January 2022 for the Secretary's endorsement of suitably qualified persons to prepare the Heritage Management Plan for the Wellington North Solar Farm (SSD-8895) in accordance with condition 23(a) of Schedule 3.

The Department has reviewed the nominations and information you have provided and is satisfied that these experts are suitably qualified and experienced. Consequently, I can advise that the Secretary approves the appointment of Nicola Roche, Ildike Piercy, Andrew Crisp and Tim Adams of Umwelt to prepare the Heritage Management Plan.

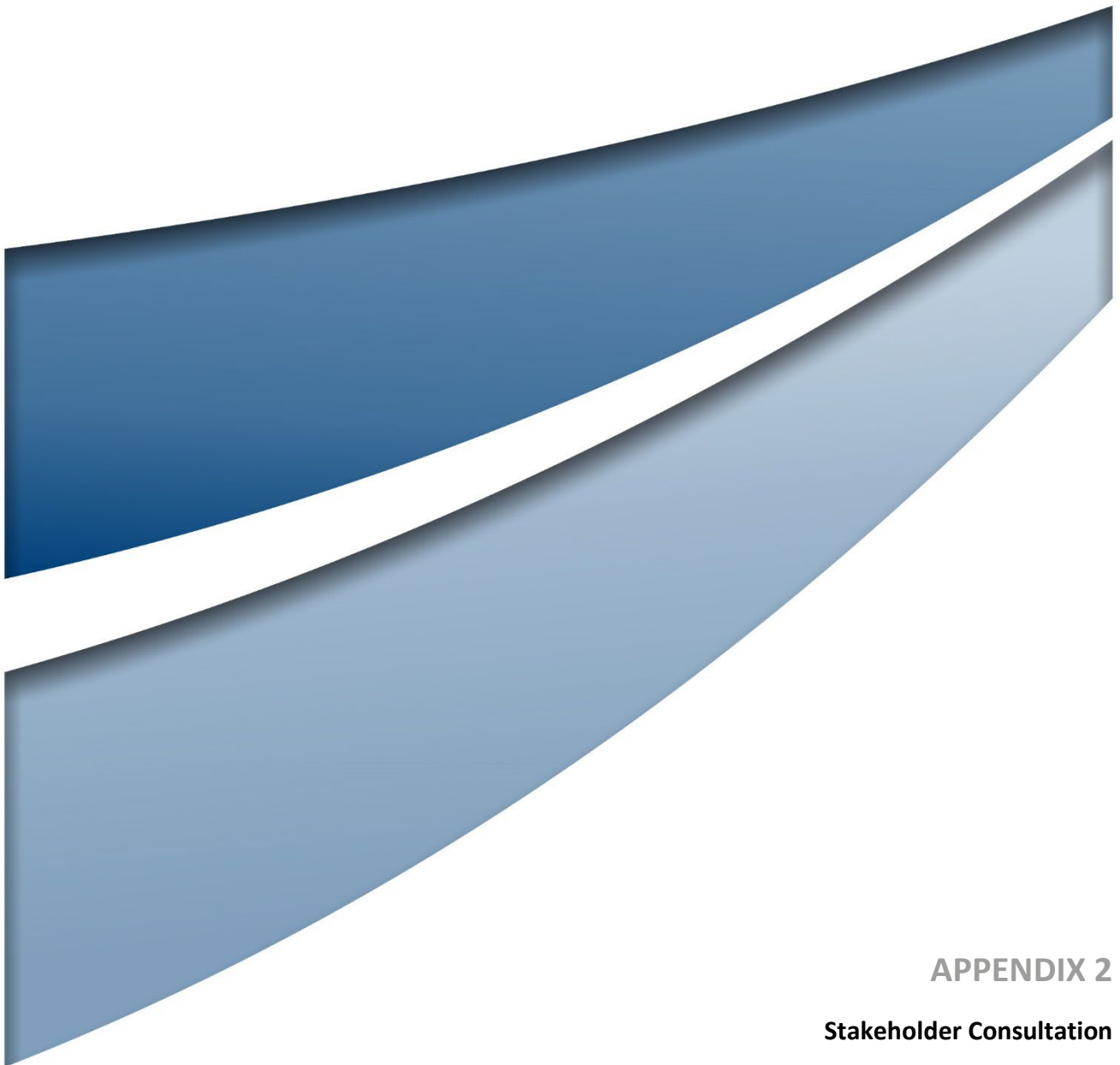
If you wish to discuss the matter further, please contact Wayne Jones on (02) 6575 3406.

Yours sincerely



Nicole Brewer
Director
Energy Assessments

As nominee of the Secretary



APPENDIX 2

Stakeholder Consultation

Stakeholder Consultation

Agency and other stakeholder consultation has occurred as per the development consent for plans and strategy prepared under the LSbp Integrated Management System. Preparation of this HMP occurred in consultation with Heritage NSW, Aboriginal Stakeholders and Council. In addition, HMP feedback from DPE was received in June 2022.

Consultation: Heritage NSW

Umwelt is aware of general preferences regarding plan content and structure, and did not consult with Heritage NSW during the preparation of this HMP. The HMP was however submitted to Heritage NSW for review on 15 March 2022 and correspondence received 25 March 2022. The Heritage NSW correspondence, and where this feedback has been addressed in this HMP, is documented in the table below.

Heritage NSW Consultation

ID	Date Sent	Contact / Format / Date Received	Comment	Response
1	15 March 2022	Nicole Davies Manager Assessments, Heritage NSW, Community Engagement, Department of Premier and Cabinet Email correspondence Received 25 March 2022	Thank you for your email. I have done a brief review this morning and the proposed HMP does appear to be adequate and appropriate in relation to the proposed Wellington North Solar Farm.	Acknowledged and recorded in the HMP

Consultation: Aboriginal Stakeholders

Consultation with Aboriginal parties regarding the development was undertaken previously during the preparation of the ACHAR (NGH 2018) and Addendum ACHAR (NHG 2019) in accordance with clause 80C (now Division 2, Clause 60) of the *National Parks and Wildlife Regulation 2010* and the *Aboriginal Cultural Heritage Consultation Requirements for Proponents* (DECCW 2010a) (the Consultation Requirements). All consultation undertaken for the Wellington North solar farm ACHAR is clearly outlined and documented in the original report (NGH 2018). Consultation with the Aboriginal community was continuous throughout the project.

Consultation regarding this HMP is a continuation of this process in accordance with the development consent. On this basis, the registered Aboriginal parties (RAPs) to be consulted regarding this HMP are the same parties consulted regarding the ACHAR; namely

- Wellington Local Aboriginal Land Council
- Wellington Valley Wiradjuri Aboriginal Corporation
- Gallangabang Aboriginal Corporation
- Binjang Wellington Wiradjuri Heritage Survey Notification.

A copy of the draft HMP was provided to all RAPs with an invitation to review and comment on all aspects of the document. Any comments received from the RAPs in response to the draft HMP are documented in the tables below and the HMP content updated where necessary

Wellington Local Aboriginal Land Council Consultation (WLALC)

ID	Date Sent	Contact / Format / Date Received	Comment	Response
1	11 March 2022	Wellingtonlalc@yahoo.com Email correspondence No Response received	No Response received	Recorded in the HMP
2	04 April 2022	Wellington LALC (02) 6845 2229 Phone call	No answer – phone rang out.	Recorded in the HMP

Wellington Valley Wiradjuri Aboriginal Corporation Consultation (WVWAC)

ID	Date Sent	Contact / Format / Date Received	Comment	Response
1	11 March 2022	Brad Bliss - WVWAC CEO and Contact Officer Email correspondence Received 30 March 2022	We do not object to any of the content. There is nothing controversial and the content is in keeping with the discussions held previously with NGH.	Acknowledged and recorded in the HMP
2	11 March 2022	Brad Bliss - WVWAC CEO and Contact Officer Formal Letter attached to the Email correspondence Received 30 March 2022	Wellington Valley Wiradjuri Aboriginal Corporation agree to the content as presented in the proposed Lightsource bp Wellington North Solar Farm, DRAFT Heritage Management Plan, Dated: March 2022.	Acknowledged and recorded in the HMP

Gallangabang Aboriginal Corporation Consultation (GAC)

ID	Date Sent	Contact / Format / Date Received	Comment	Response
1	11 March 2022	Brad Bliss - WVWAC CEO and Contact Officer Email correspondence Received 21 March 2022	Please note that as of 27 November 2021, I stood down as a Director of Gallangabang to remain as a member. I have already forwarded the email to the current Directors of Gallangabang for them to assess and respond.	Acknowledged and recorded in the HMP
2	21 March 2022	Diana Astin – Director and Contact Officer Melissa Chown – Director Paul Campion -GAC Secretariat Email correspondence	No Response received	Recorded in the HMP

Binjang Wellington Wiradjuri Heritage Survey Notification Consultation (BWWHS)

ID	Date Sent	Contact / Format / Date Received	Comment	Response
1	11 March 2022	Jamie Gray BWWHS Email correspondence	No Response received	Recorded in the HMP
2	04 April 2022	Jamie Gray BWWHS Email correspondence	No Response received	Recorded in the HMP

Consultation: Dubbo Regional Council (Council)

The HMP was submitted to Council for review on 11 March 2022 and correspondence received 15 March 2022. The Council correspondence, and where this feedback has been addressed in this HMP, is documented in the table below.

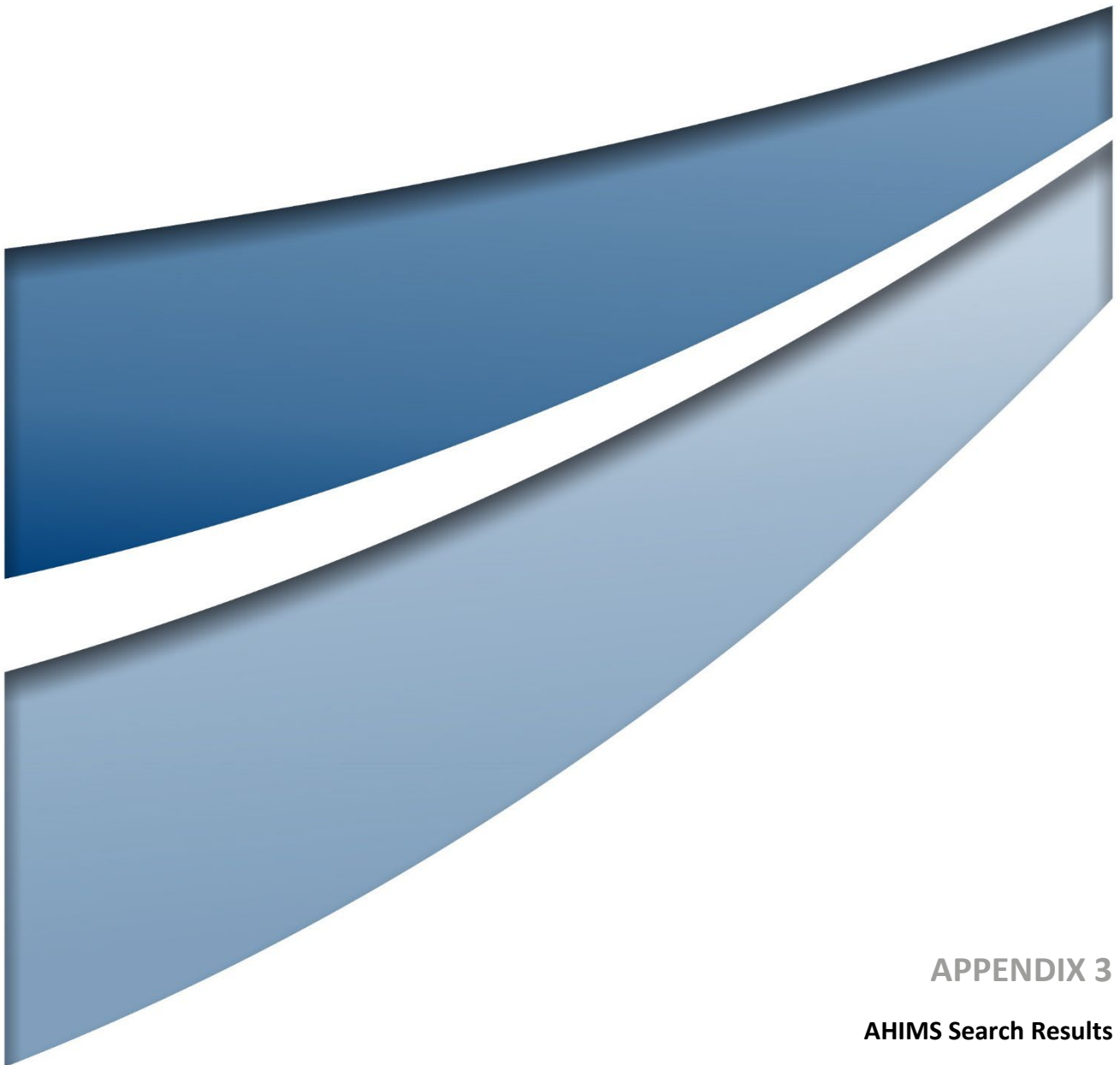
ID	Date Sent	Contact / Format / Date Received	Comment	Response
1	11 March 2022	Darryll Quigley Manager Building and Development Services Email correspondence Received 15 March 2022	I refer your email below dated 11 March 2022 regarding the development of the Wellington North Solar Farm (SSD 8895) and the Heritage Management Plan seeking Council comment. On review of the Plan, Council raises no concerns noting that the exclusion zone around Noone Homestead remains to prevent any harm or impact from occurring to the homestead and SCS buildings, or any associated archaeological deposits	Acknowledged and recorded in the HMP

Department of Planning and Environment (DPE)

The HMP was submitted to DPE and 'Planner's Comments' received requesting more information. This feedback has been addressed in this HMP, as documented in the table below.

ID	Date Sent	Contact / Format / Date Received	Comment	Response
-	-	17 June 2022	'As required under Condition 22, Schedule 3 and Appendix 3, the Applicant must ensure the development does not cause any direct or indirect impacts on the Aboriginal heritage items identified in Table 1 of Appendix 3 and salvage and relocate the item's listed in Table 2 of Appendix 3 that would be impacted to a suitable alternative location. As such, the following requires further clarification:	n/a

ID	Date Sent	Contact / Format / Date Received	Comment	Response
1	-		Aboriginal heritage item (Wellington Nth AFT9) is listed as both a site to be avoided and protected (HMP Table 7.1) and an item subject to archaeological salvage (surface collection) (HMP Table 7.2)	<p>Section 7.1.1 (Mitigation Measures) of the HMP notes that the site 'Wellington Nth AFT9' will only be partially impacted. This is why it is listed as both a site to be avoided and protected. To improve clarity two changes have been made to the HMP:</p> <ul style="list-style-type: none"> • The 'Site Type' column in Table 7.1, for site 'Wellington Nth AFT9', has now been updated to 'Low density artefact scatter'; this previously had the site type listed incorrectly as 'Isolated Find'; and • The 'Mitigation Measure' column in Table 7.2 has been updated (again for Wellington Nth AFT9) to read 'Collection and reburial of the portion of the site to be impacted'.
2	-		Both 'Wellington Nth SF Additional Area IF1' and 'Wellington Nth SF Additional Area IF2', subject to surface collection salvage is not included in HMP Table 7.2'.	<p>In the addendum ACHAR, NGH originally labelled these two sites as 'IF29' and 'IF30'. These points were also subsequently labelled as 'AHIMS 36-4-0203 – Wellington Nth SF Additional Area IF1' and 'AHIMS 36-4-0202 - Wellington North Area IF2' respectively in the AHIMS results returned for the area. For consistency with NGH's labelling we retained the as IF29 and IF30 names for them. 36-6-0203 and 36-6-0202 are in Table 7.2 of the HMP along with their original names, IF29 and IF30. They are the last two sites in the list, down the bottom of the table. To improve clarity, each one has now been updated in Table 7.2 of the HMP to include "Wellington North SF Additional Area XX" for greater clarity.</p>



APPENDIX 3

AHIMS Search Results

AHIMS Web Services (AWS)

Extensive search - Site list report

Your Ref/PO Number : 21894

Client Service ID : 652883

SiteID	SiteName	Datum	Zone	Easting	Northing	Context	Site Status **	SiteFeatures	SiteTypes	Reports
36-4-0138	Wellington Solar Farm IF8	GDA	55	684144	6400422	Open site	Destroyed	Artefact : -		
	<u>Contact</u>	<u>Recorders</u>	Mr.Matthew Barber,Mr.Matthew Barber,Mr.Matthew Barber,NGH Heritage - Fyshw						<u>Permits</u>	
36-4-0149	Wellington Solar Farm AS6	GDA	55	684331	6400473	Open site	Destroyed	Artefact : -		
	<u>Contact</u>	<u>Recorders</u>	Mr.Matthew Barber,Mr.Matthew Barber,Mr.Matthew Barber,NGH Heritage - Fyshw						<u>Permits</u>	
36-4-0180	Wellington Nth IF5	GDA	55	681868	6402277	Open site	Valid	Artefact : -		
	<u>Contact</u>	<u>Recorders</u>	Mr.Matthew Barber,NGH Heritage - Fyshwick						<u>Permits</u>	
36-4-0174	Wellington Nth AFT2	GDA	55	682736	6401593	Open site	Valid	Artefact : -		
	<u>Contact</u>	<u>Recorders</u>	Mr.Matthew Barber,NGH Heritage - Fyshwick						<u>Permits</u>	
36-1-0723	Wellington Nth IF24	GDA	55	682838	6403645	Open site	Valid	Artefact : -		
	<u>Contact</u>	<u>Recorders</u>	Mr.Matthew Barber,NGH Heritage - Fyshwick						<u>Permits</u>	
36-4-0177	Wellington Nth IF2	GDA	55	682214	6400473	Open site	Valid	Artefact : -		
	<u>Contact</u>	<u>Recorders</u>	Mr.Matthew Barber,NGH Heritage - Fyshwick						<u>Permits</u>	
36-4-0145	Wellington Solar Farm AS2	GDA	55	683283	6401650	Open site	Destroyed	Artefact : -		
	<u>Contact</u>	<u>Recorders</u>	Mr.Matthew Barber,Mr.Matthew Barber,Mr.Matthew Barber,NGH Heritage - Fyshw						<u>Permits</u>	
36-4-0154	Wellington Solar Farm ST1	GDA	55	683726	6401020	Open site	Valid	Modified Tree (Carved or Scarred) : -		
	<u>Contact</u>	<u>Recorders</u>	Mr.Matthew Barber,NGH Heritage - Fyshwick						<u>Permits</u>	
36-1-0728	Wellington Nth IF19	GDA	55	683854	6402807	Open site	Valid	Artefact : -		
	<u>Contact</u>	<u>Recorders</u>	Mr.Matthew Barber,NGH Heritage - Fyshwick						<u>Permits</u>	
36-4-0136	Wellington Solar Farm IF12	GDA	55	684501	6400245	Open site	Destroyed	Artefact : -		
	<u>Contact</u>	<u>Recorders</u>	Mr.Matthew Barber,Mr.Matthew Barber,Mr.Matthew Barber,NGH Heritage - Fyshw						<u>Permits</u>	
36-4-0135	Wellington Solar Farm IF13	GDA	55	684554	6400033	Open site	Destroyed	Artefact : -		
	<u>Contact</u>	<u>Recorders</u>	Mr.Matthew Barber,Mr.Matthew Barber,Mr.Matthew Barber,NGH Heritage - Fyshw						<u>Permits</u>	
36-4-0203	Wellington Nth SF Additional Area IF1	GDA	55	684764	6399721	Open site	Valid	Artefact : -		
	<u>Contact</u>	<u>Recorders</u>	Mr.Matthew Barber,Mr.Matthew Barber,NGH Heritage - Fyshwick,NGH Heritage - F						<u>Permits</u>	
36-4-0179	Wellington Nth IF4	GDA	55	681829	6401741	Open site	Valid	Artefact : -		
	<u>Contact</u>	<u>Recorders</u>	Mr.Matthew Barber,NGH Heritage - Fyshwick						<u>Permits</u>	
36-4-0170	Wellington Nth IF8	GDA	55	683009	6402137	Open site	Valid	Artefact : -		
	<u>Contact</u>	<u>Recorders</u>	Mr.Matthew Barber,NGH Heritage - Fyshwick						<u>Permits</u>	
36-4-0158	Wellington Solar Farm IF4	GDA	55	683642	6400795	Open site	Destroyed	Artefact : -		
	<u>Contact</u>	<u>Recorders</u>	Mr.Matthew Barber,Mr.Matthew Barber,Mr.Matthew Barber,NGH Heritage - Fyshw						<u>Permits</u>	
36-1-0737	Wellington Nth AFT6	GDA	55	683729	6402849	Open site	Valid	Artefact : -		
	<u>Contact</u>	<u>Recorders</u>	Mr.Matthew Barber,NGH Heritage - Fyshwick						<u>Permits</u>	
36-4-0210	Wellington Solar IF 17	GDA	55	683991	6400184	Open site	Destroyed	Artefact : -		
	<u>Contact</u>	<u>Recorders</u>	Mr.Matthew Barber,Mr.Matthew Barber,NGH Heritage - Fyshwick,NGH Heritage - F						<u>Permits</u>	
36-4-0216	WE-IF-001 (Goolma Road)	GDA	55	684088	6399493	Open site	Valid	Artefact : -		

Report generated by AHIMS Web Service on 19/01/2022 for Alison Fenwick for the following area at Lat, Long From : -32.528787, 148.933389 - Lat, Long To : -32.481745, 148.989198.

Number of Aboriginal sites and Aboriginal objects found is 81

This information is not guaranteed to be free from error omission. Heritage NSW and its employees disclaim liability for any act done or omission made on the information and consequences of such acts or omission.

SiteID	SiteName	Datum	Zone	Easting	Northing	Context	Site Status **	SiteFeatures	SiteTypes	Reports
	Contact	Recorders	Kayandel Archaeological Services,Ms.Natalie Stiles					Permits		
36-4-0175	Wellington Nth AFT3	GDA	55	685303	6401839	Open site	Valid	Artefact : -		
	Contact	Recorders	Mr.Matthew Barber,NGH Heritage - Fyshwick					Permits		
36-4-0173	Wellington Nth AFT1	GDA	55	682573	6401365	Open site	Valid	Artefact : -		
	Contact	Recorders	Mr.Matthew Barber,NGH Heritage - Fyshwick					Permits		
36-4-0142	Wellington Solar Farm IF1	GDA	55	682740	6401252	Open site	Valid	Artefact : -		
	Contact	Recorders	Mr.Matthew Barber,NGH Heritage - Fyshwick					Permits		
36-4-0147	Wellington Solar Farm AS3	GDA	55	683565	6400929	Open site	Destroyed	Artefact : -		
	Contact	Recorders	Mr.Matthew Barber,Mr.Matthew Barber,NGH Heritage - Fyshwick,NGH Heritage - F					Permits		
36-4-0153	Wellington Solar Farm AS10	GDA	55	683546	6399549	Open site	Destroyed	Artefact : -		
	Contact	Recorders	Mr.Matthew Barber,Mr.Matthew Barber,Mr.Matthew Barber,NGH Heritage - Fyshw					Permits		
36-4-0146	Wellington Solar Farm AS4	GDA	55	683623	6400932	Open site	Destroyed	Artefact : -		
	Contact	Recorders	Mr.Matthew Barber,Mr.Matthew Barber,Mr.Matthew Barber,NGH Heritage - Fyshw					Permits		
36-1-0729	Wellington Nth IF18	GDA	55	683689	6402672	Open site	Valid	Artefact : -		
	Contact	Recorders	Mr.Matthew Barber,NGH Heritage - Fyshwick					Permits		
36-4-0159	Wellington Solar Farm IF5	GDA	55	683677	6400457	Open site	Destroyed	Artefact : -		
	Contact	Recorders	Mr.Matthew Barber,Mr.Matthew Barber,Mr.Matthew Barber,NGH Heritage - Fyshw					Permits		
36-1-0725	Wellington Nth IF22	GDA	55	683986	6403324	Open site	Valid	Artefact : -		
	Contact	Recorders	Mr.Matthew Barber,NGH Heritage - Fyshwick					Permits		
36-4-0148	Wellington Solar Farm AS5	GDA	55	684194	6400396	Open site	Destroyed	Artefact : -		
	Contact	Recorders	Mr.Matthew Barber,Mr.Matthew Barber,Mr.Matthew Barber,NGH Heritage - Fyshw					Permits		
36-4-0220	UWFTMR_IF1	GDA	55	685171	6399910	Open site	Valid	Artefact : -		
	Contact	Recorders	Austral Archaeology - Wollongong,Mr.Ricardo Servin					Permits		
36-1-0721	Wellington Nth IF26	GDA	55	682812	6403457	Open site	Valid	Artefact : -		
	Contact	Recorders	Mr.Matthew Barber,NGH Heritage - Fyshwick					Permits		
36-4-0176	Wellington Nth IF1	GDA	55	682306	6400402	Open site	Valid	Artefact : -		
	Contact	Recorders	Mr.Matthew Barber,NGH Heritage - Fyshwick					Permits		
36-4-0156	Wellington Solar Farm IF3	GDA	55	683394	6400771	Open site	Destroyed	Artefact : -		
	Contact	Recorders	Mr.Matthew Barber,Mr.Matthew Barber,Mr.Matthew Barber,NGH Heritage - Fyshw					Permits		
36-4-0150	Wellington Solar Farm AS7	GDA	55	684252	6400282	Open site	Destroyed	Artefact : -		
	Contact	Recorders	Mr.Matthew Barber,Mr.Matthew Barber,Mr.Matthew Barber,NGH Heritage - Fyshw					Permits		
36-4-0137	Wellington Solar Farm IF11	GDA	55	684439	6400296	Open site	Valid	Artefact : -		
	Contact	Recorders	Mr.Matthew Barber,NGH Heritage - Fyshwick					Permits		
36-1-0732	Wellington Nth IF15	GDA	55	685546	6403702	Open site	Valid	Artefact : -		
	Contact	Recorders	Mr.Matthew Barber,NGH Heritage - Fyshwick					Permits		
36-1-0733	Wellington Nth IF13	GDA	55	685707	6402979	Open site	Valid	Artefact : -		

SiteID	SiteName	Datum	Zone	Easting	Northing	Context	Site Status **	SiteFeatures	SiteTypes	Reports
	Contact	Recorders	Mr.Matthew Barber,NGH Heritage - Fyshwick						Permits	
36-1-0734	Wellington Nth IF14	GDA	55	685837	6403256	Open site	Valid	Artefact : -		
	Contact	Recorders	Mr.Matthew Barber,NGH Heritage - Fyshwick						Permits	
36-4-0141	Wellington Solar Farm IF7	GDA	55	683989	6400395	Open site	Destroyed	Artefact : -		
	Contact	Recorders	Mr.Matthew Barber,Mr.Matthew Barber,Mr.Matthew Barber,NGH Heritage - Fyshw						Permits	
36-4-0218	Wellington Solar IF 18	GDA	55	684051	6400406	Open site	Valid	Artefact : -		
	Contact	Recorders	Mr.Matthew Barber,NGH Heritage - Fyshwick						Permits	
36-4-0168	Wellington Nth IF10	GDA	55	684306	6402371	Open site	Valid	Artefact : -		
	Contact	Recorders	Mr.Matthew Barber,NGH Heritage - Fyshwick						Permits	
36-4-0139	Wellington Solar Farm IF9	GDA	55	684628	6400510	Open site	Valid	Artefact : -		
	Contact	Recorders	Mr.Matthew Barber,NGH Heritage - Fyshwick						Permits	
36-4-0178	Wellington Nth IF3	GDA	55	681796	6401528	Open site	Valid	Artefact : -		
	Contact	Recorders	Mr.Matthew Barber,NGH Heritage - Fyshwick						Permits	
36-4-0171	Wellington Nth IF6	GDA	55	682629	6401320	Open site	Valid	Artefact : -		
	Contact	Recorders	Mr.Matthew Barber,NGH Heritage - Fyshwick						Permits	
36-1-0739	Wellington Nth AFT8	GDA	55	682672	6403117	Open site	Valid	Artefact : -		
	Contact	Recorders	Mr.Matthew Barber,NGH Heritage - Fyshwick						Permits	
36-4-0172	Wellington Nth IF7	GDA	55	682644	6401492	Open site	Valid	Artefact : -		
	Contact	Recorders	Mr.Matthew Barber,NGH Heritage - Fyshwick						Permits	
36-1-0719	Wellington Nth IF28	GDA	55	682756	6402864	Open site	Valid	Artefact : -		
	Contact	Recorders	Mr.Matthew Barber,NGH Heritage - Fyshwick						Permits	
36-4-0081	Restriction applied. Please contact ahims@environment.nsw.gov.au.					Open site	Valid			102211,102779
	Contact	Recorders	Lloyd Nolan,Mr.Bradley Bliss,Wellington Valley Wiradjuri Aboriginal Corporation						Permits	9
36-4-0143	Wellington Solar Farm IF15	GDA	55	683583	6399737	Open site	Destroyed	Artefact : -		
	Contact	Recorders	Mr.Matthew Barber,Mr.Matthew Barber,Mr.Matthew Barber,NGH Heritage - Fyshw						Permits	
36-4-0214	Wellington Solar AS 13	GDA	55	683672	6399764	Open site	Destroyed	Artefact : -		
	Contact	Recorders	Mr.Matthew Barber,Mr.Matthew Barber,NGH Heritage - Fyshwick,NGH Heritage - F						Permits	
36-4-0211	Wellington Solar IF 16	GDA	55	683706	6399911	Open site	Destroyed	Artefact : -		
	Contact	Recorders	Mr.Matthew Barber,Mr.Matthew Barber,NGH Heritage - Fyshwick,NGH Heritage - F						Permits	
36-4-0099	Isolated Artefact CC-IF-01	AGD	55	686314	6401244	Open site	Valid	Artefact : 1		102779
	Contact T Russell	Recorders	Lloyd Nolan						Permits	
36-1-0726	Wellington Nth IF21	GDA	55	683943	6403314	Open site	Valid	Artefact : -		
	Contact	Recorders	Mr.Matthew Barber,NGH Heritage - Fyshwick						Permits	
36-4-0212	Wellington Solar AS 11	GDA	55	684000	6400229	Open site	Destroyed	Artefact : -		
	Contact	Recorders	Mr.Matthew Barber,Mr.Matthew Barber,NGH Heritage - Fyshwick,NGH Heritage - F						Permits	
36-4-0152	Wellington Solar Farm AS9	GDA	55	684000	6399939	Open site	Valid	Artefact : -		

Report generated by AHIMS Web Service on 19/01/2022 for Alison Fenwick for the following area at Lat, Long From : -32.528787, 148.933389 - Lat, Long To : -32.481745, 148.989198.

Number of Aboriginal sites and Aboriginal objects found is 81

This information is not guaranteed to be free from error omission. Heritage NSW and its employees disclaim liability for any act done or omission made on the information and consequences of such acts or omission.

SiteID	SiteName	Datum	Zone	Easting	Northing	Context	Site Status **	SiteFeatures	SiteTypes	Reports
	Contact	Recorders	Mr.Matthew Barber,NGH Heritage - Fyshwick					Permits		
36-4-0167	Wellington Nth IF11	GDA	55	684638	6401740	Open site	Valid	Artefact : -		
	Contact	Recorders	Mr.Matthew Barber,NGH Heritage - Fyshwick					Permits		
36-4-0140	Wellington Solar Farm IF10	GDA	55	684774	6400441	Open site	Destroyed	Artefact : -		
	Contact	Recorders	Mr.Matthew Barber,Mr.Matthew Barber,Mr.Matthew Barber,NGH Heritage - Fyshw					Permits		
36-4-0166	Wellington Nth IF12	GDA	55	685308	6401654	Open site	Valid	Artefact : -		
	Contact	Recorders	Mr.Matthew Barber,NGH Heritage - Fyshwick					Permits		
36-4-0202	Wellington Nth SF Additional Area IF2	GDA	55	685619	6399925	Open site	Valid	Artefact : -		
	Contact	Recorders	Mr.Matthew Barber,Mr.Matthew Barber,NGH Heritage - Fyshwick,NGH Heritage - F					Permits		
36-1-0735	Wellington Nth AFT4	GDA	55	685752	6403199	Open site	Valid	Artefact : -		
	Contact	Recorders	Mr.Matthew Barber,NGH Heritage - Fyshwick					Permits		
36-1-0736	Wellington Nth AFT5	GDA	55	685825	6403203	Open site	Valid	Artefact : -		
	Contact	Recorders	Mr.Matthew Barber,NGH Heritage - Fyshwick					Permits		
36-1-0745	Restriction applied. Please contact ahims@environment.nsw.gov.au.					Open site	Valid			
	Contact	Recorders	Mr.Bradley Bliss,Wellington Valley Wiradjuri Aboriginal Corporation					Permits		
36-1-0744	Restriction applied. Please contact ahims@environment.nsw.gov.au.					Open site	Valid			
	Contact	Recorders	Mr.Bradley Bliss,Wellington Valley Wiradjuri Aboriginal Corporation					Permits		
36-1-0743	Restriction applied. Please contact ahims@environment.nsw.gov.au.					Open site	Valid			
	Contact	Recorders	Mr.Bradley Bliss,Wellington Valley Wiradjuri Aboriginal Corporation					Permits		
36-1-0742	Restriction applied. Please contact ahims@environment.nsw.gov.au.					Open site	Valid			
	Contact	Recorders	Mr.Bradley Bliss,Wellington Valley Wiradjuri Aboriginal Corporation					Permits		
36-4-0155	Wellington Solar Farm IF2	GDA	55	682805	6400601	Open site	Valid	Artefact : -		
	Contact	Recorders	Mr.Matthew Barber,NGH Heritage - Fyshwick					Permits		
36-1-0738	Wellington Nth AFT7	GDA	55	683012	6403083	Open site	Valid	Artefact : -		
	Contact	Recorders	Mr.Matthew Barber,NGH Heritage - Fyshwick					Permits		
36-4-0144	Wellington Solar Farm AS1	GDA	55	683060	6401648	Open site	Destroyed	Artefact : -		
	Contact	Recorders	Mr.Matthew Barber,Mr.Matthew Barber,Mr.Matthew Barber,NGH Heritage - Fyshw					Permits		
36-1-0740	Wellington Nth AFT9	GDA	55	683403	6403528	Open site	Valid	Artefact : -		
	Contact	Recorders	Mr.Matthew Barber,NGH Heritage - Fyshwick					Permits		
36-4-0213	Wellington Solar AS 12	GDA	55	683560	6400035	Open site	Destroyed	Artefact : -		
	Contact	Recorders	Mr.Matthew Barber,Mr.Matthew Barber,NGH Heritage - Fyshwick,NGH Heritage - F					Permits		
36-4-0151	Wellington Solar Farm AS8	GDA	55	684389	6400526	Open site	Valid	Artefact : -		
	Contact	Recorders	Mr.Matthew Barber,NGH Heritage - Fyshwick					Permits		
36-4-0201	Wellington Nth SF Additional Area IF3	GDA	55	684736	6399572	Open site	Not a Site	Artefact : -		

SiteID	SiteName	Datum	Zone	Easting	Northing	Context	Site Status **	SiteFeatures	SiteTypes	Reports
	<u>Contact</u>	<u>Recorders</u>	Mr.Matthew Barber,Mr.Matthew Barber,NGH Heritage - Fyshwick,NGH Heritage - F					<u>Permits</u>		
36-1-0731	Wellington Nth IF16	GDA	55	685677	6404169	Open site	Valid	Artefact : -		
	<u>Contact</u>	<u>Recorders</u>	Mr.Matthew Barber,NGH Heritage - Fyshwick					<u>Permits</u>		
36-1-0730	Wellington Nth IF17	GDA	55	685860	6404340	Open site	Valid	Artefact : -		
	<u>Contact</u>	<u>Recorders</u>	Mr.Matthew Barber,NGH Heritage - Fyshwick					<u>Permits</u>		
36-1-0720	Wellington Nth IF27	GDA	55	682775	6403027	Open site	Valid	Artefact : -		
	<u>Contact</u>	<u>Recorders</u>	Mr.Matthew Barber,NGH Heritage - Fyshwick					<u>Permits</u>		
36-1-0722	Wellington Nth IF25	GDA	55	683109	6403576	Open site	Valid	Artefact : -		
	<u>Contact</u>	<u>Recorders</u>	Mr.Matthew Barber,NGH Heritage - Fyshwick					<u>Permits</u>		
36-1-0724	Wellington Nth IF23	GDA	55	683257	6403913	Open site	Valid	Artefact : -		
	<u>Contact</u>	<u>Recorders</u>	Mr.Matthew Barber,NGH Heritage - Fyshwick					<u>Permits</u>		
36-4-0169	Wellington Nth IF9	GDA	55	683241	6402013	Open site	Valid	Artefact : -		
	<u>Contact</u>	<u>Recorders</u>	Mr.Matthew Barber,NGH Heritage - Fyshwick					<u>Permits</u>		
36-4-0157	Wellington Solar Farm IF6	GDA	55	683359	6401664	Open site	Destroyed	Artefact : -		
	<u>Contact</u>	<u>Recorders</u>	Mr.Matthew Barber,Mr.Matthew Barber,Mr.Matthew Barber,NGH Heritage - Fyshw					<u>Permits</u>		
36-1-0727	Wellington Nth IF20	GDA	55	683548	6402828	Open site	Valid	Artefact : -		
	<u>Contact</u>	<u>Recorders</u>	Mr.Matthew Barber,NGH Heritage - Fyshwick					<u>Permits</u>		
36-4-0215	Wellington Solar Farm Artefact Burial Site	GDA	55	683612	6401795	Open site	Valid	Artefact : -		
	<u>Contact</u>	<u>Recorders</u>	Mr.Matthew Barber,NGH Heritage - Fyshwick					<u>Permits</u>		
36-4-0219	Wellington Solar Unexpected Find Reburial 1	GDA	55	683602	6401097	Open site	Valid	Artefact : -		
	<u>Contact</u>	<u>Recorders</u>	Mr.Matthew Barber,NGH Heritage - Fyshwick					<u>Permits</u>		

** Site Status

Valid - The site has been recorded and accepted onto the system as valid

Destroyed - The site has been completely impacted or harmed usually as consequence of permit activity but sometimes also after natural events. There is nothing left of the site on the ground but proponents should proceed with caution.

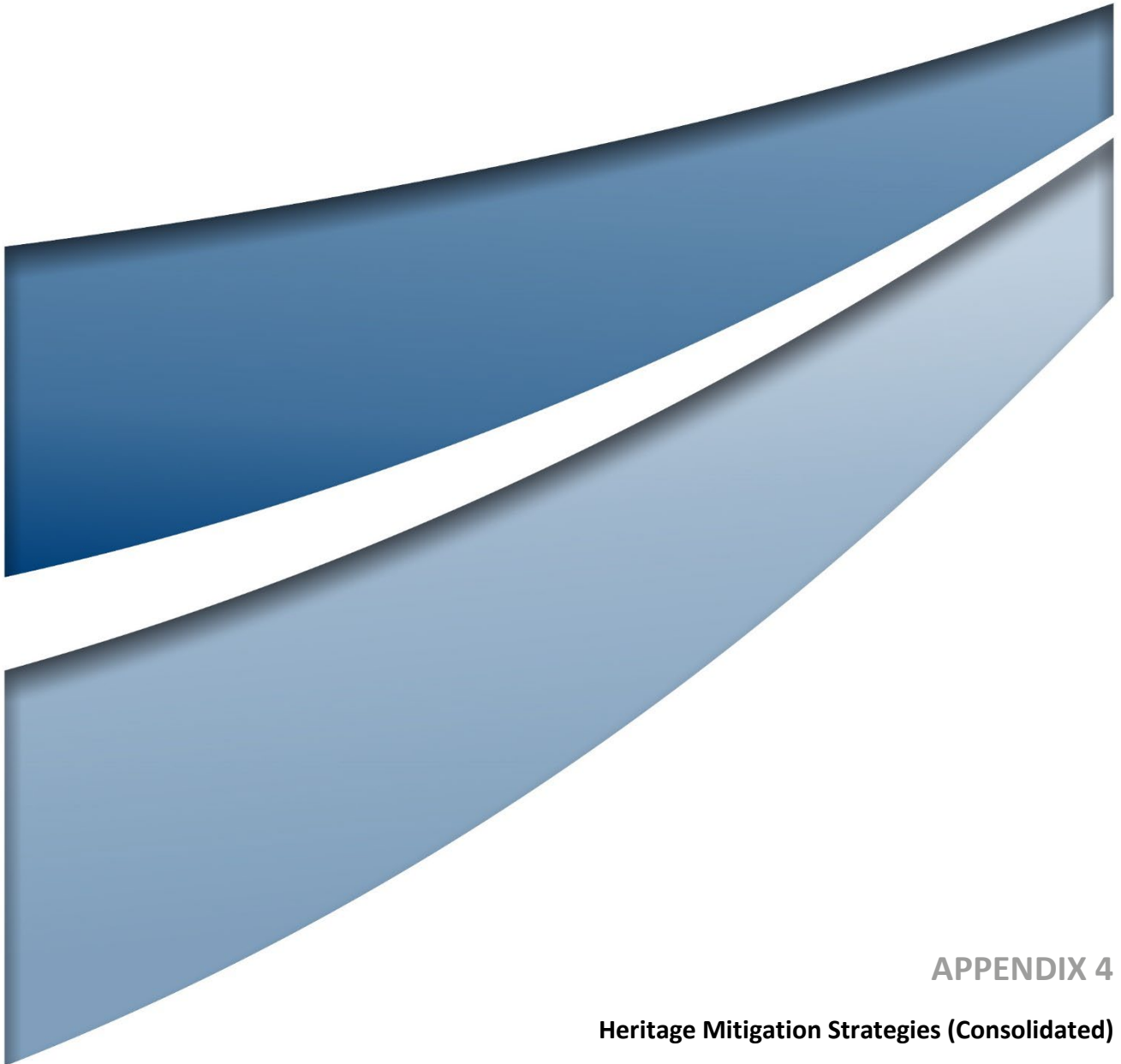
Partially Destroyed - The site has been only partially impacted or harmed usually as consequence of permit activity but sometimes also after natural events. There might be parts or sections of the original site still present on the ground

Not a site - The site has been originally entered and accepted onto AHIMS as a valid site but after further investigations it was decided it is NOT an aboriginal site. Impact of this type of site does not require permit but Heritage NSW should be notified

Report generated by AHIMS Web Service on 19/01/2022 for Alison Fenwick for the following area at Lat, Long From : -32.528787, 148.933389 - Lat, Long To : -32.481745, 148.989198.

Number of Aboriginal sites and Aboriginal objects found is 81

This information is not guaranteed to be free from error omission. Heritage NSW and its employees disclaim liability for any act done or omission made on the information and consequences of such acts or omission.



APPENDIX 4

Heritage Mitigation Strategies (Consolidated)

Heritage Mitigation Strategies (Consolidated)

The table below consolidates the Aboriginal Cultural Heritage and Historic Heritage mitigation strategies for the development, and provides commitments regarding applicable development phases, responsibilities, timing and records.

Further details regarding each mitigation strategy is provided in **Section 7.0** of this HMP.

From left to right, the columns of this table describe:

- The 'Source': where the heritage mitigation strategy has been recommended for the development
- The 'ID': a unique identifier for each mitigation strategy identified in this HMP
- The 'Aspect': a high-level summary of what heritage matter is being mitigated
- The 'Mitigation Strategy': describes the actions that will be undertaken to reduce the heritage impacts of the development, including a summary of any proposed techniques that will be used to implement the mitigation
- The 'Development Phase': identifies what part of the development phase the heritage strategy will apply. A heritage mitigation strategy can apply to multiple development phases.
- The 'Responsible Party': identifies which group is responsible for implementing the applicable heritage strategy. The 'Personnel Responsible' column identifies the individual from the 'Responsible Party' who is to implement the mitigation. Numbers 1-5 have been used to represent which individual is responsible, as follows:
 - 1 LSbp Development Principal
 - 2 Engineer, Procurement & Construction (EPC) Site Manager
 - 3 EPC Health, Safety and Environment (HSE) Coordinator
 - 4 Heritage Specialist
 - 5 All Employees and Contractors
 - *Note: for some mitigation measures, there is more than one 'Responsible Party' and 'Personnel Responsible'*
- The 'Timing/Frequency': describes when a mitigation strategy is to be implemented, or how frequently it is to be implemented
- The 'Implementation Action': provides a high-level statement that show how the mitigation/proposed techniques for the heritage strategies are practically being done within the development area. These procedures are described in **Section 7.0**
- The 'Compliance Record': identifies the record that will be used to maintain compliance with the applicable mitigation strategy.

Heritage Mitigation Strategies for the Development

Source	ID	Aspect	Mitigation Strategy	Development Phase				Responsible Party				Timing/Frequency	Implementation Action	Compliance Record
				Early Works Construction	Main Works Construction	Operations and Maintenance	Decommissioning	Principal (LSbp)	EPC Contractor	Operations and Maintenance	Personnel Responsible ^{1,2,3,4,5}			
SSD8895 Development Consent	HMP-01a	Heritage (general)	Prepare a HMP in accordance with Schedule 3, Condition 23	✓	✓	✓	✓	✓	-	-	1	Prior to any development	This HMP	This HMP
	HMP-01b	Heritage (general)	Implement this HMP in accordance with Schedule 3, Condition 23	✓	✓	✓	✓	✓	✓	✓	5	Prior to any development	This HMP	This HMP
Aboriginal Heritage Management														
SSD8895 Development Consent	HMP-02	Heritage (Aboriginal)	There will be ongoing consultation with the registered Aboriginal parties as detailed in the HMP, in accordance with the provisions of this HMP and the approval consent for the development (SSD 8895).	✓	✓	✓	✓	✓	✓	✓	2, 3, 4	Ongoing throughout pre-construction, construction and decommissioning	Section 7.1.1.1 of the HMP	Consultation Records
Heritage Management Plan	HMP-03	Heritage (Aboriginal)	Opportunity will be provided for Aboriginal party representatives to participate in mitigation and management works. Works may proceed if Aboriginal parties have accepted the opportunity, but do not attend.	✓	✓	✓	✓	-	✓	✓	3, 4	Prior to any mitigation and management works.	Section 7.1.1.1 of the HMP	Consultation Records
Heritage Management Plan	HMP-04	Heritage (Aboriginal)	Fencing will be implemented around all six sites identified in Table 7.1 of the HMP. A minimum 10 m buffer will be fenced around each scarred tree, and 5 m buffer for isolated artifacts.	✓	✓	-	✓	-	✓	-	3, 4	Ongoing throughout pre-construction, construction and decommissioning	Section 7.1.1.2 of the HMP	Site layout plans for Early Works and Main Works, records of inspection
Heritage Management Plan	HMP-05	Heritage (Aboriginal)	Fencing of the sites in Table 7.1 of the HMP may be of a temporary nature and will remain for the duration of the construction period, and during decommissioning. Standard high visibility fencing mesh would be used.	✓	✓	-	✓	-	✓	-	3	Ongoing throughout pre-construction, construction and decommissioning	Section 7.1.1.2 of the HMP	Records of inspection, Compliance Report
Heritage Management Plan	HMP-06	Heritage (Aboriginal)	Signage would be included along the fencing of each site, identifying it as a 'No-Go' zone.	✓	✓	-	✓	-	✓	-	3	Ongoing throughout pre-construction, construction and decommissioning	Section 7.1.1.2 of the HMP	Records of inspection, Compliance Report
Heritage Management Plan	HMP-07	Heritage (Aboriginal)	Marking out of the appropriate buffer zones for the sites identified in Table 7.1 of the HMP will be undertaken by an archaeologist and two Aboriginal party representatives.	✓	✓	-	✓	-	✓	-	3, 4	Ongoing throughout pre-construction, construction and decommissioning	Section 7.1.1.2 of the HMP	Consultation Records

Source	ID	Aspect	Mitigation Strategy	Development Phase				Responsible Party				Timing/Frequency	Implementation Action	Compliance Record
				Early Works Construction	Main Works Construction	Operations and Maintenance	Decommissioning	Principal (LSbp)	EPC Contractor	Operations and Maintenance	Personnel Responsible ^{1,2,3,4,5}			
Heritage Management Plan	HMP-08	Heritage (Aboriginal)	Collection of surface artefacts will be undertaken prior to the commencement of ground disturbance works, at all sites impacted by the development, including nine artefact scatters, and 27 isolated finds, as identified in Table 7.2 and Figure 7.1 .	✓	✓	-	-	-	✓	-	4	Prior to any development	Section 7.1.1.3 of the HMP	AHIMS Aboriginal Site Impact Recording Form, Compliance Report
Heritage Management Plan	HMP-09	Heritage (Aboriginal)	The surface collection will be undertaken in accordance with the following methodology:	✓	✓	-	-	-	✓	-	3, 4	Prior to any development	Section 7.1.1.3 of the HMP	AHIMS Aboriginal Site Impact Recording Form
Heritage Management Plan	HMP-09a	Heritage (Aboriginal)	The distribution of artefacts will be assessed and where appropriate, artefacts may be grouped for the purposes of recording and analysis	✓	✓	-	-	-	✓	-	4	Prior to any development	Section 7.1.1.3 of the HMP	AHIMS Aboriginal Site Impact Recording Form, Compliance Report
Heritage Management Plan	HMP-09b	Heritage (Aboriginal)	All artefacts will be flagged and photographed and recorded in accordance with the Code of Practice for Archaeological Investigation of Aboriginal Objects in NSW (DECCW, 2010). The following features will be recorded as a minimum: <ul style="list-style-type: none"> • Artefact class • Raw material • Maximum dimension (with additional width and thickness measurements for complete artefacts) • For retouched artefacts – location and type of retouch • Presence of use-wear and/or residues • Photographic recording of diagnostic and selected artefacts 	✓	✓	-	-	-	✓	-	4	Prior to any development	Section 7.1.1.3 of the HMP	AHIMS Aboriginal Site Impact Recording Form, Compliance Report, Surface Collection Works Report
Heritage Management Plan	HMP-09c	Heritage (Aboriginal)	The location of each scatter (including individual loci within larger scatters) or isolated artefact will be recorded and mapped using a hand-held 12 channel GPS (easting and northing).	✓	✓	-	-	-	✓	-	4	Prior to any development	Section 7.1.1.3 of the HMP	AHIMS Aboriginal Site Impact Recording Form, Compliance Report

Source	ID	Aspect	Mitigation Strategy	Development Phase				Responsible Party				Timing/Frequency	Implementation Action	Compliance Record
				Early Works Construction	Main Works Construction	Operations and Maintenance	Decommissioning	Principal (LSbp)	EPC Contractor	Operations and Maintenance	Personnel Responsible ^{1,2,3,4,5}			
Heritage Management Plan	HMP-09d	Heritage (Aboriginal)	All collected material will be bagged separately in zip-lock bags, and each tagged with a label including a unique identifier number that allows for specific identification of the artefact or group of artefacts (where relevant) with reference to its collection location	✓	✓	-	-	-	✓	-	4	Prior to any development	Section 7.1.1.3 of the HMP	AHIMS Aboriginal Site Impact Recording Form, Compliance Report
Heritage Management Plan	HMP-09e	Heritage (Aboriginal)	AHIMS Aboriginal Site Impact Recording Forms will be completed for each salvaged site. Each form will then be lodged with Heritage NSW on the AHIMS database.	✓	✓	-	-	-	✓	-	3, 4	Prior to any development	Section 7.1.1.3 of the HMP	AHIMS Aboriginal Site Impact Recording Form
Heritage Management Plan	HMP-10	Heritage (Aboriginal)	All collected artefacts will be moved to a safe area within the property outside footprint of the construction works and reburied.	✓	✓	✓	✓	-	✓	✓	2, 3, 4	Prior to any development	Section 7.1.1.3 of the HMP	Compliance Report, Surface Collection Works Report
Heritage Management Plan	HMP-11	Heritage (Aboriginal)	The reburial location for the artefacts will be discussed and agreed with Aboriginal party representatives prior to being undertaken. A Cultural Smoking Ceremony will take place to cleanse the salvaged artefacts and the reburial location.	✓	✓	-	-	-	✓	-	3, 4	Prior to any development	Section 7.1.1.3 of the HMP	Compliance Report, Consultation Records
Heritage Management Plan	HMP-12	Heritage (Aboriginal)	The collection, relocation and reburial of the artefacts will be undertaken by a suitably qualified archaeologist with representatives of the registered Aboriginal parties present.	✓	✓	-	-	-	✓	-	4	Prior to any development	Section 7.1.1.3 of the HMP	Compliance Report
Heritage Management Plan	HMP-13	Heritage (Aboriginal)	The collection, relocation and reburial of the artefacts will be undertaken in accordance with Requirement 26 of the Code of practice for Archaeological Investigation of Aboriginal Objects in New South Wales (DECCW, 2010).	✓	✓	-	-	-	✓	-	4	Prior to any development	Section 7.1.1.3 of the HMP	AHIMS Aboriginal Site Impact Recording Form
Heritage Management Plan	HMP-14	Heritage (Aboriginal)	An additional site card will be completed once the artefacts are moved to record their new location on the AHIMS database.	✓	✓	-	-	-	✓	-	4	Prior to any development	Section 7.1.1.3 of the HMP	AHIMS Site Cards

Source	ID	Aspect	Mitigation Strategy	Development Phase				Responsible Party				Timing/Frequency	Implementation Action	Compliance Record
				Early Works Construction	Main Works Construction	Operations and Maintenance	Decommissioning	Principal (LSbp)	EPC Contractor	Operations and Maintenance	Personnel Responsible ^{1,2,3,4,5}			
Heritage Management Plan	HMP-15	Heritage (Aboriginal)	<p>Following completion or conclusion of the surface collection works, a short report will be compiled that presents the findings of the surface collection works, including the recovery of archaeological material. This report will be completed in accordance with the Guide to Investigating, Assessing and Reporting on Aboriginal Cultural Heritage in NSW (OEH, 2011) and the Code of practice for Archaeological Investigation of Aboriginal Objects in New South Wales (DECCW, 2010) and will include:</p> <ul style="list-style-type: none"> A description of the results of the activities including general environmental information and development site context; The results of the artefact recording and analysis of salvaged archaeological material including implications for further contributions to the broader archaeological record of the region; and Details of the new location for the collected artefacts and reburial process. 	✓	✓	-	-	-	✓	-	3, 4	Prior to any development	Section 7.1.1.3 of the HMP	Surface Collection Works Report
Heritage Management Plan	HMP-16	Heritage (Aboriginal)	The surface collection report will be provided as a draft to the registered Aboriginal parties for review and comment. The finalised report will then be provided to Heritage NSW.	✓	✓	-	-	-	✓	-	3, 4	Prior to any development	Section 7.1.1.3 of the HMP	Surface Collection Works Report, Consultation Records
Heritage Management Plan	HMP-17	Heritage (Aboriginal)	<p>A monitoring program will be prepared and implemented to monitor Aboriginal sites that will remain in-situ and not be impacted by the development works. This will include:</p> <ul style="list-style-type: none"> Record of the condition of each site prior to any ground disturbing works taking place (Baseline Check) Record of the condition of the site after ground disturbing works (Post Activity Condition Check). 	✓	✓	-	✓	-	✓	-	3, 4	Pre-construction and decommissioning	Section 7.1.1.5 of the HMP	Monitoring program

Source	ID	Aspect	Mitigation Strategy	Development Phase				Responsible Party				Timing/Frequency	Implementation Action	Compliance Record
				Early Works Construction	Main Works Construction	Operations and Maintenance	Decommissioning	Principal (LSbp)	EPC Contractor	Operations and Maintenance	Personnel Responsible ^{1,2,3,4,5}			
Heritage Management Plan	HMP-18	Heritage (Aboriginal)	The relevant registered Aboriginal party representatives will be provided an opportunity to participate in the monitoring program.	✓	✓	-	✓	-	✓	-	3, 4	Pre-construction and decommissioning	Section 7.1.1.5 of the HMP	Monitoring program, Consultation Records
Heritage Management Plan	HMP-19	Heritage (Aboriginal)	<p>The Baseline Check will include, as a minimum:</p> <ul style="list-style-type: none"> • Verification of the location of the site (including GPS coordinates) and content • Provision of a site plan (where relevant) • Completion of detailed digital photography • Field notes documenting general condition 	✓	✓	-	✓	-	✓	-	3, 4	Prior to any development	Section 7.1.1.5 of the HMP	Monitoring program
Heritage Management Plan	HMP-20	Heritage (Aboriginal)	<p>Ongoing condition monitoring may be undertaken periodically as agreed with the relevant RAP via a vehicle survey with project/site staff and a RAP representative. Condition checks will involve:</p> <ul style="list-style-type: none"> • Evaluation of whether there has been any change to the site or its components • If so, information about the nature of changes should be recorded together with updated photographs. <p>When undertaken, a record of the monitoring event will be created and retained with project documentation for completeness and provided to the registered Aboriginal parties and Heritage NSW.</p>	✓	✓	✓	✓	-	✓	✓	3, 4	Ongoing throughout pre-construction, construction, decommissioning and operation	Section 7.1.1.5 of the HMP	Monitoring program, Consultation Records
Heritage Management Plan	HMP-21	Heritage (Aboriginal)	If either direct or indirect harm to the site as a result of activities associated with the development is identified during monitoring, the activities resulting in the harm will cease in the vicinity of the site until appropriate mitigation measures to protect the site (such as additional fencing) can be implemented.	✓	✓	✓	✓	-	✓	✓	2, 3, 4, 5	Ongoing throughout construction, decommissioning and operation	Section 7.1.1.5 of the HMP	Monitoring program, Incident Report

Source	ID	Aspect	Mitigation Strategy	Development Phase				Responsible Party				Timing/Frequency	Implementation Action	Compliance Record
				Early Works Construction	Main Works Construction	Operations and Maintenance	Decommissioning	Principal (LSbp)	EPC Contractor	Operations and Maintenance	Personnel Responsible ^{1,2,3,4,5}			
Heritage Management Plan	HMP-22	Heritage (Aboriginal)	In the event of unexpected impact to a site, a suitably qualified archaeologist and the registered Aboriginal parties will be consulted to develop appropriate additional mitigation and management measures in relation to the identified impact. A memorandum documenting the impact and including recommendations regarding additional mitigation/management of impact will be provided to the registered Aboriginal parties and Heritage NSW.	✓	✓	✓	✓	-	✓	✓	3,4	Ongoing throughout construction, decommissioning and operation	Section 7.1.1.5 of the HMP	Consultation Records
Heritage Management Plan	HMP-23	Heritage (Aboriginal)	In the event that an unexpected Aboriginal objects or sites or human skeletal remains may be discovered during construction works, the following procedures will be applied:	✓	✓	-	✓	-	✓	-	2,3,4,5	Ongoing throughout construction and decommissioning	Section 7.1.2.1 of the HMP	Unexpected Finds Protocol, Incident Report
Heritage Management Plan	HMP-23a	Heritage (Aboriginal)	The person who discovers or suspects they have discovered a potential Aboriginal object(s) during the proposed works will immediately notify the person in charge of the construction activity	✓	✓	-	✓	-	✓	-	2,5	Ongoing throughout construction and decommissioning	Section 7.1.2.1 of the HMP	Unexpected Finds Protocol, Incident Report
Heritage Management Plan	HMP-23b	Heritage (Aboriginal)	The EPC Site Manager/EPC HSE will then suspend any relevant works at the location of the discovery and within 10 m of the extent of the suspected object(s). In the case of multiple objects, the 10 m area applies from the outermost of the cluster of objects	✓	✓	-	✓	-	✓	-	2,3	Ongoing throughout construction and decommissioning	Section 7.1.2.1 of the HMP	Unexpected Finds Protocol, Incident Report
Heritage Management Plan	HMP-23c	Heritage (Aboriginal)	An area of 10 m radius is to be cordoned off by temporary fencing around the suspected Aboriginal heritage object(s)	✓	✓	-	✓	-	✓	-	2,3	Ongoing throughout construction and decommissioning	Section 7.1.2.1 of the HMP	Unexpected Finds Protocol, Incident Report

Source	ID	Aspect	Mitigation Strategy	Development Phase				Responsible Party				Timing/Frequency	Implementation Action	Compliance Record
				Early Works Construction	Main Works Construction	Operations and Maintenance	Decommissioning	Principal (LSbp)	EPC Contractor	Operations and Maintenance	Personnel Responsible ^{1,2,3,4,5}			
Heritage Management Plan	HMP-23d	Heritage (Aboriginal)	The EPC Site Manager/EPC HSE will take photos of the suspected Aboriginal heritage object(s) and send to LSbp, who will pass it on to a suitably qualified archaeologist who will provide preliminary advice on the find. Information about the location and condition of the site will also be provided. The archaeologist will then contact the relevant Aboriginal Group to advise them of the potential find and provide a copy of the photos and relevant information about the find.	✓	✓	-	✓	-	✓	-	2, 3, 4	Ongoing throughout construction and decommissioning	Section 7.1.2.1 of the HMP	Unexpected Finds Protocol, Incident Report
Heritage Management Plan	HMP-23e	Heritage (Aboriginal)	The Aboriginal heritage object or material will not be moved or disturbed until preliminary assessment has been undertaken by a cultural heritage specialist and written clearance of the site provided	✓	✓	-	✓	-	✓	-	2, 3, 4	Ongoing throughout construction and decommissioning	Section 7.1.2.1 of the HMP	Unexpected Finds Protocol, Incident Report
Heritage Management Plan	HMP-23f	Heritage (Aboriginal)	Based on the results of the preliminary advice and identified significance of the suspected Aboriginal object(s), the following steps will be followed: <ul style="list-style-type: none"> Not an Aboriginal heritage item: the archaeologist will provide written clearance of the site and works are able to recommence Further confirmation required: the archaeologist and representatives of the registered Aboriginal parties will be provided with the opportunity to inspect the object(s) to confirm its significance Confirmed Aboriginal object(s): If it is an Aboriginal item and further assessment is required, notification will be made to all relevant registered Aboriginal parties and Heritage NSW to provide information about the newly identified site and determine an appropriate management strategy.	✓	✓	-	✓	-	✓	-	2, 3, 4	Ongoing throughout construction and decommissioning	Section 7.1.2.1 of the HMP	Unexpected Finds Protocol, Incident Report
Heritage Management Plan	HMP-24	Heritage (Aboriginal)	In the event that suspected human skeletal remains are found during development activities, the following procedure will be followed:	✓	✓	-	✓	-	✓	-	2, 3, 4, 5	Ongoing throughout construction and decommissioning	Section 7.1.2.2 of the HMP	Unexpected Finds Protocol, Incident Report

Source	ID	Aspect	Mitigation Strategy	Development Phase				Responsible Party				Timing/Frequency	Implementation Action	Compliance Record
				Early Works Construction	Main Works Construction	Operations and Maintenance	Decommissioning	Principal (LSbp)	EPC Contractor	Operations and Maintenance	Personnel Responsible ^{1,2,3,4,5}			
Heritage Management Plan	HMP-24a	Heritage (Aboriginal)	When suspected human skeletal remains are exposed or uncovered, all work is to cease immediately in the near vicinity of the find location	✓	✓	-	✓	-	✓	-	2, 3, 5	Ongoing throughout construction and decommissioning	Section 7.1.2.2 of the HMP	Unexpected Finds Protocol, Incident Report
Heritage Management Plan	HMP-24b	Heritage (Aboriginal)	An area of 20 m radius is to be cordoned off by temporary fencing around the outer extent of the exposed suspected human skeletal remains site	✓	✓	-	✓	-	✓	-	2, 3	Ongoing throughout construction and decommissioning	Section 7.1.2.2 of the HMP	Unexpected Finds Protocol, Incident Report
Heritage Management Plan	HMP-24c	Heritage (Aboriginal)	The EPC Site Manager / EPC HSE is to notify the New South Wales Police and the State Coroner's Office immediately	✓	✓	-	✓	-	✓	-	3	Ongoing throughout construction and decommissioning	Section 7.1.2.2 of the HMP	Unexpected Finds Protocol, Incident Report
Heritage Management Plan	HMP-24d	Heritage (Aboriginal)	<p>A suitably qualified person will inspect the remains and make a determination of whether the remains are human, and if so, the likely ancestry (Aboriginal or non-Aboriginal) and the antiquity (pre-contact, historical or forensic)</p> <ul style="list-style-type: none"> If the remains are forensic, the area is deemed a crime scene If the remains are identified as Aboriginal, the site is to be secured and Heritage NSW and all registered Aboriginal parties are to be notified. Under Section 20 (1) of the Aboriginal & Torres Strait Islander Heritage Protection Act 1986, the Department of Agriculture, Water and Environment (DAWE) will also be notified If the remains are non-Aboriginal (historical) remains, the site is to be secured and Heritage NSW is to be contacted 	✓	✓	-	✓	-	✓	-	3, 4	Ongoing throughout construction and decommissioning	Section 7.1.2.2 of the HMP	Unexpected Finds Protocol, Incident Report
Heritage Management Plan	HMP-24e	Heritage (Aboriginal)	The above process functions only to appropriately identify the remains and secure the site. From this time, the management of the remains is to be determined through liaison with the appropriate stakeholders (including the NSW Police Force, forensic anthropologist, Heritage NSW and the registered Aboriginal parties).	✓	✓	-	✓	-	✓	-	3, 4	Ongoing throughout construction and decommissioning	Section 7.1.2.2 of the HMP	Unexpected Finds Protocol, Incident Report, Consultation Records

Source	ID	Aspect	Mitigation Strategy	Development Phase				Responsible Party				Timing/Frequency	Implementation Action	Compliance Record
				Early Works Construction	Main Works Construction	Operations and Maintenance	Decommissioning	Principal (LSbp)	EPC Contractor	Operations and Maintenance	Personnel Responsible ^{1,2,3,4,5}			
Heritage Management Plan	HMP-24f	Heritage (Aboriginal)	No works will be recommenced at the location of the remains until such time as the required management actions have been undertaken and written consent to recommence has been provided by the appropriate government authority (either NSW Police or Heritage NSW depending on the nature of the remains).	✓	✓	-	✓	-	✓	-	2, 3, 4	Ongoing throughout construction and decommissioning	Section 7.1.2.2 of the HMP	Unexpected Finds Protocol, Incident Report
Historic Heritage Management														
Heritage Management Plan	HMP-25	Heritage (Historic)	All personal and contractors associated with the development will be made aware the location of the Noonee Nyrang Homestead and heritage status	✓	✓	✓	✓	-	✓	✓	2, 3, 5	Ongoing throughout pre-construction, construction, decommissioning and operation	Section 7.2.1 of the HMP	Induction sign-off sheet
Heritage Management Plan	HMP-26	Heritage (Historic)	The existing outbuildings and stone shed around the Noonee Nyrang Homestead will be maintained and not altered	✓	✓	✓	✓	-	✓	✓	2, 3	Ongoing throughout pre-construction, construction, decommissioning and operation	Section 7.2.1 of the HMP	Compliance Records, site layout plans
Heritage Management Plan	HMP-27	Heritage (Historic)	The exclusion zone around the Noonee Nyrang Homestead and the SCS Wellington facility will be explained during the heritage inductions and toolbox talks and all contractors and personal associated with the development made aware of it.	✓	✓	✓	✓	-	✓	✓	2, 3, 5	Ongoing throughout pre-construction, construction, decommissioning and operation	Section 7.2.1 of the HMP	Induction sign-off sheet
Heritage Management Plan	HMP-28	Heritage (Historic)	Where the potential to avoid impacts to the European survey marker tree is identified, an exclusion zone may be established around the tree and the tree fenced with a buffer of 10 m.	✓	✓	✓	✓	-	✓	✓	2, 3, 4	Ongoing throughout pre-construction, construction, decommissioning and operation	Section 7.2.1.1 of the HMP	Compliance Records
Heritage Management Plan	HMP-29	Heritage (Historic)	The SCS Wellington facility will be avoided and all personnel and contractors associated with the development made aware of its location.	✓	✓	✓	✓	-	✓	✓	2, 3, 5	Ongoing throughout pre-construction, construction, decommissioning and operation	Section 7.2.1.1 of the HMP	Induction sign-off sheet
Heritage Management Plan	HMP-30	Heritage (Historic)	Should the scope of the development change so that impact to the SCS Wellington facility is likely to occur, consultation will be undertaken with the Council to identify appropriate management and/or mitigation measures, if required.	✓	✓	✓	✓	-	✓	✓	2, 3, 4	Ongoing throughout pre-construction, construction, decommissioning and operation	Section 7.2.1.1 of the HMP	Compliance Records, Consultation Records

Source	ID	Aspect	Mitigation Strategy	Development Phase				Responsible Party				Timing/Frequency	Implementation Action	Compliance Record
				Early Works Construction	Main Works Construction	Operations and Maintenance	Decommissioning	Principal (LSbp)	EPC Contractor	Operations and Maintenance	Personnel Responsible ^{1,2,3,4,5}			
Heritage Management Plan	HMP-31	Heritage (Historic)	In the event of unexpected historical finds, features or subsurface deposits, the following procedure will be followed:	✓	✓	✓	✓	-	✓	✓	2, 3, 4, 5	Ongoing throughout pre-construction, construction, decommissioning and operation	Section 7.2.2 of the HMP	Unexpected Finds Protocol, Incident Report
Heritage Management Plan	HMP-31a	Heritage (Historic)	The person who discovers or suspects they have discovered a potential historical heritage item during the proposed works will immediately notify the person in charge of the activity	✓	✓	✓	✓	-	✓	✓	2, 5	Ongoing throughout construction, decommissioning and operation	Section 7.2.2 of the HMP	Unexpected Finds Protocol, Incident Report
Heritage Management Plan	HMP-31b	Heritage (Historic)	Works in the immediate vicinity of the item(s) will cease and the area around the item(s) will be cordoned off with temporary fencing	✓	✓	✓	✓	-	✓	✓	2, 3	Ongoing throughout, construction, decommissioning and operation	Section 7.2.2 of the HMP	Unexpected Finds Protocol, Incident Report
Heritage Management Plan	HMP-31c	Heritage (Historic)	An area of 10 m radius is to be cordoned off by temporary fencing around the suspected heritage item(s). In the case of multiple items, the 5 m area applies from the outermost of the cluster of items. The heritage item will not be moved or disturbed until preliminary assessment has been undertaken by a cultural heritage consultant	✓	✓	✓	✓	-	✓	✓	2, 3	Ongoing throughout, construction, decommissioning and operation	Section 7.2.2 of the HMP	Unexpected Finds Protocol, Incident Report
Heritage Management Plan	HMP-31d	Heritage (Historic)	The EPC Site Manager/EPC HSE will then inform LSbp, whom will contact a suitably qualified cultural heritage consultant to evaluate the potential historical heritage item. Information about the location and condition of the site will also be provided. An inspection of the item(s) by the heritage consultant may be required to confirm the significance of the item(s)	✓	✓	✓	✓	✓	✓	✓	1, 3, 4	Ongoing throughout, construction, decommissioning and operation	Section 7.2.2 of the HMP	Unexpected Finds Protocol, Incident Report
Heritage Management Plan	HMP-31e	Heritage (Historic)	Where the item(s) are identified as having local or higher significance, the EPC Site Manager/EPC HSE will inform LSbp, whom will contact Heritage NSW to provide information about the newly identified site/material and determine an appropriate management strategy. Should it be determined that the material identified does not hold any significance, works may proceed and there are no further requirements.	✓	✓	✓	✓	✓	✓	✓	1, 2, 3, 4	Ongoing throughout, construction, decommissioning and operation	Section 7.2.2 of the HMP	Unexpected Finds Protocol, Incident Report

Source	ID	Aspect	Mitigation Strategy	Development Phase				Responsible Party				Timing/Frequency	Implementation Action	Compliance Record
				Early Works Construction	Main Works Construction	Operations and Maintenance	Decommissioning	Principal (LSbp)	EPC Contractor	Operations and Maintenance	Personnel Responsible ^{1,2,3,4,5}			
Other Heritage Matters														
SSD8895 Development Consent	HMP-10	Heritage (general)	Review and update this HMP in accordance with Schedule 4, Condition 2	✓	✓	-	✓	✓	✓	✓	1, 2, 3, 4	Annually, or when deemed necessary for the period of early works and then main works i.e. the total construction of the development	Refer to Section 8.0 of this HMP	Revised version of this HMP
Heritage Management Plan	HMP-33	Heritage (general)	All site personnel including employees, subcontractors and visitors will receive Aboriginal and historical cultural heritage awareness training during site inductions and toolbox talks. The training package will be developed in consultation with the registered Aboriginal parties.	✓	✓	✓	✓	-	✓	✓	2, 3, 5	Ongoing throughout pre-construction, construction, decommissioning and operation	Section 7.3 of the HMP	Induction sign-off sheet
Heritage Management Plan	HMP-34	Heritage (general)	Specifically, the Aboriginal and historical cultural heritage awareness training will cover: <ul style="list-style-type: none">Roles and responsibilities of personnel regarding protection of Aboriginal and historical cultural heritageThe location and types of heritage items found within the development area and surrounding areasThe means of identifying heritage itemsProcedures to be followed in the event that unexpected finds are discoveredProcedures to be followed in the event that suspected human skeletal remains are discovered.	✓	✓	✓	✓	-	✓	✓	2, 3	Ongoing throughout pre-construction, construction, decommissioning and operation	Section 7.3 of the HMP	Induction sign-off sheet
Heritage Management Plan	HMP-35	Heritage (general)	Records of all personnel undertaking the heritage awareness training will be maintained, including the content, date and name of trainer(s).	✓	✓	✓	✓	-	✓	✓	2, 3	Ongoing throughout pre-construction, construction, decommissioning and operation	Section 7.3 of the HMP	Induction sign-off sheet

¹ LSbp Development Principal

² Engineer, Procurement & Construction (EPC) Site Manager

³ EPC Health, Safety and Environment (HSE) Coordinator

⁴ Heritage Specialist

⁵ All Employees and Contractors

