

Impact Solar Farm

Lamar County, Texas

Affordable, locally generated, clean energy for Texas communities

The 260 megawatt Impact Solar Farm is expected to generate approximately 450,000 megawatt hours of solar power annually – or enough to power the equivalent of 41,000 US homes per year in the Texas market and provide an offset of more than 318,000 metric tons of greenhouse gas emissions each year, comparable to taking over 68,700 fuel-burning cars off the road.



260MW

Capacity



\$250M

Capital investment



41,000

Homes powered



318,000MT

Abated greenhouse
gas emissions



2020

Year end
completion date



320

Construction jobs,
84% local



A collaboration formed by shared goals

Providing a clean, renewable, reliable and economic source of electric power while maximizing local community benefits

In January 2021, Lightsource bp announced that our Impact Solar project had successfully completed construction and entered full grid-connected commercial operation. The majority of the energy generated by the 260MW project is contracted through a long-term agreement with bp.

Impact Solar is helping diversify the Texas energy mix and provide energy security. The solar project was utilized as a generation resource during extreme grid events due to winter storm Uri in February 2021, continuing to deliver Texans with much needed power during the crisis.

“

This project in Texas is a great example of how our joint venture with bp is furthering our shared mission to accelerate the implementation of solar.

”

Kevin Smith, Lightsource bp's CEO of the Americas

About us

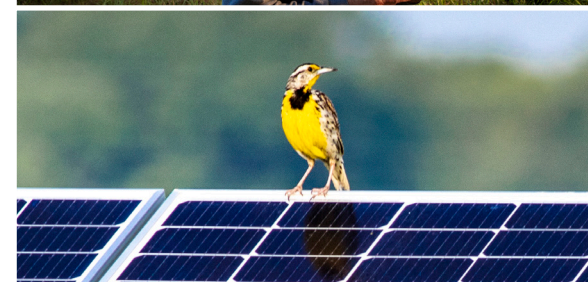
Lightsource bp is a global leader in the financing, development and management of large-scale solar energy projects. We are a 50:50 joint venture with bp and our purpose is to help drive the world's transition to low carbon energy through competitively priced and sustainable electricity. Lightsource bp is well-positioned to enact real change on the global energy landscape. Our ambition is to deliver 25 gigawatts of solar capacity by 2025.

We provide a full service to our customers from initial site selection and permitting through to long-term management of projects.

Lightsource bp in the US is headquartered in San Francisco with development offices in Denver, Philadelphia, Atlanta and Austin and has a development portfolio of more than 10 GW of solar projects across the United States.

Community benefits

Lightsource bp's model is to develop, own and operate our solar farms throughout their full lifecycle. With solar farms having a life span of up to 40 years, it's important to us that we're stewards of the land we use and long-term partners of local communities. We are focused on championing local economies and ecosystems, to truly become a home-grown asset that communities can be proud of.



Local economic development

Lightsource bp and project investors funded \$250 million into building clean energy infrastructure in Texas. In addition to providing low-cost clean, renewable energy for the community, the project created 320 jobs in construction, with 84% hired locally.

The project is also contributing tax revenue over the project life, benefitting the local Prairiland Independent School District.



Revenue for landowners

The project is on land leased by Lightsource bp from local landowners, providing families with a new source of reliable revenue for 25-30 years, and helping keep the land in the family for generations.



Customized environmental management plan

In collaboration with environmental experts, we develop long-term land management plans based on detailed ecological studies. These site-specific environmental plans avoid and minimize potential impacts during construction and operation, while improving soil health, fostering biodiversity, prioritizing local species and creating wildlife habitats wherever possible.



Community engagement

Lightsource bp is planning ongoing community outreach and community engagement, during project operations, including community open houses and site tours. The solar farm also provides educational opportunities for local schools and universities.



Clean, local energy

The project will provide an offset of 318,000 metric tons of greenhouse gas emissions each year, comparable to taking over 68,700 fuel-burning cars off the road.



Philanthropic commitments

Lightsource bp is committed to dedicating funds to philanthropic activities and charitable donations to local organizations.



Project details

Lightsource bp owns and operates the Impact Solar project. The solar farm is located 120 miles northeast of Dallas, on about 1,500 acres leased from local landowners.

Project capacity: 260 megawatts (DC) /
198 megawatts (AC)

Electricity production: 450,000 megawatt-hours
(year 1 generation)

Owner and operator: Lightsource bp

Capital investment: \$250 million by Lightsource bp
and project investors

Total size: More than 650,000 solar panels
installed on approximately 1,500
acres of land

Technology: Bifacial solar photovoltaic (PV)
modules on single-axis trackers

Commercial operation date: December 2020

Location: Lamar County, Texas, near
Cunningham in Prairiland ISD

