

Community Input



Yeewood Solar Farm, Devon



Newlands Solar Farm, Devon



'Solar Independence Day' at Dunsfold Park, Surrey

Thank You to all those who came along to our Community Information Evening and left feedback with us. Your input has been vital in ensuring that our proposals integrate with the activities and aspirations of the local community. In summary -

- We received a mix of responses to our initial proposals, with most residents stating the appropriate choice of site and the environmental benefits of renewable energy as their main reasons for support. We are still in regular dialogue with the local community to ensure they are kept up to date as the planning application progresses.
- During our discussions with residents in March, we were asked about the specific measures we would incorporate in order to enhance biodiversity and benefit wildlife. Since the Community Information Evening, we have used the results of ecological studies and the recommendations of consultant ecologists to refine our plans for managing the land around the solar farm.

Our final proposal includes bird and bat boxes, and new native hedgerow planting around the site boundaries, all of which aim to benefit the specific species found on-site. These enhancements form an integral part of the planning application and can be viewed in full online in the Planting Plan and Biodiversity Management Plan submitted with our application.

- We engaged with residents to discuss their concerns over views into the solar farm from properties to the north. As a result, we have incorporated improved hedgerow screening around the northern boundary of the site to mitigate these views as much as possible. Please see the centre fold illustration for more details.
- Finally, thank you to the local interest groups and businesses who got in touch and expressed an interest in getting involved in the project. If you have not yet left your business/group details with us and would like to be involved during and post construction, please contact our team.

What Happens Next?

A formal planning application has been submitted to Antrim and Newtonabbey Local Planning Office and has been validated with the following reference number:

LA03/2015/0021/F

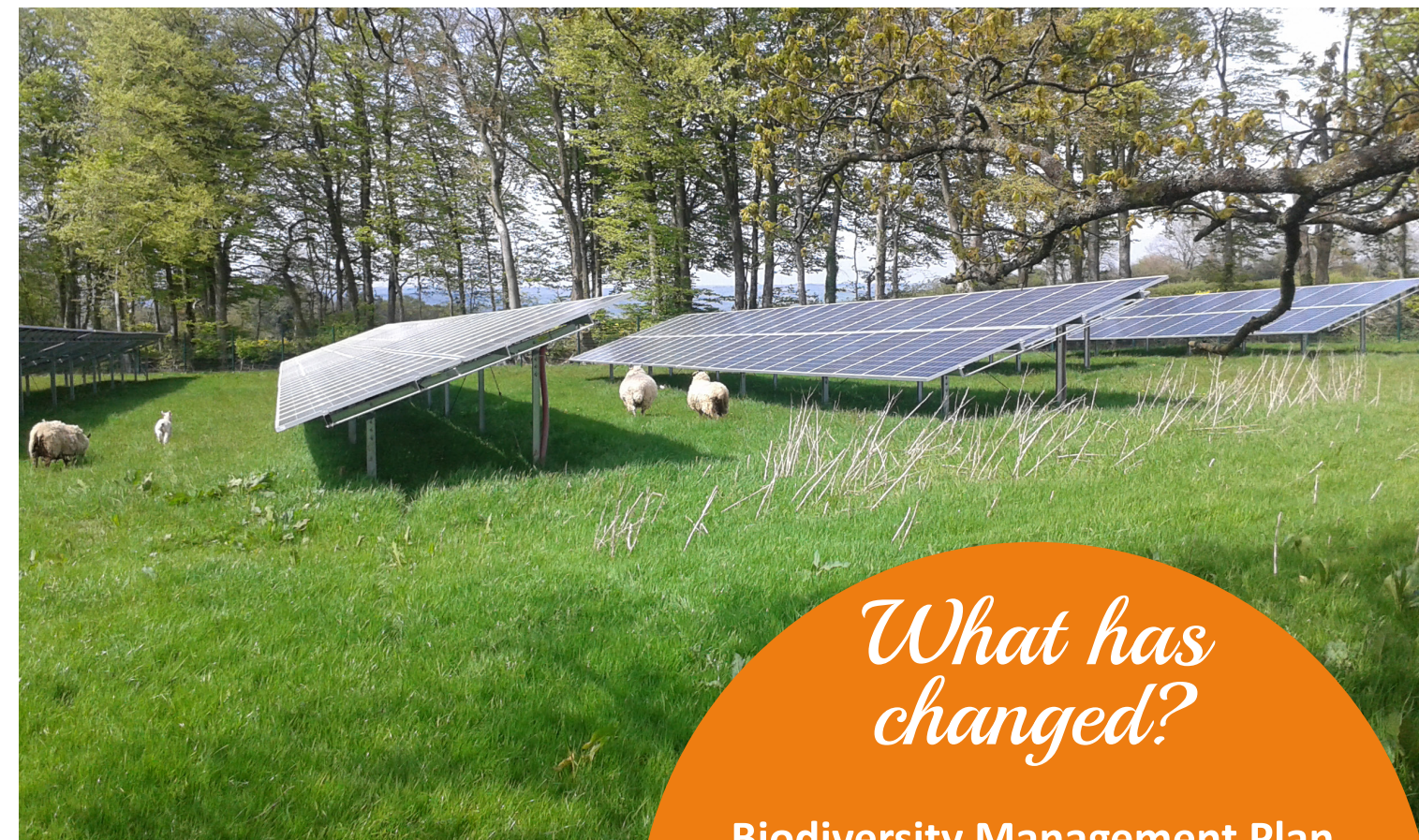
The application is currently open for public comments and is available to view and submit comments online.

If you have any further questions about the project, please do not hesitate to contact us using the details below.

Project Update, April 2015

PROPOSED SOLAR FARM south of MOIRA ROAD

Application Reference: LA03/2015/0021/F



What has changed?

Biodiversity Management Plan finalised - including wild flowers, new hedgerow planting and bird and bat boxes

Improved screening along northern boundary

As you may be aware, Lightsource Renewable Energy is working on a proposal for a solar farm on land at 'Land South of Moira Road, North of 20 Knockcairn Road', near Crumlin.

With the help of feedback from the community and the results of several site-based studies, we have now finalised our proposal and submitted a formal planning application to Antrim and Newtonabbey Local Planning Office. The application has now been validated and is available to view in full on the Northern Ireland Planning Portal Website by searching the following reference number: **LA03/2015/0021/F**

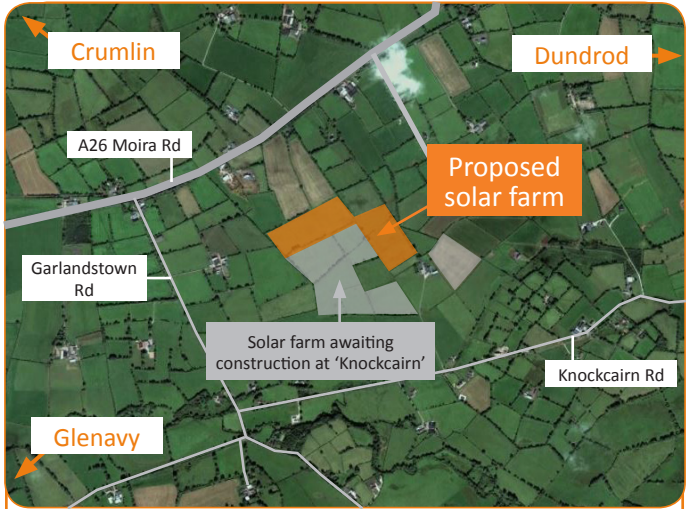
Little has changed with regards to the shape of the solar farm, but we hope this update will give a helpful insight into how the planting proposals and Biodiversity Management Plan have been refined to better screen the site from view and improve prospects for local wildlife. If you have any questions about the project or planning application, please don't hesitate to get in touch with our Planning Team directly using the details below.



Solar farms provide great opportunities for biodiversity enhancement

THE REVISED PROPOSAL:

Proposed solar farm at: ‘Land South of Moira Road, North of 20 Knockcairn Road’, near Crumlin



Solar Site Development
The land south of Moira Road will connect to the local electricity supply via the adjacent Lightsource solar farm at “Knockcairn”, which has received planning permission and is currently awaiting construction. The two solar farms will operate independently on different landholdings, but will share the connection point to the grid.

Hedgerow Planting
New native planting is proposed to create new boundary hedgerows and “gap up” existing vegetation (marked in orange and light green on the plan). The planting will improve natural screening and provide new habitats, food resources and better connectivity for wildlife. Proposed species include Hawthorn, Dogrose, Blackthorn and Guelder.



Sheep Grazing
The land inside the solar farm will continue its use as pasture land, with sheep grazing throughout the site.



Green Open Space
Field margins and wide gaps between the rows of panels leave the majority of the solar farm’s grasslands completely open and uncovered.



Bird Boxes
10 bird nest boxes are proposed in suitable trees around the site boundary to encourage nesting and roosting.

HOW MUCH ENERGY?

4.12 Megawatts Peak (MWp)

1,000 households powered

1,750 tonnes of carbon emissions saved, every year

...Equivalent to taking 391 large family cars off the road

The operation of the solar farm would be of no disturbance to farm animals, wildlife, walkers or motorists nearby. No flood lighting is needed, there are no moving parts, and as the solar panels are designed specifically to absorb daylight, an anti-reflective surface ensures any reflection of light is dull and minimal.



Species-Rich Grass
Species-rich grass will be sown throughout the site, including the areas oversailed by panels.



Hawthorn



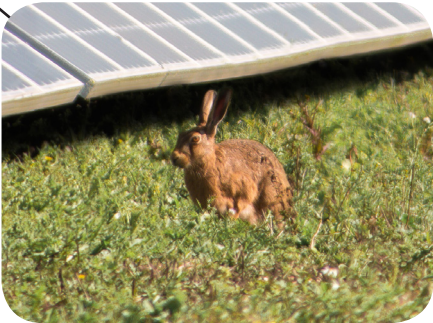
Dog Rose



Rural Fencing
A timber and wire agricultural fence of about 2 metres in height will be used, appropriate to the rural setting. The fence will sit inside the surrounding vegetation, within the current field pattern.



Bat Boxes
10 bat boxes are proposed in mature trees around the site to encourage roosting.



Mammal Gates
‘Mammal gates’ are proposed in the fencing to allow small mammals to move freely across the site undisturbed.