



# Community Input



Solar Farm at Yeewood, Somerset



Newlands Solar Farm, Devon

Visit our YouTube channel 'Lightsource Solar' to watch the video!



Open Day at Dunsfold Park Solar Farm, Surrey

**Thank You** to all those who came along to our Community Information Evening in April and left feedback with us. Your input has been vital in ensuring that our proposals integrate with the activities and aspirations of the local community. In summary -

- Overall, the local community has been supportive of our proposals. Comments included open days for children, net gain for the local environment and well-screened nature of the selected site as the main reasons for support. We are still in regular dialogue with local representatives to ensure they are kept up to date as the planning application progresses.
- As we received largely positive feedback, little has changed with regards to the layout or shape of the proposed solar farm since we last presented our plans.
- We have refined our plans for managing the land around the solar farm in response to the results of ecological studies and the recommendations of consultant ecologists. These plans are outlined in the Planting Plan and Biodiversity Management Plan submitted with the application. They include: installing bird and bat boxes, wild flower and wetland meadows, designated areas for bird seed sowing, log/stone piles aiming to harbour a range of habitats and creating mammal gates along the perimeter fence.
- New native hedgerow planting and maintenance of existing hedgerow, illustrated on the centrefold of this document, is proposed on south west field boundaries. This will not only contribute to the natural screening of the site but also enhance the local ecology and biodiversity.
- Once the solar farm is in place it will require very little maintenance, with only occasional visits in regular cars or 4x4s which will cause no traffic disruption.
- Finally, thank you to the local interest groups and businesses who got in touch and expressed an interest in getting involved in the project. If you have not yet left your business/group details with us and would like to be involved during and post construction, please contact our team.

## Community benefit

Lightsource believes that local communities hosting major renewable energy developments should be recognised for their contribution to meeting our country's need for secure, 'home-grown', cleaner forms of energy. As such, Lightsource is offering a community benefit which can be used to instigate and support local projects.

The Monaraha Solar Farm will provide a Community Benefit Fund of €750 per MW installed for 15-20 years. This will be approximately €14,250 per annum for community projects. Lightsource would welcome feedback from the general public and elected representatives on suitable projects which could benefit from the Community Benefit Fund.

## What happens next?

A formal planning application has been submitted to Tipperary County Council and has been validated with the following reference number: **16600565**

The application is currently within a 4 week 'public consultation phase' and is available to view and submit comments online using the following link: [www.eplanning.ie/TipperaryCC/AppFileRefDetails/16600565/0](http://www.eplanning.ie/TipperaryCC/AppFileRefDetails/16600565/0)

If you have any further questions, please do not hesitate to contact us.



Lightsource Renewable Energy Holdings Limited  
Suite 27, 20 Harcourt Street  
Dublin 2, Ireland

T: + 353 (0)1 685 6263  
E: [enquiries@lightsource-re.ie](mailto:enquiries@lightsource-re.ie)  
[www.lightsource-re.ie](http://www.lightsource-re.ie)

Project Update, July 2016

# PROPOSED SOLAR FARM at MONARAHA

Application Reference: **16600565**



## What's changed?

Biodiversity Management Plan finalised, including bird and bat boxes, wild flower and wetland meadows, wild bird seeded areas and mammal gates

Maintenance and planting of new native hedgerow improves screening from properties to the south and enhances the local ecology



Solar farms provide great opportunities for biodiversity enhancement

As you may be aware, Lightsource Renewable Energy is working on a proposal for a solar farm at Monaraha, east of Cahir Town. Lightsource is a company who already owns and operates a variety of solar farms and rooftop installations across the UK and responsible for the development of the first large-scale solar park on the island of Ireland. We work with local communities, businesses and landowners to generate green energy locally and sustainably.

We have now finalised our proposal and a formal planning application has been submitted to Tipperary County Council. The application has been validated and is available to view in full on the Council website by searching the following reference number: **16600565**

As we received largely positive feedback on our initial design, little has changed with regards to the layout or shape of the solar farm. But we hope this update will give a helpful overview of the finalised Planting Plan and Biodiversity Management Plan, and an insight into other ways the project has developed. If you have any questions, please don't hesitate to get in touch with our Planning Team directly.



Lightsource Renewable Energy Holdings Limited  
Suite 27, 20 Harcourt Street  
Dublin 2, Ireland

T: + 353 (0)1 685 6263  
E: [enquiries@lightsource-re.ie](mailto:enquiries@lightsource-re.ie)  
[www.lightsource-re.ie](http://www.lightsource-re.ie)



# The revised proposal:

Proposed solar farm at Monaraha, Cahir, County Tipperary

Lightsource worked closely with ecologists on a Biodiversity Management Plan which has been submitted as part of the planning application. The plan will ensure that the land is managed responsibly throughout the life of the solar farm; enhancing botanical biodiversity, improving prospects for wildlife whilst minimising disturbance, and allowing a continuation of agricultural practices on-site:

## Log and stone piles

Habitat piles are proposed in the north-west field near the pond to encourage insect communities and provide shelter and hunting grounds for small mammals, reptiles and amphibians.



## Wetland meadow

A fenced off wetland meadow is proposed on a section of the western boundary. The meadow will include an invertebrate bank and a diverse mix of species including cuckoo flower, water-mint and water cress, which would encourage habitats for a variety of wildlife including butterflies and moths.



## New hedgerow planting [—]

A new section of hedgerow is proposed on the south western corner of the site. This will provide better visual screening of the site from the surrounding area. Proposed species include hawthorn, blackthorn, holly and dog rose to diversify the mix of species and provide better connectivity, shelter and foraging resources for wildlife.

## Improved Screening [—]

An existing hedgerow along a section of the Ballymacadam West road will be managed to a height of 180cm to further screen the site from properties adjacent to the south and passing road users.



## Mammal gates

Sections of the fencing will be raised or will include 'access gates' to allow small mammals to move freely across the site.



## Wild flowers

Two separate wild flower meadows are proposed within the site boundaries. These meadows will be fenced off, un-grazed and include invertebrate banks to enhance habitats for birds, bees, beetles and other invertebrates.



## Bird and bat boxes

Bird nest boxes and bat roost boxes are proposed in suitable trees around the site boundary to encourage nesting and roosting.



Hawthorn



Hazel

## Hedgerows managed and improved

The majority of existing hedgerows in and around the site will be retained and managed long-term as part of the project. Gaps or poor sections will be in-filled with native planting, including Hawthorn, Blackthorn, Hazel and Alder to diversify the mix of species and provide better connectivity, shelter and foraging resources for wildlife.



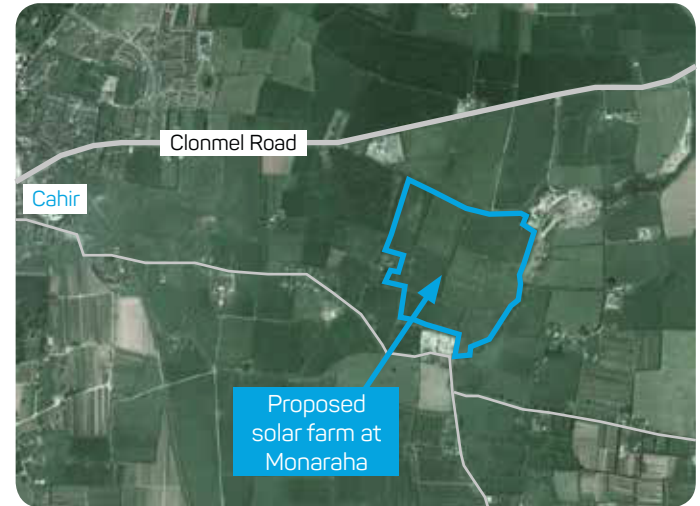
## Sheep grazing

The land inside the solar farm will continue an agricultural use as pasture land, with sheep grazing throughout the site.



Turtle Dove

## Proposed location:



## How much energy?

☀️ 19.1 Megawatts Peak (MWp)

🏠 4,950 households powered

🌿 8,410 tonnes of carbon emissions saved, every year

🚗 ...Equivalent to taking 1,850 large family cars off the road

## Wild bird seed mix [—]

Fenced off areas of the site peripheries will be sown with a wild bird seed mix to provide an additional food source for farmland birds and small mammals.