



Community Input



Solar Farm at Yeowood, Somerset



Visit our YouTube channel 'Lightsource Solar' to watch the video!

Newlands Solar Farm, Devon



Open Day at Dunsfold Park Solar Farm, Surrey

Thank You to all those who came along to our Community Information evening in December 2016 and provided us with feedback. Your input has been important in informing and refining our final plans for this development. In summary –

- Overall the local community have been supportive of our proposals, with reasons including the minimal impact to the environment, biodiversity gains, the need for clean renewable energy generation and the local preference for solar farms over other methods of energy generation such as wind turbines, as their main reasons for support.
- After listening to initial concerns regarding visual impact, we have made the following amends to the final layout of the solar farm: Omitting a number of fields along the eastern boundary on the northern site (approximately 38 acres), removing any potential views of the solar farm from neighbouring properties along the L6222. We have also reduced a 10 acre section along the south-western boundary and will use landscaped bunds in two locations along the southern boundary to minimise views from properties along the R156.
- Due to the requirements from grid operator Eirgrid, 2 cable end masts are required in the southern field adjacent to the R156. These masts are 16.2m tall and approximately 100m from the R156.
- We have refined our plans for managing the land around the solar farm in response to the results of ecological studies and the recommendations of consultant ecologists. These plans are outlined in the Planting Plan and Biodiversity Management Plan submitted with the application. They include: installing bird and bat boxes, sowing species-rich grassland, sowing wildflower meadows, sowing wild bird strips and installing habitats for insect communities, small mammals, reptiles and amphibians.
- New native hedgerow and tree planting, illustrated on the centrefold of this document, is proposed around sections of the site boundary. This will not only contribute to the natural screening of the site but also enhance the local ecology and biodiversity.
- The construction traffic route and how this could impact on local roads was also a concern from local residents. We have now finalised the construction route and our mitigating traffic impact proposals are detailed in the Construction, Decommissioning and Traffic Management Plan, which is available to view online as part of the planning application.
- Once the solar farm is in place it will require very little maintenance, with only occasional visits in regular cars or 4x4s which will cause no traffic disruption.

What happens next?

A formal planning application has been submitted to Meath County Council and has been validated with the following reference number: RA170873

The application is currently within the Council's 5 week 'public consultation phase' and is available to view and submit comments online. If you have any further questions, please do not hesitate to contact us.

Project Update, August 2017

PROPOSED SOLAR FARM ON LAND AT VESINGSTOWN & POLLEBAN

Application Reference: RA170873



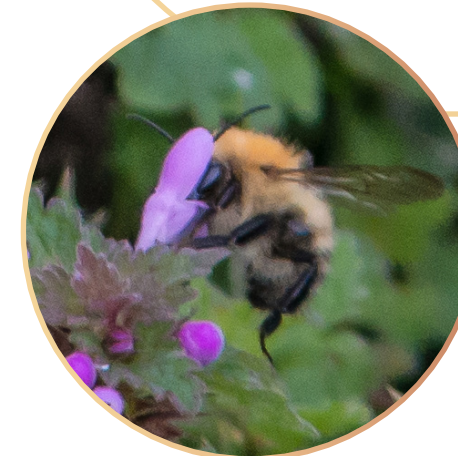
What's changed?

Changes to the layout of the solar farm based on community feedback and Eirgrid requirements

Traffic Management Plan finalised to reduce impact on local traffic during construction

Biodiversity Management Plan finalised, including wildflower meadows, habitat shelters, bird and bat boxes and species-rich grassland

New native hedgerow, tree planting and bunding banks to improve screening from the surrounding area



Solar farms provide great opportunities for biodiversity enhancement

As you may be aware, Lightsource Renewable Energy is working on a proposal for a solar farm on land approximately 1.6km south east of Batterstown, Co. Meath. Lightsource develops and operates solar farms and rooftop installations in Britain and Ireland, working with local communities, businesses and landowners to generate green energy locally and sustainably.

We have now finalised our proposal and a formal planning application has been submitted to Meath County Council. The application has been validated and is available to view in full on the Council website by searching the following reference number: **RA170873**





After listening to concerns from the local community regarding visual impact, we have altered the layout of the solar farm, reducing the acreage of solar panels by 47 acres. Changes were also required following feedback from Eirgrid in March 2017 on the grid connection. We hope this update will give a helpful overview of the finalised design and the proposed planting and habitat enhancements that are integral to the scheme. If you have any questions, please don't hesitate to get in touch.

The revised proposal:

Proposed solar farm on Land at Vasingstown & Polleban, Co. Meath

Lightsource worked closely with ecologists on a Biodiversity Management Plan which has been submitted as part of the planning application. The plan will ensure that the land is managed responsibly throughout the life of the solar farm; enhancing botanical biodiversity, improving prospects for wildlife whilst minimising disturbance, and allowing a continuation of agricultural practices on-site:

How much energy?

-  **55MW MEC**
Maximum Export Capacity
-  **18,136 households powered**
-  **30,950 tonnes of carbon emissions saved, every year**
-  **...Equivalent to taking 6,876 large family cars off the road**



Hawthorn

Hedgerows Managed and Improved

The majority of hedgerows in and around the site will be retained and managed long-term as part of the project. Gaps or poor sections will be in-filled with native planting, including Hawthorn, Blackthorn, Hazel and Dog Rose, to diversify the mix of species and provide better connectivity, shelter and foraging resources for wildlife.

Panels Removed

In response to the local community, approximately 10 acres have been omitted along the south western boundary to minimise views from properties 300m south along the R156.



L2215

Goat Willow

New Hedgerow and Tree Planting (—)

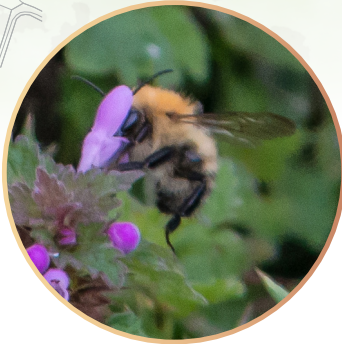
New hedgerow with tree planting along dedicated sections of the site boundary is proposed. This will comprise of Alder, Sessil Oak, Goats Willow and Whitebeam. The new planting will help to screen the site from the nearby roads and residential properties.



Species-rich grass

Species-rich grass will be sown throughout the site, including the areas oversailed by panels.

Substation



Cable Masts

Due to the requirements of grid operator and developer Eirgrid, two 16.2m tall cable end masts are required in the southern field 100m from the R156.

Bunding Banks (—)

Small mounds of approx 1-1.5m high are to be installed and planted up with a mix of hedging and trees to help screen inward views from the southwest.



R154

Habitat Creation

Beetle banks, a bee bank and hibernaculum are proposed around the site boundaries to encourage habitats for insect communities, small mammals, reptiles and amphibians.

Two dedicated zones for wild bird seed mix provides a rich habitat, providing a further food source for farmland birds and small mammals.



Bird and bat boxes

Bird nest boxes and bat roost boxes are proposed in suitable trees around the site boundary to encourage nesting and roosting.



Low height

The panels would reach a maximum height of 2.5 metres so would be rarely glimpsed beyond the site's surrounding hedgerows and trees.

Panels Removed

In response to feedback from the local community, we have omitted a number of fields adjacent to the L6222 (approximately 38 acres) from the previous layout. This has removed any potential views from residential properties along the L6222.

Construction Route Established

A one-way construction route has been established as well as other specific mitigation measures to minimise the impact of the construction traffic on the environment and local communities. Vehicles will access the site via the R156 onto the L6222 and exit the site by turning left onto the L6222 towards the R154. More details can be found in the Construction, Decommissioning and Traffic Management Plan published on the council website.

